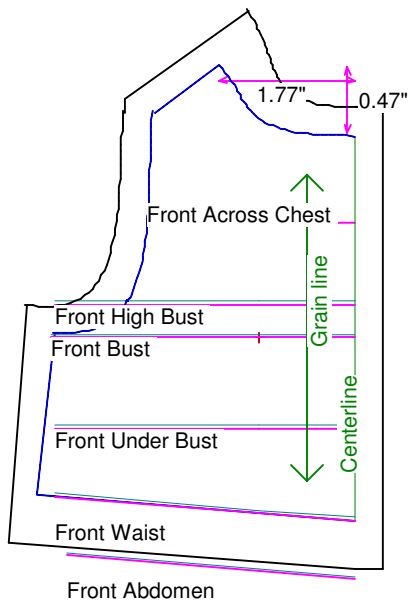


|   |         |  |                   |
|---|---------|--|-------------------|
| <b>Neck Circumference</b>               | 3 1/4   | <b>Shoulder Length</b>                 | 7/16              |
| <b>Shoulder Slope Front</b>             | 2 3/8   | <b>Shoulder Slope Back</b>             | 2 1/4             |
| <b>Across Shoulder Front</b>            | 2 1/8   | <b>Across Shoulder Back</b>            | 2 1/8             |
| <b>Across Chest</b>                     | 2 3/16  | <b>Across Back</b>                     | 1 15/16           |
| <b>Full Length Front</b>                | 2 3/8   | <b>Full Length Back</b>                | 2 1/4             |
| <b>Center Length Front</b>              | 2       | <b>Center Length Back</b>              | 1 7/8             |
| <b>Bust Front</b>                       | 3 1/16  | <b>Bust Back</b>                       | 2 11/16           |
| <b>Bust Depth</b>                       | 1 5/16  | <b>High Bust</b>                       | 3 1/8             |
| <b>Bust Radius</b>                      | 1/16    | <b>Under Bust Front</b>                | 3 1/8             |
| <b>Bust Span</b>                        | 1       | <b>Side Length</b>                     | 1                 |
| <b>Waist Front</b>                      | 3 1/8   | <b>Waist Back</b>                      | 2 1/2             |
| <b>High Waist Front</b>                 | 3 1/8   | <b>High Waist Back</b>                 | 2 1/2             |
| <b>High Waist Offset</b>                | 5/16    | <b>Body Depth</b>                      | 1 5/8             |
| <b>Dress Waist Offset</b>               | 0       | <b>Dart Center Offset</b>              | 0                 |
| <b>Armhole Depth</b>                    | 1       | <b>Overarm Length</b>                  | 3 1/4             |
| <b>Bicep</b>                            | 2 1/4   | <b>Elbow Bent</b>                      | 2 3/16            |
| <b>Wrist</b>                            | 1 3/4   | <b>Around Hand</b>                     | 2 1/2             |
| <b>Abdomen Depth</b>                    | 5/16    | <b>Elbow Depth</b>                     | 2                 |
| <b>Abdomen Front</b>                    | 3       | <b>Abdomen Back</b>                    | 2 3/4             |
| <b>Hip Front</b>                        | 3       | <b>Hip Back</b>                        | 3 1/2             |
| <b>Crotch Length Front</b>              | 2 1/2   | <b>Crotch Length Back</b>              | 2 1/4             |
| <b>Inseam</b>                           | 3 3/8   | <b>Floor to Waist Side</b>             | 5 9/16            |
| <b>Floor to Waist Front (conformed)</b> | 5 7/16  | <b>Floor to Waist Back (conformed)</b> | 5 5/8             |
| <b>Floor to Waist Front (straight)</b>  | 5 7/16  | <b>Floor to Waist Back (straight)</b>  | 5 5/8             |
| <b>Floor to Hip</b>                     | 4 13/16 | <b>Floor to Knee</b>                   | 2 5/16            |
| <b>Floor to Ankle</b>                   | 5/8     | <b>Knee Straight</b>                   | 2 7/8             |
| <b>Upper Thigh</b>                      | 3 1/2   | <b>Mid Thigh</b>                       | 3 1/4             |
| <b>Calf</b>                             | 2 7/8   | <b>Ankle</b>                           | 2 1/4             |
| <b>Ankle/Heel</b>                       | 2 7/8   | <b>Height</b>                          | 10                |
| <b>Around Head</b>                      | 7       | <b>Last saved on:</b>                  | August 11 of 2006 |



## Bodice Sloper, Front Right

**NOTE: Cut 2 fronts and leave front opening unstitched to be pinned closed.**

Custom designed using the Anne Estelle 10 inch measurement set

Total fabric width = 3"

Total fabric height = 4"

Total paper height needed to print = 4"

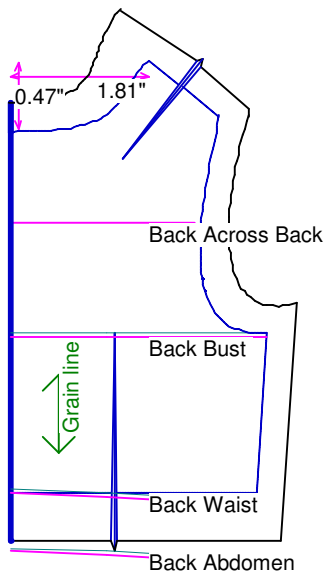
Neckline: jewel

Scale = 100%

Using Doll Shop Deluxe

build 5.31 © 2005/2006 My Pattern Designer, LLC.

Friday - August 11, 2006 8:18:50



## Bodice Sloper, Back Right

Custom designed using the Anne Estelle 10 inch measurement set

Total fabric width = 2"

Total fabric height = 4"

Total paper height needed to print = 4"

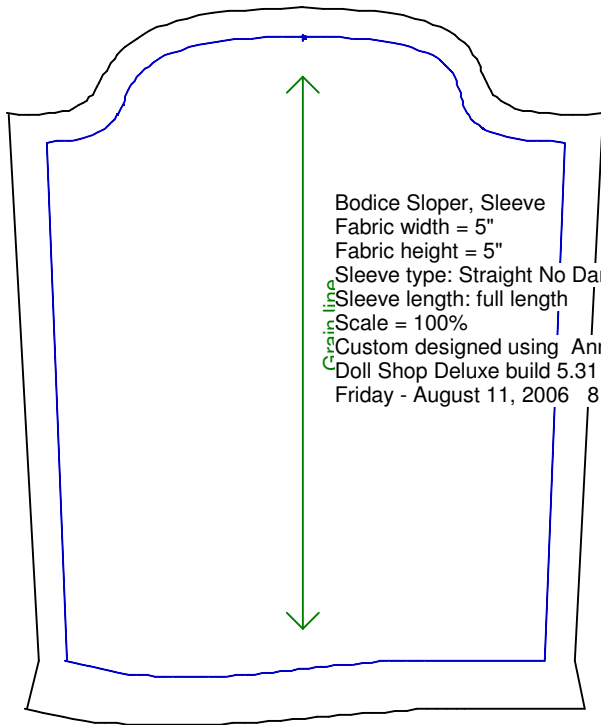
Neckline: jewel

Scale = 100%

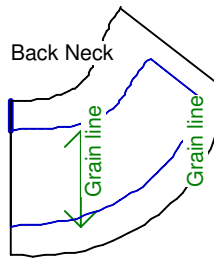
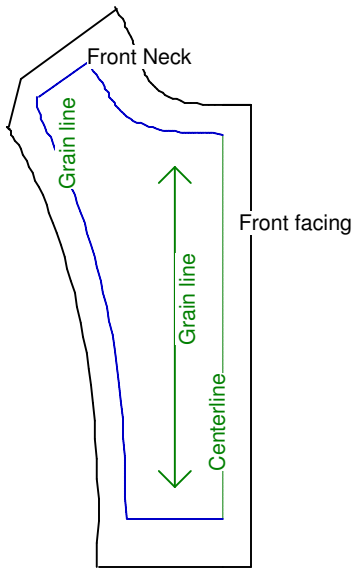
Using Doll Shop Deluxe

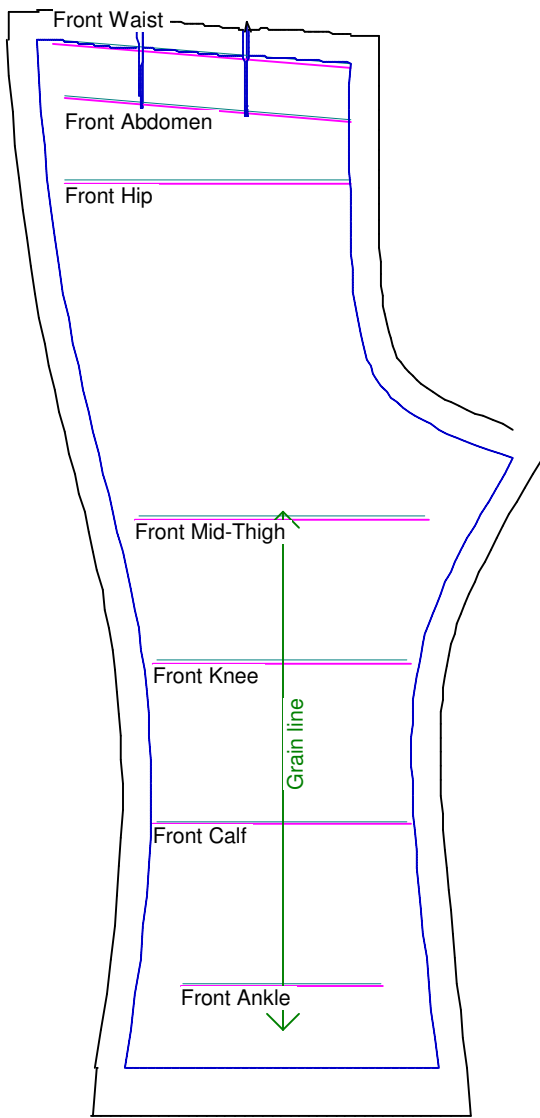
build 5.31 © 2005/2006 My Pattern Designer, LLC.

Friday - August 11, 2006 8:18:50



Bodice Sloper, Sleeve  
Fabric width = 5"  
Fabric height = 5"  
Sleeve type: Straight No Dart  
Sleeve length: full length  
Scale = 100%  
Custom designed using Anne Estelle 10 inch  
Doll Shop Deluxe build 5.31 © 2005/2006 My Pattern Designer, LLC.  
Friday - August 11, 2006 8:18:50





## Pants Sloper, Front Right

Custom designed using the Anne Estelle 10 inch measurement set

Full length

Total fabric width = 4"

Total fabric height = 8"

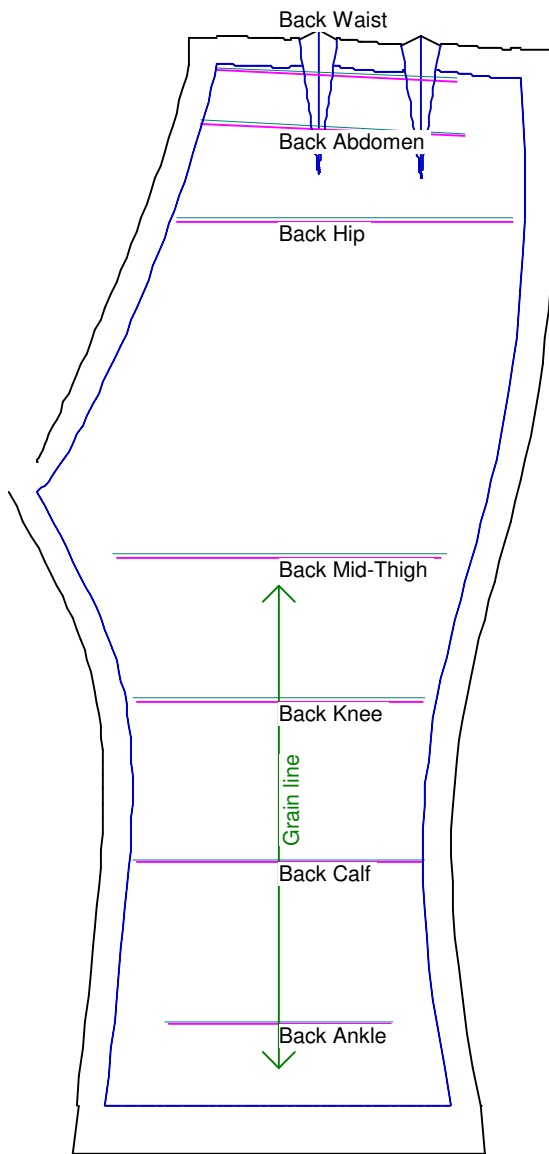
Total paper height needed to print = 8"

Scale = 100%

Using Doll Shop Deluxe

build 5.31 © 2005/2006 My Pattern Designer, LLC.

Friday - August 11, 2006 8:18:50



## Pants Sloper, Back Right

Custom designed using the Anne Estelle 10 inch measurement set

Full length

Total fabric width = 4"

Total fabric height = 8"

Total paper height needed to print = 8"

Scale = 100%

Using Doll Shop Deluxe

build 5.31 © 2005/2006 My Pattern Designer, LLC.

Friday - August 11, 2006 8:18:50

Waistband  
Cut each on fold

