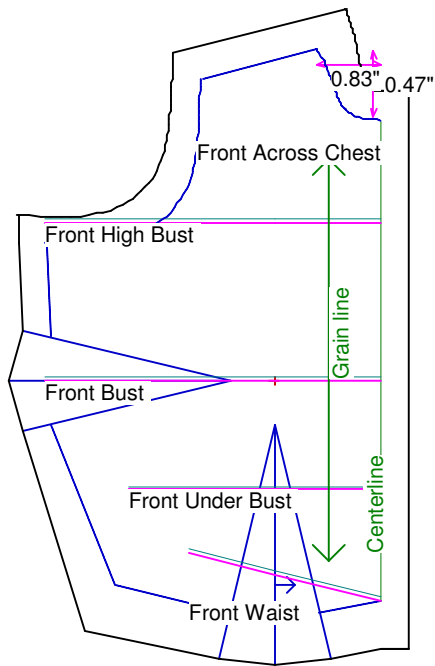


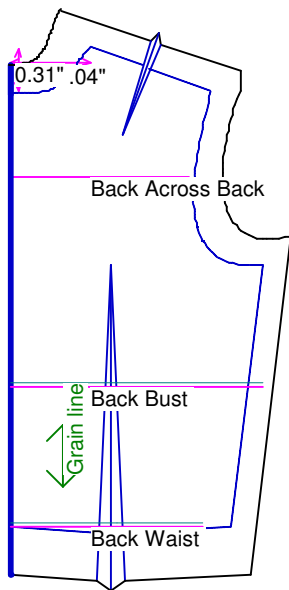
Neck Circumference	1 7/8	Shoulder Length	5/8
Shoulder Slope Front	2 7/8	Shoulder Slope Back	2 1/2
Across Shoulder Front	1 7/8	Across Shoulder Back	2
Across Chest	1 15/16	Across Back	1 7/8
Full Length Front	2 7/8	Full Length Back	2 1/2
Center Length Front	2 1/2	Center Length Back	2 1/4
Bust Front	3 1/2	Bust Back	2 5/8
Bust Depth	1 5/8	High Bust	3 1/2
Bust Radius	1	Under Bust Front	2 5/8
Bust Span	1 1/8	Side Length	1 1/2
Waist Front	2	Waist Back	2
High Waist Front	2	High Waist Back	2
High Waist Offset	1/2	Body Depth	1 7/16
Dress Waist Offset	0	Dart Center Offset	0
Armhole Depth	3/4	Overarm Length	3 3/4
Bicep	1 5/8	Elbow Bent	1 3/8
Wrist	1	Around Hand	1 1/4
Abdomen Depth	1/2	Elbow Depth	2 1/8
Abdomen Front	2 3/4	Abdomen Back	2 7/8
Hip Front	2 7/8	Hip Back	2 7/8
Crotch Length Front	1 5/8	Crotch Length Back	1 3/4
Inseam	5 3/8	Floor to Waist Side	6 3/4
Floor to Waist Front (conformed)	6 1/2	Floor to Waist Back (conformed)	6 3/4
Floor to Waist Front (straight)	6 1/2	Floor to Waist Back (straight)	6 3/4
Floor to Hip	6	Floor to Knee	3
Floor to Ankle	3/8	Knee Straight	2
Upper Thigh	3	Mid Thigh	2 5/8
Calf	2	Ankle	1 1/8
Ankle/Heel	1 1/2	Height	11 1/2
Around Head	4 1/2	Last saved on:	August 11 of 2006



Bodice Sloper, Front Right

NOTE: Cut 2 fronts and leave front opening unstitched to be pinned closed.
 Custom designed using the 11.5 inch Fashion Doll measurement set

Total fabric width = 3"
 Total fabric height = 5"
 Total paper height needed to print = 5"
 Neckline: jewel
 Scale = 100%
 Using Doll Shop Deluxe
 build 5.31 © 2005/2006 My Pattern Designer, LLC.
 Friday - August 11, 2006 8:05:48



Bodice Sloper, Back Right

Custom designed using the 11.5 inch Fashion Doll measurement set

Total fabric width = 2"

Total fabric height = 4"

Total paper height needed to print = 4"

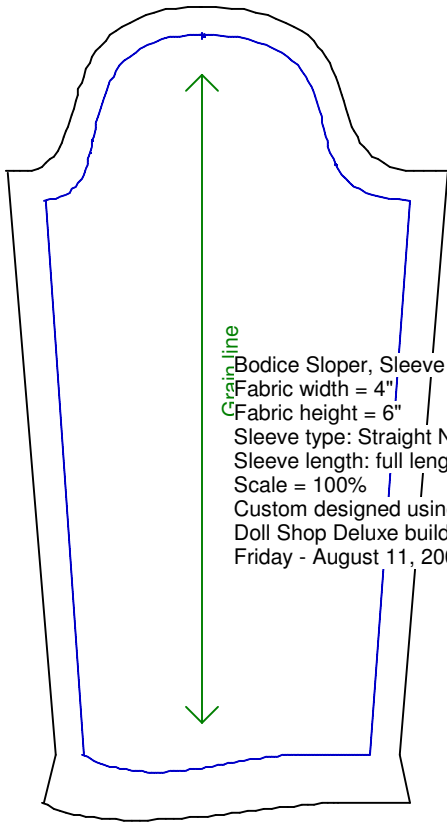
Neckline: jewel

Scale = 100%

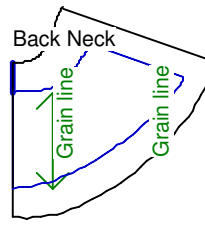
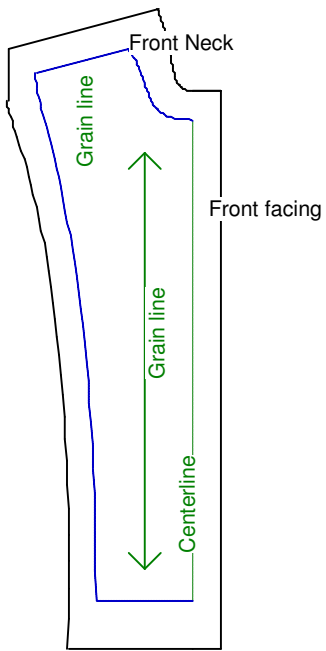
Using Doll Shop Deluxe

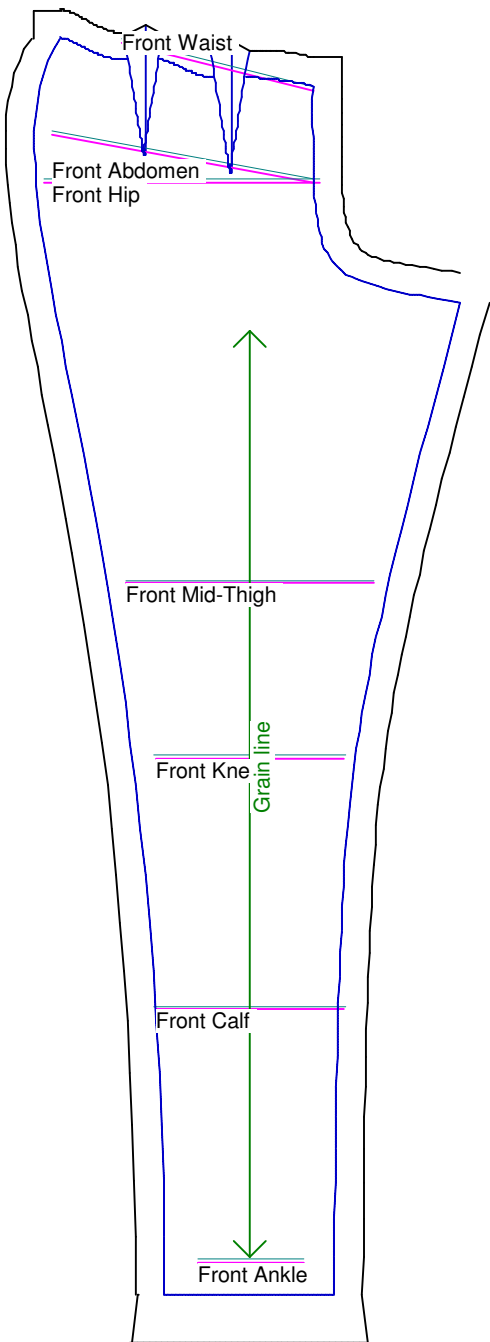
build 5.31 © 2005/2006 My Pattern Designer, LLC.

Friday - August 11, 2006 8:05:48



Bodice Sloper, Sleeve
Fabric width = 4"
Fabric height = 6"
Sleeve type: Straight No Dart
Sleeve length: full length
Scale = 100%
Custom designed using 11.5 inch Fashion Doll
Doll Shop Deluxe build 5.31 © 2005/2006 My Pattern Designer, LLC.
Friday - August 11, 2006 8:05:48





Pants Sloper, Front Right

Custom designed using the 11.5 inch Fashion Doll measurement set

Full length

Total fabric width = 4"

Total fabric height = 9"

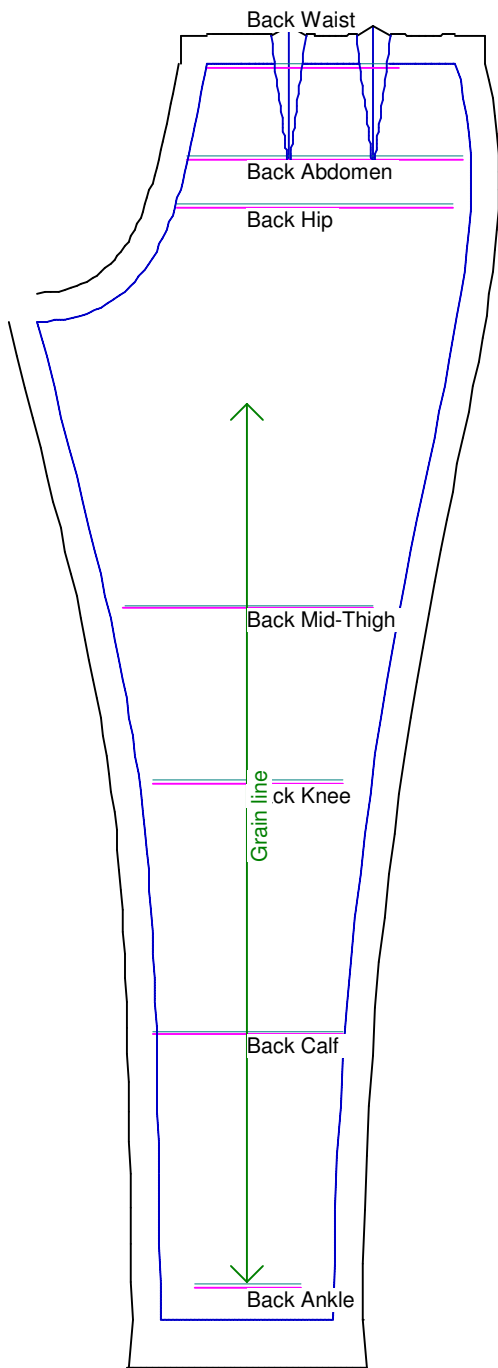
Total paper height needed to print = 9"

Scale = 100%

Using Doll Shop Deluxe

build 5.31 © 2005/2006 My Pattern Designer, LLC.

Friday - August 11, 2006 8:05:48



Pants Sloper, Back Right

Custom designed using the 11.5 inch Fashion Doll measurement set
Full length
Total fabric width = 4"
Total fabric height = 9"
Total paper height needed to print = 9"
Scale = 100%
Using Doll Shop Deluxe
build 5.31 © 2005/2006 My Pattern Designer, LLC.
Friday - August 11, 2006 8:05:48

Waistband
Cut each on fold

