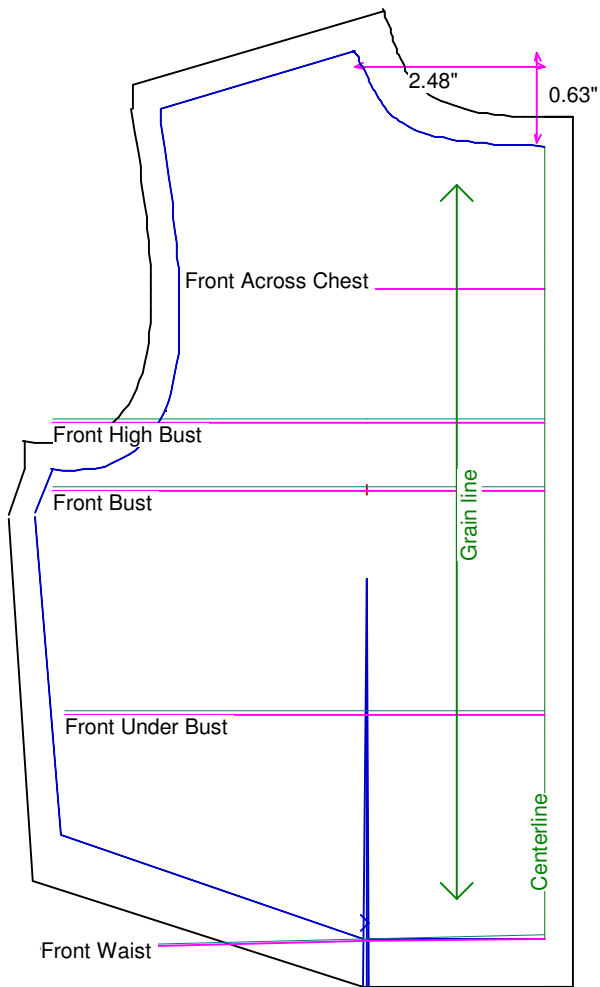


Neck Circumference	4 7/8	Shoulder Length	1 1/16
Shoulder Slope Front	4 3/4	Shoulder Slope Back	4 3/4
Across Shoulder Front	4	Across Shoulder Back	4 3/16
Across Chest	3 3/4	Across Back	3 3/4
Full Length Front	4 5/8	Full Length Back	4 1/2
Center Length Front	4 1/8	Center Length Back	4 1/4
Bust Front	5 1/8	Bust Back	5
Bust Depth	2 1/4	High Bust	5 1/8
Bust Radius	1/16	Under Bust Front	5
Bust Span	1 7/8	Side Length	2 1/8
Waist Front	5 1/4	Waist Back	4
High Waist Front	5 1/4	High Waist Back	4
High Waist Offset	1/2	Body Depth	2 3/16
Dress Waist Offset	0	Dart Center Offset	0
Armhole Depth	1 5/8	Overarm Length	5 3/4
Bicep	3 1/2	Elbow Bent	3 3/8
Wrist	2 9/16	Around Hand	3 3/8
Abdomen Depth	1/2	Elbow Depth	3
Abdomen Front	5 1/8	Abdomen Back	4 1/2
Hip Front	5	Hip Back	5 1/4
Crotch Length Front	3 3/4	Crotch Length Back	3 3/4
Inseam	7 1/4	Floor to Waist Side	10 1/4
Floor to Waist Front (conformed)	10 5/16	Floor to Waist Back (conformed)	10 3/8
Floor to Waist Front (straight)	10 5/16	Floor to Waist Back (straight)	10 3/8
Floor to Hip	8 3/4	Floor to Knee	4 5/8
Floor to Ankle	1	Knee Straight	4 1/4
Upper Thigh	5 3/4	Mid Thigh	5 1/2
Calf	4 5/8	Ankle	3 1/4
Ankle/Heel	4 1/4	Height	18
Around Head	10 1/2	Last saved on:	August 11 of 2006



Bodice Sloper, Front Right

NOTE: Cut 2 fronts and leave front opening unstitched to be pinned closed.

Custom designed using the Anne Estelle 18inch _JCP measurement set

Total fabric width = 4"

Total fabric height = 7"

Total paper height needed to print = 7"

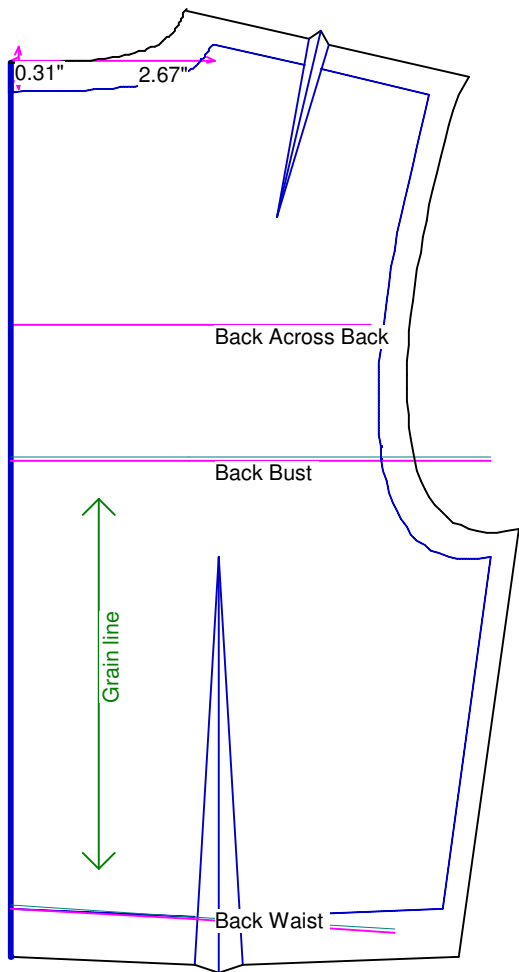
Neckline: jewel

Scale = 100%

Using Doll Shop Deluxe

build 5.31 © 2005/2006 My Pattern Designer, LLC.

Friday - August 11, 2006 8:22:30



Bodice Sloper, Back Right

Custom designed using the Anne Estelle 18inch JCP measurement set

Total fabric width = 4"

Total fabric height = 7"

Total paper height needed to print = 7"

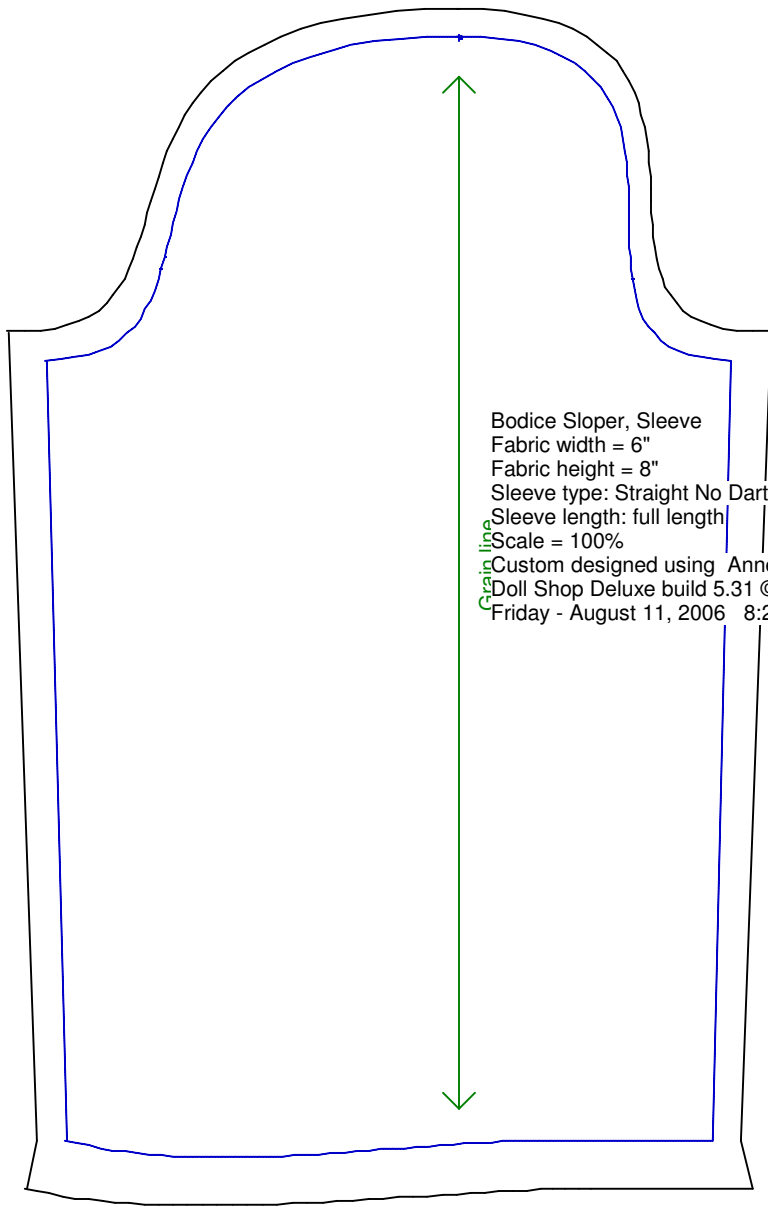
Neckline: jewel

Scale = 100%

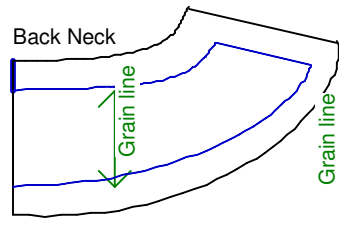
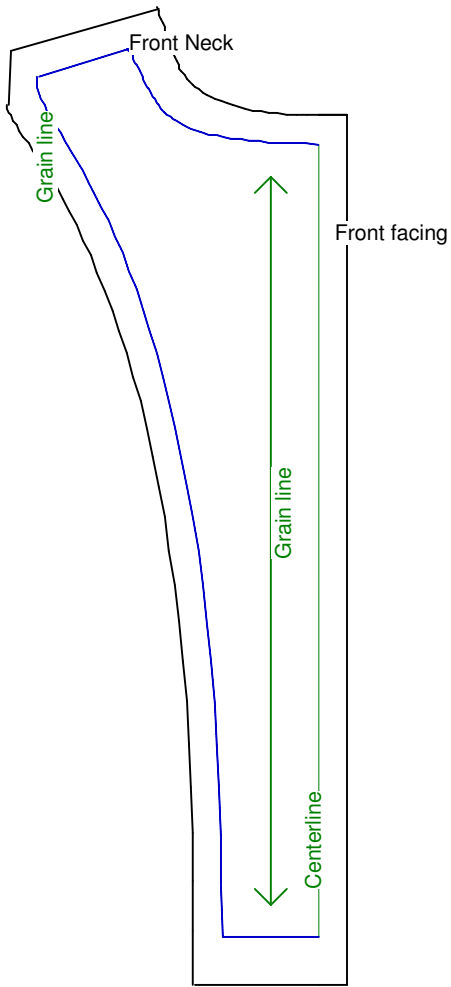
Using Doll Shop Deluxe

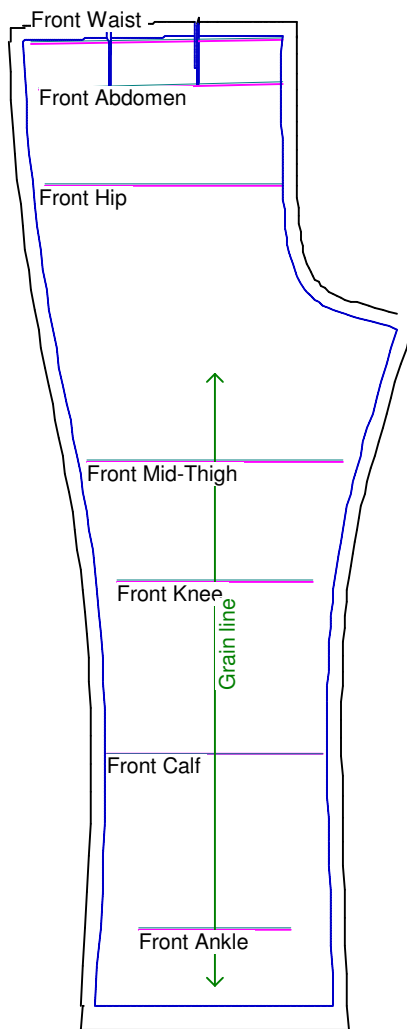
build 5.31 © 2005/2006 My Pattern Designer, LLC.

Friday - August 11, 2006 8:22:30



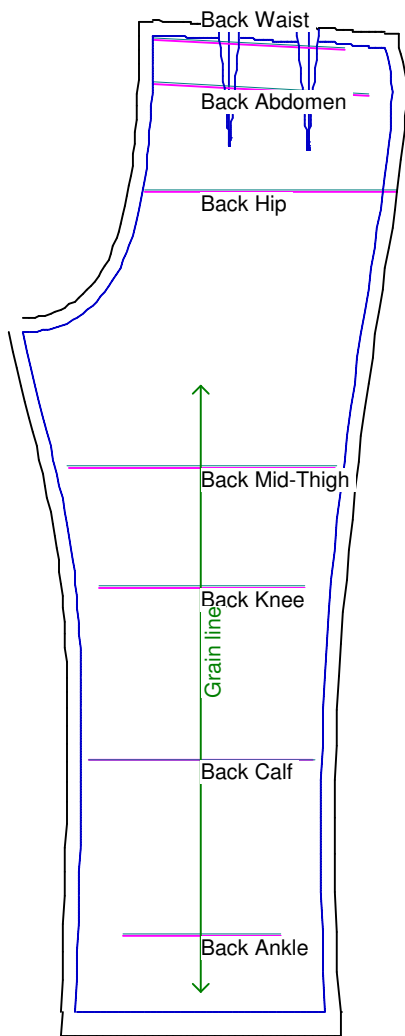
Bodice Sloper, Sleeve
Fabric width = 6"
Fabric height = 8"
Sleeve type: Straight No Dart
Sleeve length: full length
Scale = 100%
Custom designed using Anne Estelle 18inch _JCP
Doll Shop Deluxe build 5.31 © 2005/2006 My Pattern Designer, LLC.
Friday - August 11, 2006 8:22:30





Pants Sloper, Front Right

Custom designed using the Anne Estelle 18inch .JCP measurement set
Full length
Total fabric width = 6"
Total fabric height = 14"
Total paper height needed to print = 14"
Scale = 50%
Using Doll Shop Deluxe
build 5.31 © 2005/2006 My Pattern Designer, LLC.
Friday - August 11, 2006 8:22:30



Pants Sloper, Back Right

Custom designed using the Anne Estelle 18inch JCP measurement set
Full length

Total fabric width = 6"

Total fabric height = 14"

Total paper height needed to print = 14"

Scale = 50%

Using Doll Shop Deluxe

build 5.31 © 2005/2006 My Pattern Designer, LLC.

Friday - August 11, 2006 8:22:30

Waistband
Cut each on fold

