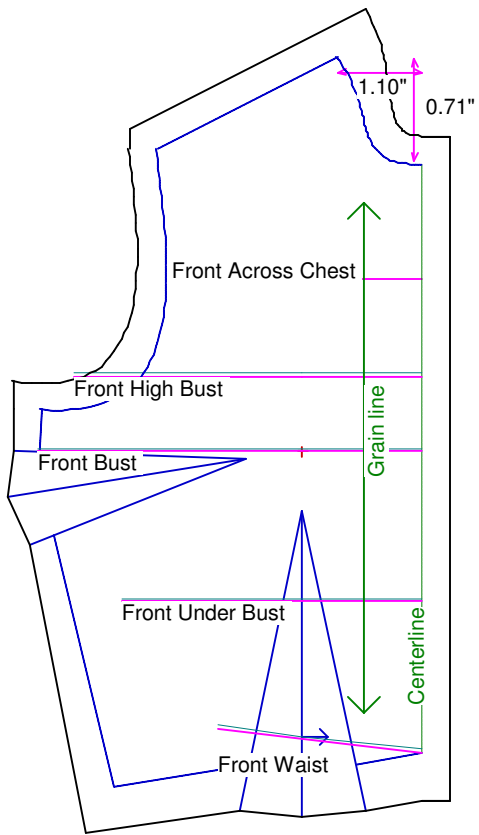


<b>Neck Circumference</b>	2 5/16	<b>Shoulder Length</b>	1 1/16
<b>Shoulder Slope Front</b>	3 7/16	<b>Shoulder Slope Back</b>	2 15/16
<b>Across Shoulder Front</b>	2 3/4	<b>Across Shoulder Back</b>	2 7/8
<b>Across Chest</b>	2 5/8	<b>Across Back</b>	2 5/8
<b>Full Length Front</b>	3 5/8	<b>Full Length Back</b>	3 1/8
<b>Center Length Front</b>	3 1/16	<b>Center Length Back</b>	2 15/16
<b>Bust Front</b>	4	<b>Bust Back</b>	3
<b>Bust Depth</b>	1 3/4	<b>High Bust</b>	3 5/8
<b>Bust Radius</b>	5/8	<b>Under Bust Front</b>	3 1/8
<b>Bust Span</b>	1 1/4	<b>Side Length</b>	1 3/4
<b>Waist Front</b>	2 1/8	<b>Waist Back</b>	1 11/16
<b>High Waist Front</b>	2 1/8	<b>High Waist Back</b>	1 11/16
<b>High Waist Offset</b>	7/16	<b>Body Depth</b>	2 1/8
<b>Dress Waist Offset</b>	0	<b>Dart Center Offset</b>	0
<b>Armhole Depth</b>	1 3/16	<b>Overarm Length</b>	4 3/4
<b>Bicep</b>	2	<b>Elbow Bent</b>	1 3/4
<b>Wrist</b>	1 3/16	<b>Around Hand</b>	1 7/8
<b>Abdomen Depth</b>	7/16	<b>Elbow Depth</b>	2 7/8
<b>Abdomen Front</b>	2 9/16	<b>Abdomen Back</b>	2 1/2
<b>Hip Front</b>	3 1/8	<b>Hip Back</b>	3 1/2
<b>Crotch Length Front</b>	2 3/4	<b>Crotch Length Back</b>	2 15/16
<b>Inseam</b>	6 7/8	<b>Floor to Waist Side</b>	9 1/2
<b>Floor to Waist Front (conformed)</b>	9 3/8	<b>Floor to Waist Back (conformed)</b>	9 7/16
<b>Floor to Waist Front (straight)</b>	9 3/8	<b>Floor to Waist Back (straight)</b>	9 7/16
<b>Floor to Hip</b>	8	<b>Floor to Knee</b>	4
<b>Floor to Ankle</b>	1	<b>Knee Straight</b>	2 3/8
<b>Upper Thigh</b>	3 5/8	<b>Mid Thigh</b>	3 3/8
<b>Calf</b>	2 3/4	<b>Ankle</b>	1 5/8
<b>Ankle/Heel</b>	2 5/16	<b>Height</b>	15 1/2
<b>Around Head</b>	5 3/4	<b>Last saved on:</b>	August 11 of 2006



## Bodice Sloper, Front Right

**NOTE:** Cut 2 fronts and leave front opening unstitched to be pinned closed.

Custom designed using the Gene measurement set

Total fabric width = 3"

Total fabric height = 6"

Total paper height needed to print = 6"

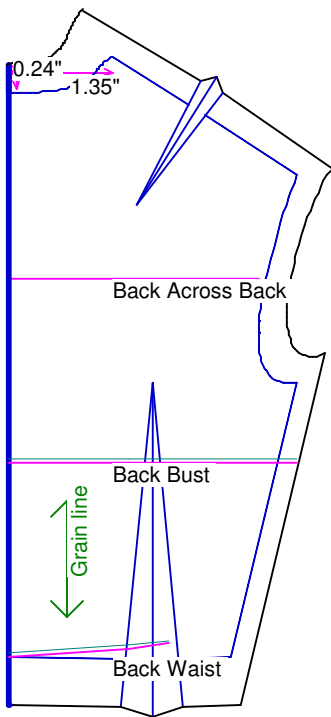
Neckline: jewel

Scale = 100%

Using Doll Shop Deluxe

build 5.31 © 2005/2006 My Pattern Designer, LLC.

Friday - August 11, 2006 8:43:33



## Bodice Sloper, Back Right

Custom designed using the Gene measurement set

Total fabric width = 3"

Total fabric height = 5"

Total paper height needed to print = 5"

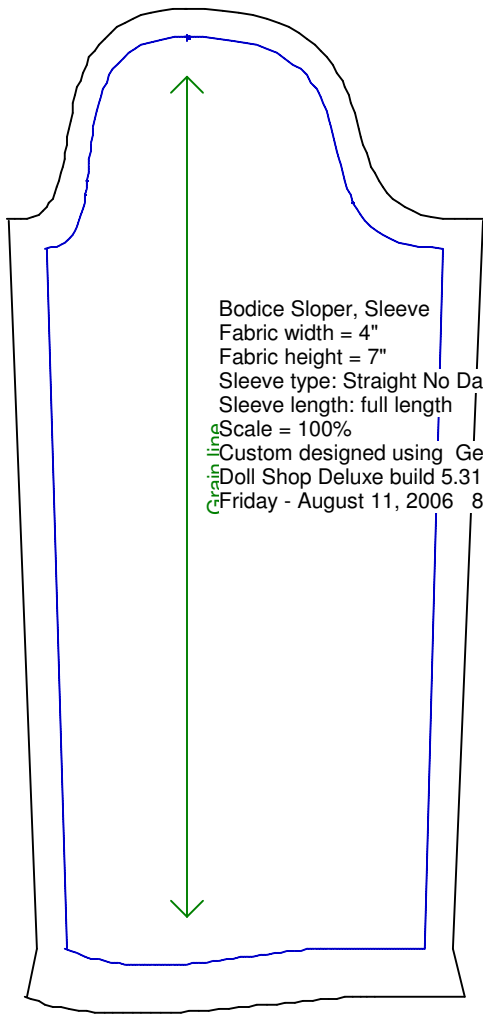
Neckline: jewel

Scale = 100%

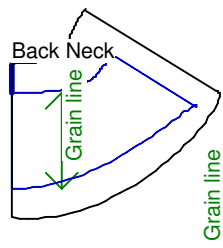
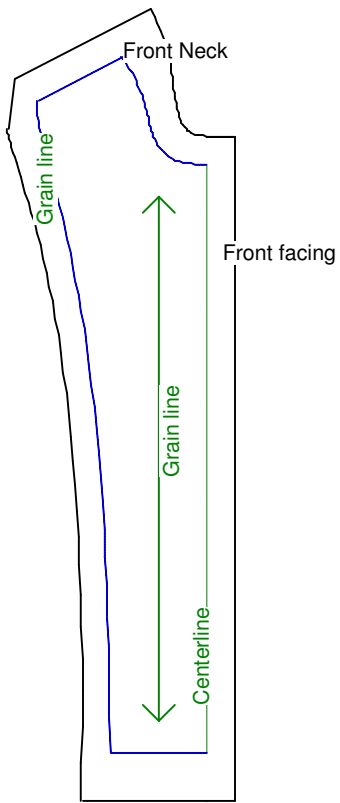
Using Doll Shop Deluxe

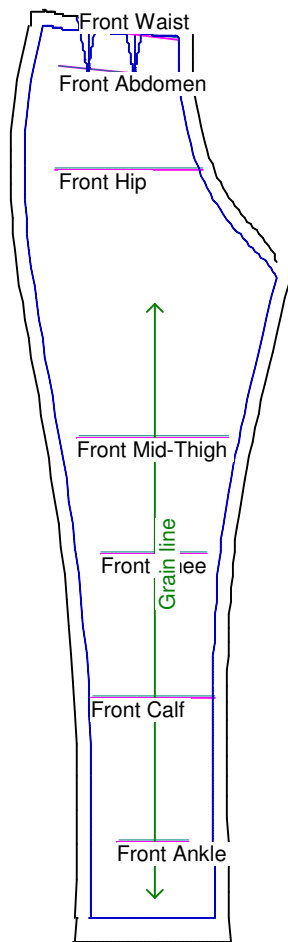
build 5.31 © 2005/2006 My Pattern Designer, LLC.

Friday - August 11, 2006 8:43:33



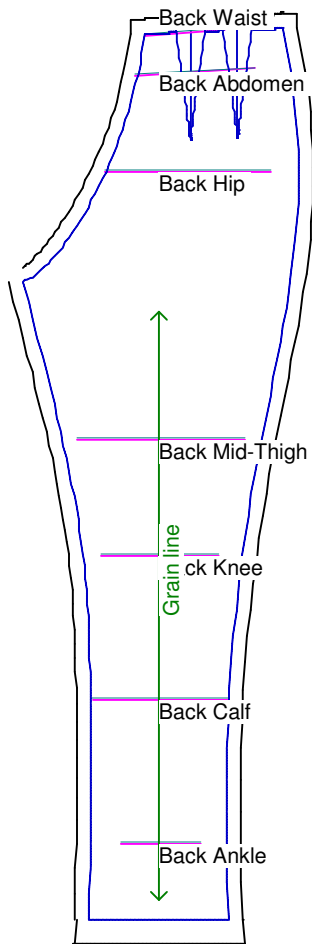
Bodice Sloper, Sleeve  
Fabric width = 4"  
Fabric height = 7"  
Sleeve type: Straight No Dart  
Sleeve length: full length  
Scale = 100%  
Custom designed using Gene  
Doll Shop Deluxe build 5.31 © 2005/2006 My Pattern Designer, LLC.  
Friday - August 11, 2006 8:43:33





## Pants Sloper, Front Right

Custom designed using the Gene measurement set  
Full length  
Total fabric width = 5"  
Total fabric height = 13"  
Total paper height needed to print = 13"  
Scale = 50%  
Using Doll Shop Deluxe  
build 5.31 © 2005/2006 My Pattern Designer, LLC.  
Friday - August 11, 2006 8:43:33



## Pants Sloper, Back Right

Custom designed using the Gene measurement set

Full length

Total fabric width = 5"

Total fabric height = 13"

Total paper height needed to print = 13"

Scale = 50%

Using Doll Shop Deluxe

build 5.31 © 2005/2006 My Pattern Designer, LLC.

Friday - August 11, 2006 8:43:33

Waistband  
Cut each on fold

