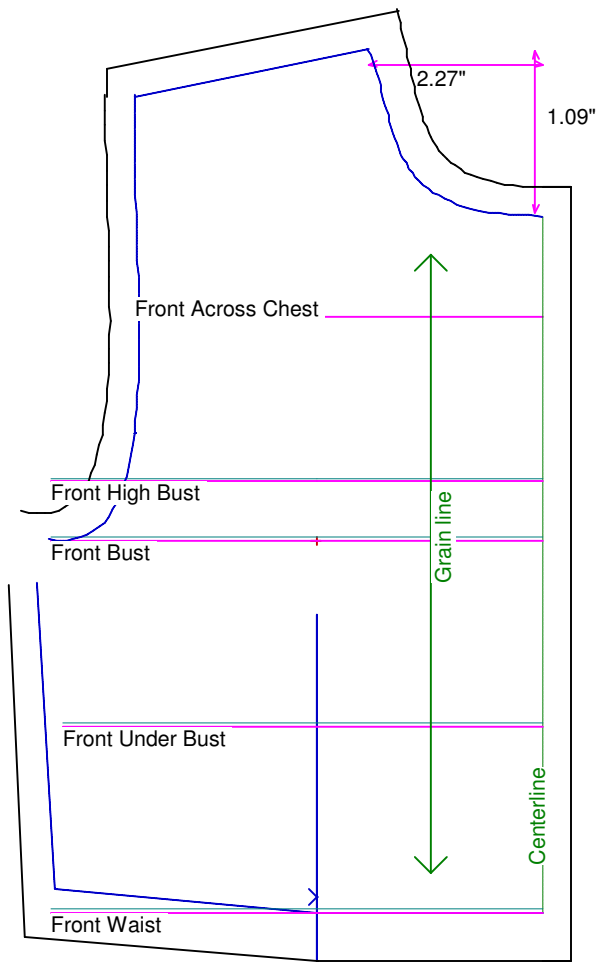


Neck Circumference	5 3/4	Shoulder Length	1 1/4
Shoulder Slope Front	4 3/4	Shoulder Slope Back	4 7/8
Across Shoulder Front	4 1/4	Across Shoulder Back	4 3/8
Across Chest	4 1/4	Across Back	4 5/8
Full Length Front	4 1/2	Full Length Back	4 3/4
Center Length Front	3 5/8	Center Length Back	4 1/8
Bust Front	5 1/8	Bust Back	5 7/8
Bust Depth	2 1/2	High Bust	5 1/8
Bust Radius	1	Under Bust Front	5
Bust Span	2 3/8	Side Length	2 1/8
Waist Front	5 1/8	Waist Back	6
High Waist Front	5 1/8	High Waist Back	6
High Waist Offset	1/2	Body Depth	3 1/8
Dress Waist Offset	0	Dart Center Offset	0
Armhole Depth	2	Overarm Length	5 3/8
Bicep	4 1/4	Elbow Bent	4
Wrist	3 1/2	Around Hand	4 1/4
Abdomen Depth	1/2	Elbow Depth	3 1/4
Abdomen Front	5 3/4	Abdomen Back	6 1/2
Hip Front	6	Hip Back	6 1/4
Crotch Length Front	3 5/8	Crotch Length Back	4 1/2
Inseam	7	Floor to Waist Side	10
Floor to Waist Front (conformed)	10	Floor to Waist Back (conformed)	10 1/4
Floor to Waist Front (straight)	10	Floor to Waist Back (straight)	10 1/4
Floor to Hip	7 7/8	Floor to Knee	4 1/4
Floor to Ankle	3/4	Knee Straight	5
Upper Thigh	6	Mid Thigh	5 1/2
Calf	5 1/2	Ankle	4 1/4
Ankle/Heel	5 1/2	Height	18
Around Head	12	Last saved on:	August 11 of 2006



Bodice Sloper, Front Right

NOTE: Cut 2 fronts and leave front opening unstitched to be pinned closed.

Custom designed using the American Girl Doll measurement set

Total fabric width = 4"

Total fabric height = 7"

Total paper height needed to print = 7"

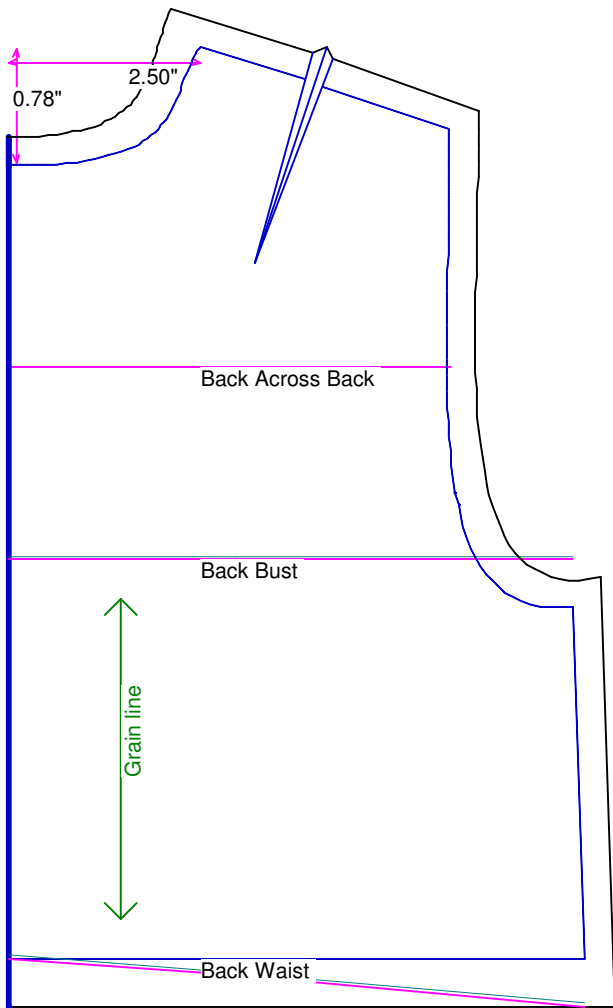
Neckline: jewel

Scale = 100%

Using Doll Shop Deluxe

build 5.31 © 2005/2006 My Pattern Designer, LLC.

Friday - August 11, 2006 8:11:06



Bodice Sloper, Back Right

Custom designed using the American Girl Doll measurement set

Total fabric width = 4"

Total fabric height = 7"

Total paper height needed to print = 7"

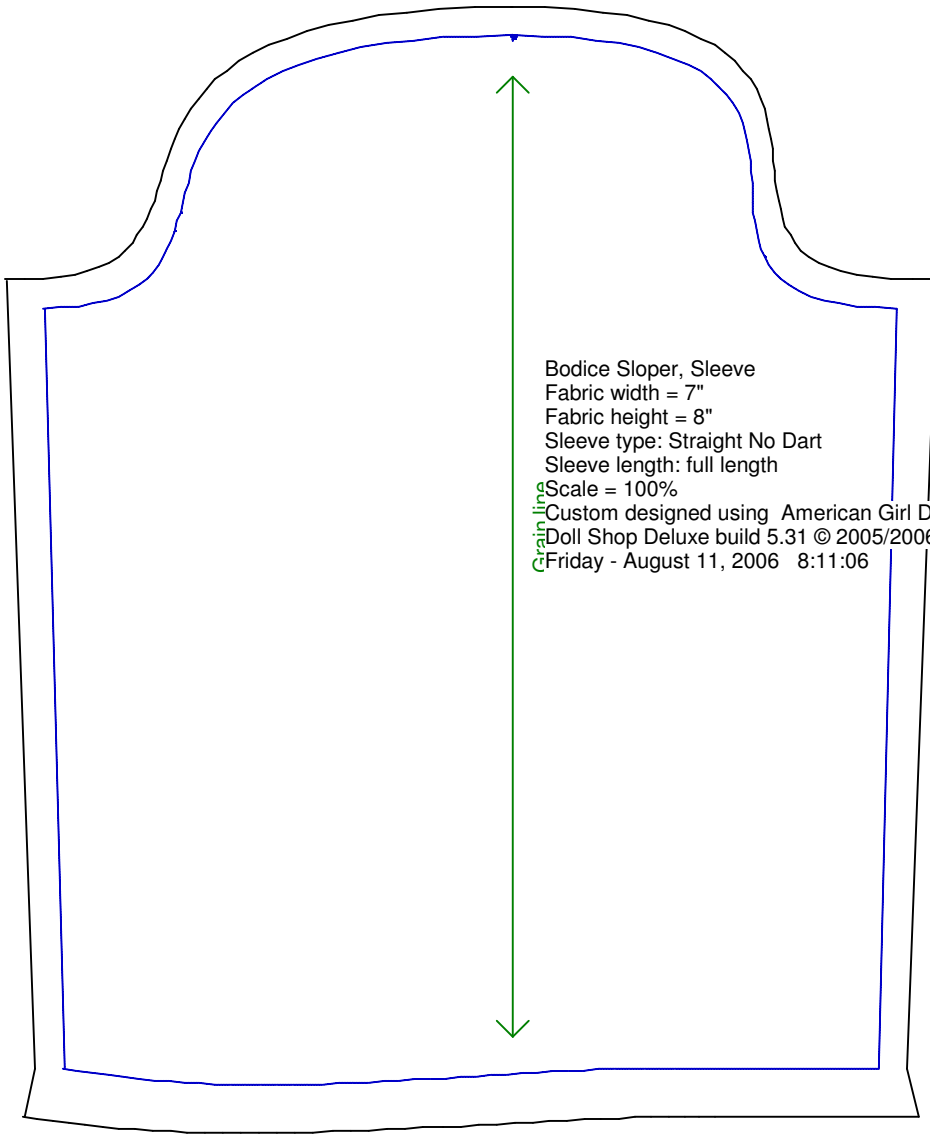
Neckline: jewel

Scale = 100%

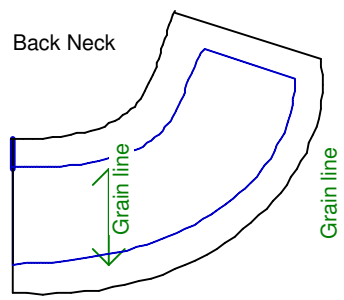
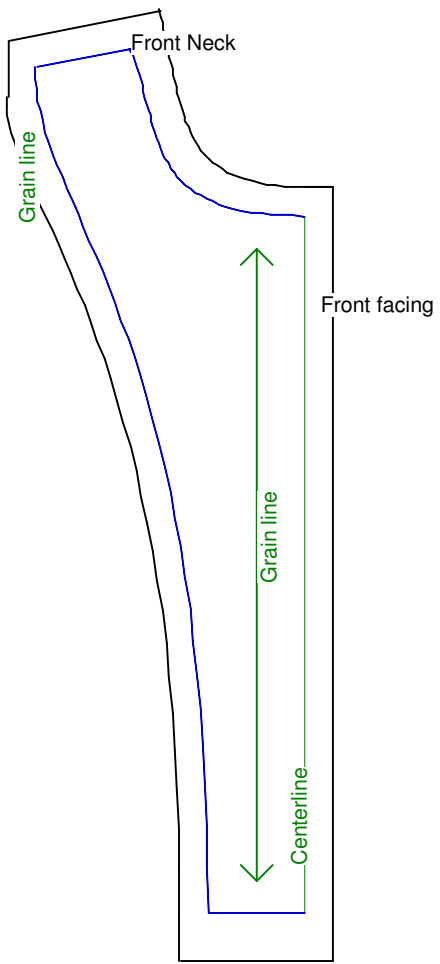
Using Doll Shop Deluxe

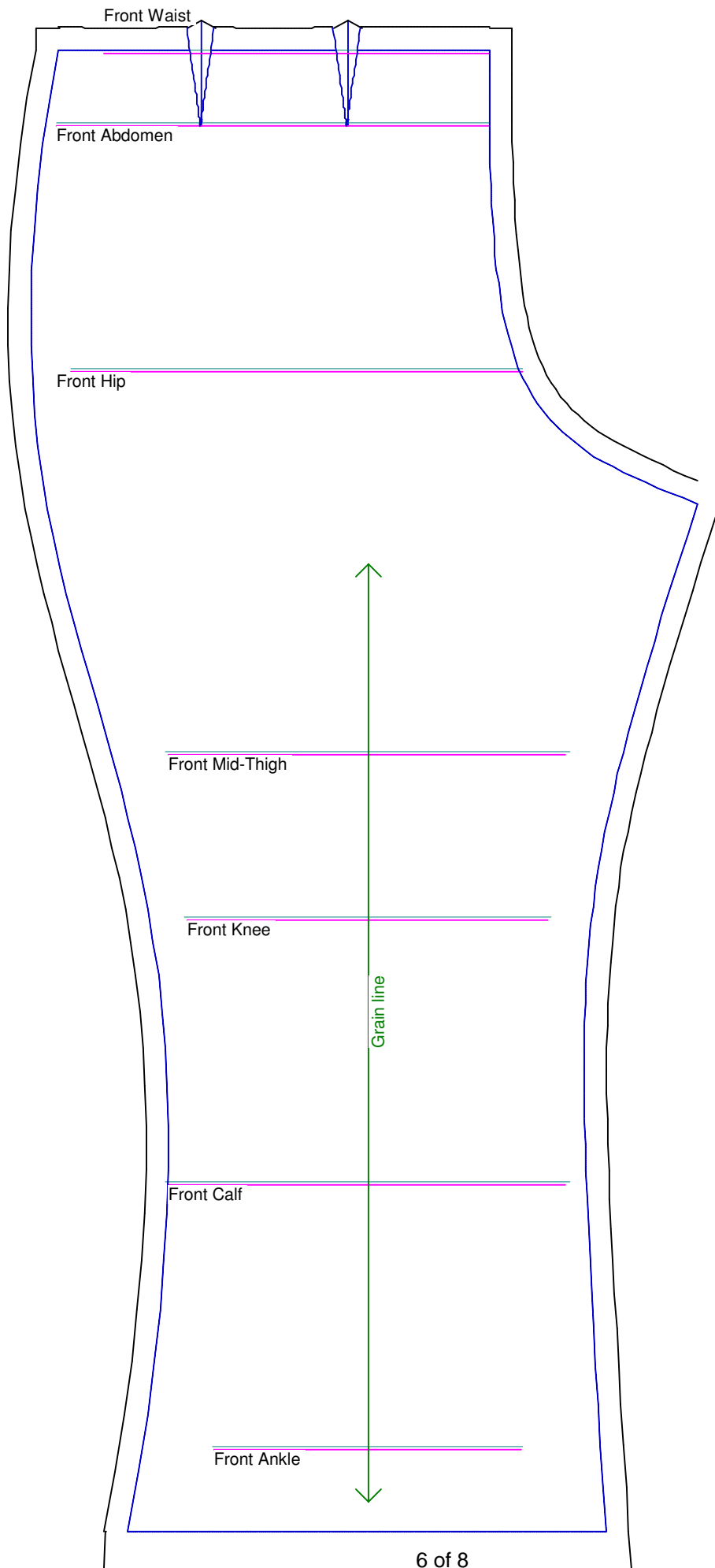
build 5.31 © 2005/2006 My Pattern Designer, LLC.

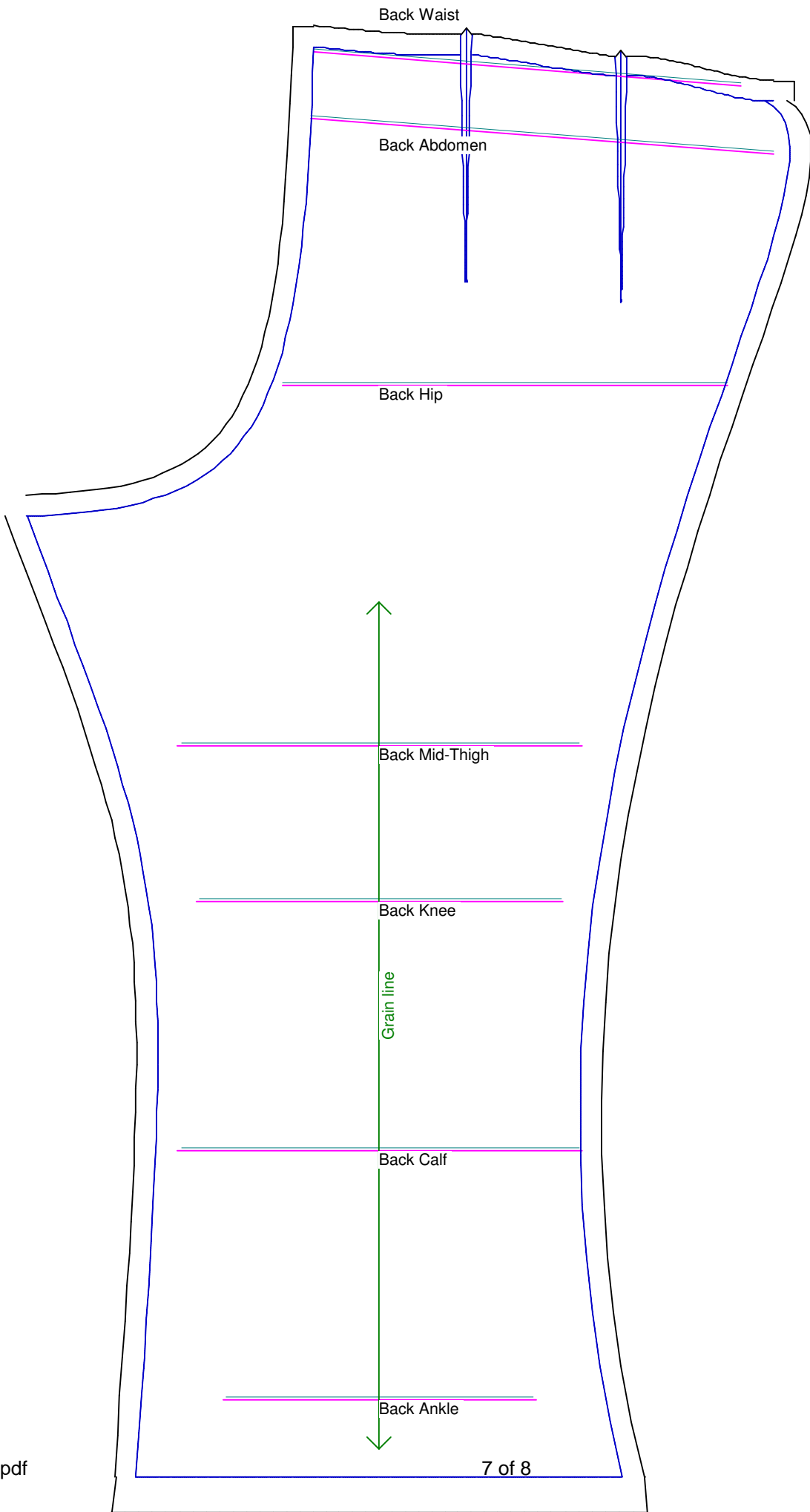
Friday - August 11, 2006 8:11:06



Bodice Sloper, Sleeve
Fabric width = 7"
Fabric height = 8"
Sleeve type: Straight No Dart
Sleeve length: full length
Scale = 100%
Custom designed using American Girl Doll
Doll Shop Deluxe build 5.31 © 2005/2006 My Pattern Designer, LLC.
Friday - August 11, 2006 8:11:06







Waistband
Cut each on fold

