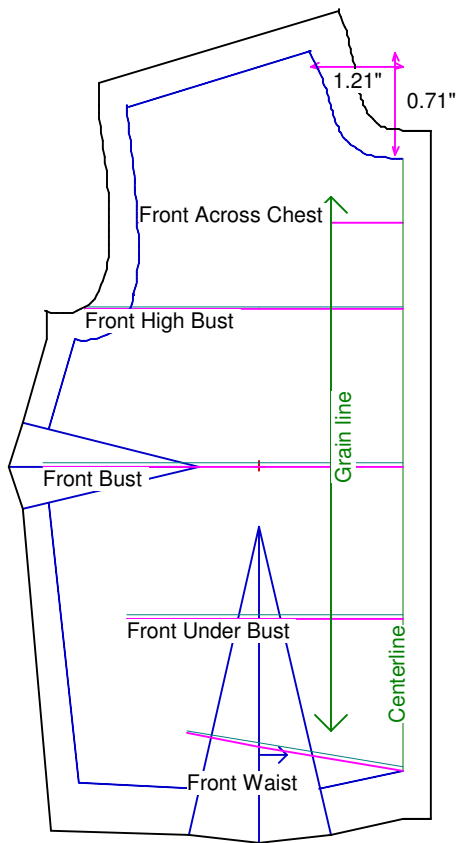


Neck Circumference	2 3/4	Shoulder Length	1
Shoulder Slope Front	3 3/4	Shoulder Slope Back	3 7/16
Across Shoulder Front	2 7/8	Across Shoulder Back	2 7/8
Across Chest	2 3/4	Across Back	2 5/8
Full Length Front	3 3/4	Full Length Back	3 1/2
Center Length Front	3 3/16	Center Length Back	3 1/4
Bust Front	3 3/4	Bust Back	3
Bust Depth	2	High Bust	3 5/16
Bust Radius	9/16	Under Bust Front	2 7/8
Bust Span	1 1/2	Side Length	2 1/8
Waist Front	2 1/4	Waist Back	2 1/4
High Waist Front	2 1/4	High Waist Back	2 1/4
High Waist Offset	1/2	Body Depth	2 1/4
Dress Waist Offset	0	Dart Center Offset	0
Armhole Depth	1 1/16	Overarm Length	4 7/8
Bicep	2 1/8	Elbow Bent	2 1/8
Wrist	1 3/8	Around Hand	1 3/4
Abdomen Depth	1/2	Elbow Depth	2 3/4
Abdomen Front	2 5/8	Abdomen Back	2 15/16
Hip Front	3	Hip Back	3 5/8
Crotch Length Front	2 7/8	Crotch Length Back	2 15/16
Inseam	6 7/8	Floor to Waist Side	9 5/8
Floor to Waist Front (conformed)	9 7/16	Floor to Waist Back (conformed)	9 1/2
Floor to Waist Front (straight)	9 7/16	Floor to Waist Back (straight)	9 1/2
Floor to Hip	8 1/2	Floor to Knee	4
Floor to Ankle	3/4	Knee Straight	2 3/8
Upper Thigh	3 3/4	Mid Thigh	3 1/2
Calf	2 3/4	Ankle	1 1/2
Ankle/Heel	2 1/16	Height	16 1/2
Around Head	6 3/8	Last saved on:	August 11 of 2006



Bodice Sloper, Front Right

NOTE: Cut 2 fronts and leave front opening unstitched to be pinned closed.

Custom designed using the Daisy/Willow measurement set

Total fabric width = 3"

Total fabric height = 6"

Total paper height needed to print = 6"

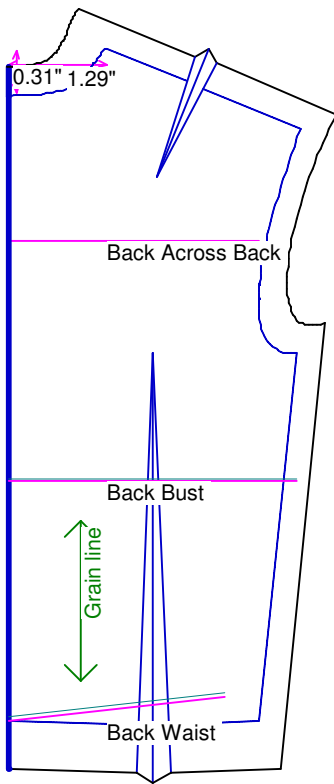
Neckline: jewel

Scale = 100%

Using Doll Shop Deluxe

build 5.31 © 2005/2006 My Pattern Designer, LLC.

Friday - August 11, 2006 8:39:07



Bodice Sloper, Back Right

Custom designed using the Daisy/Willow measurement set

Total fabric width = 3"

Total fabric height = 6"

Total paper height needed to print = 6"

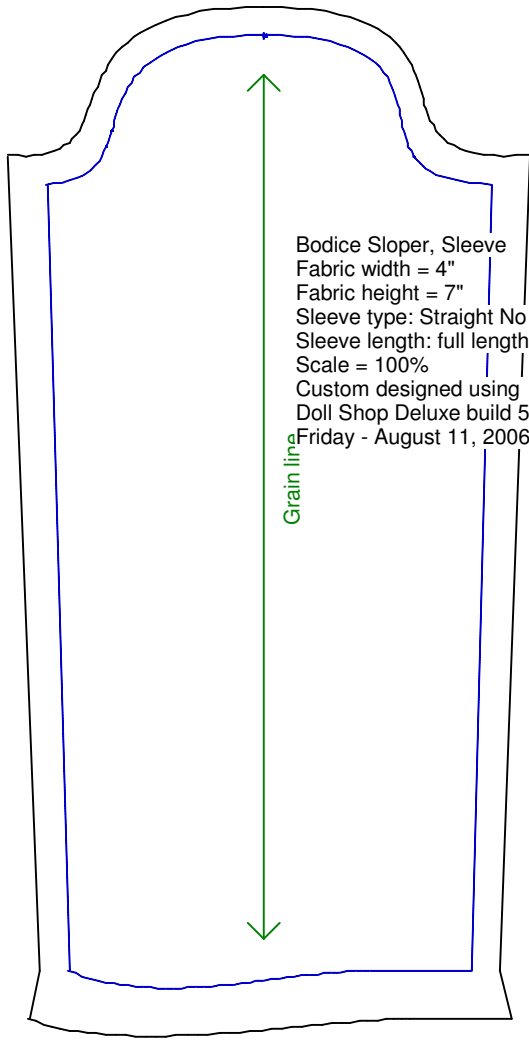
Neckline: jewel

Scale = 100%

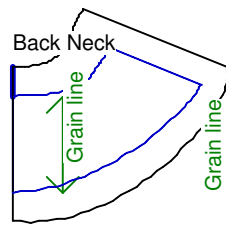
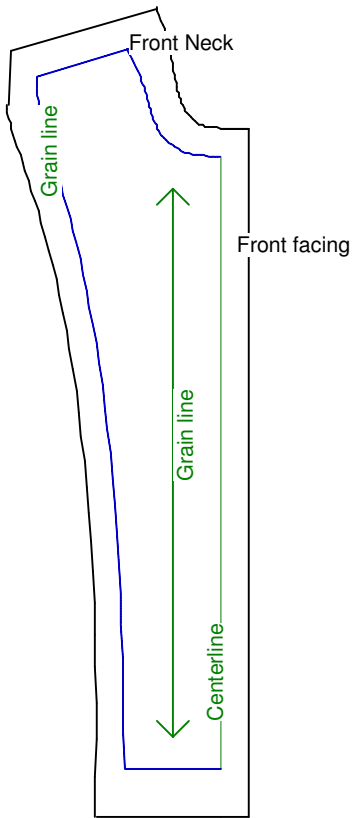
Using Doll Shop Deluxe

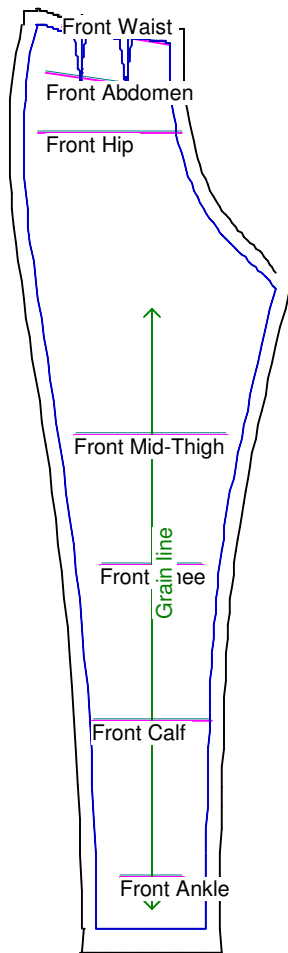
build 5.31 © 2005/2006 My Pattern Designer, LLC.

Friday - August 11, 2006 8:39:07



Bodice Sloper, Sleeve
Fabric width = 4"
Fabric height = 7"
Sleeve type: Straight No Dart
Sleeve length: full length
Scale = 100%
Custom designed using Daisy/Willow
Doll Shop Deluxe build 5.31 © 2005/2006 My Pattern Designer, LLC.
Friday - August 11, 2006 8:39:07





Pants Sloper, Front Right

Custom designed using the Daisy/Willow measurement set

Full length

Total fabric width = 5"

Total fabric height = 13"

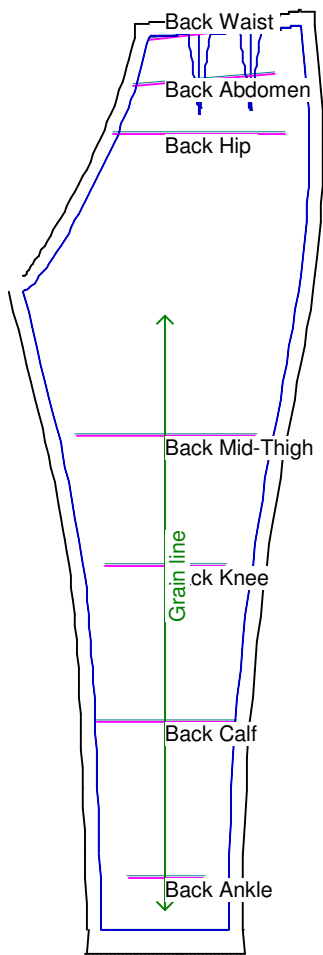
Total paper height needed to print = 13"

Scale = 50%

Using Doll Shop Deluxe

build 5.31 © 2005/2006 My Pattern Designer, LLC.

Friday - August 11, 2006 8:39:07



Pants Sloper, Back Right

Custom designed using the Daisy/Willow measurement set

Full length

Total fabric width = 5"

Total fabric height = 13"

Total paper height needed to print = 13"

Scale = 50%

Using Doll Shop Deluxe

build 5.31 © 2005/2006 My Pattern Designer, LLC.

Friday - August 11, 2006 8:39:07

Waistband
Cut each on fold

