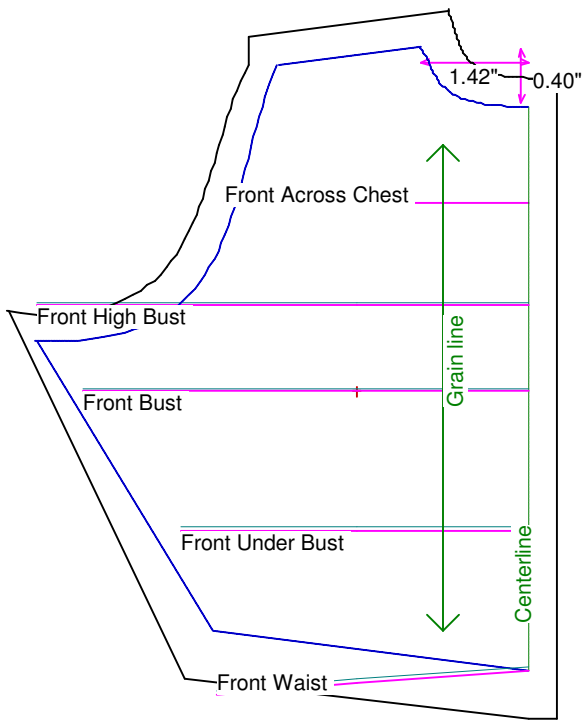


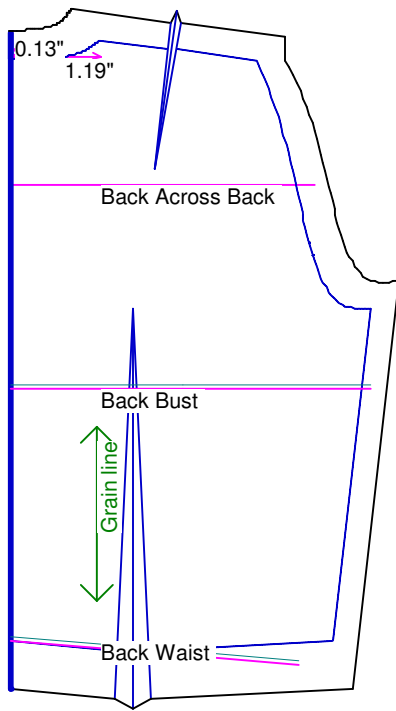
Neck Circumference	3	Shoulder Length	3/4
Shoulder Slope Front	3 7/16	Shoulder Slope Back	3 1/2
Across Shoulder Front	2 5/8	Across Shoulder Back	2 7/16
Across Chest	3 3/16	Across Back	3 3/16
Full Length Front	3 1/4	Full Length Back	3 1/8
Center Length Front	2 15/16	Center Length Back	3 1/16
Bust Front	3 3/4	Bust Back	3 3/4
Bust Depth	1 3/4	High Bust	5 1/8
Bust Radius	3/8	Under Bust Front	3 5/8
Bust Span	1 13/16	Side Length	1 15/16
Waist Front	3 1/4	Waist Back	3
High Waist Front	3 1/2	High Waist Back	3 9/16
High Waist Offset	1/4	Body Depth	1 5/8
Dress Waist Offset	1/2	Dart Center Offset	0
Armhole Depth	1 1/4	Overarm Length	5 3/4
Bicep	2 1/2	Elbow Bent	5/8
Wrist	2	Around Hand	2 3/4
Abdomen Depth	5/8	Elbow Depth	3
Abdomen Front	3	Abdomen Back	3 1/2
Hip Front	3 3/4	Hip Back	4 1/8
Crotch Length Front	2 7/8	Crotch Length Back	3 1/4
Inseam	8	Floor to Waist Side	10 1/2
Floor to Waist Front (conformed)	10 13/16	Floor to Waist Back (conformed)	11
Floor to Waist Front (straight)	10 5/8	Floor to Waist Back (straight)	10 5/8
Floor to Hip	9 1/2	Floor to Knee	5
Floor to Ankle	1 1/4	Knee Straight	3 1/4
Upper Thigh	4 5/16	Mid Thigh	3 1/4
Calf	3 1/4	Ankle	2 3/16
Ankle/Heel	1 1/8	Height	18
Around Head	7 1/16	Last saved on:	August 6 of 2006



Bodice Sloper, Front Right

NOTE: Cut 2 fronts and leave front opening unstitched to be pinned closed.
 Custom designed using the DoD_M_LL measurement set

Total fabric width = 4"
 Total fabric height = 5"
 Total paper height needed to print = 5"
 Neckline: jewel
 Scale = 100%
 Using Doll Shop Deluxe
 build 5.31 © 2005/2006 My Pattern Designer, LLC.
 Thursday - October 5, 2006 7:12:07



Bodice Sloper, Back Right

Custom designed using the DoD_M_LL measurement set

Total fabric width = 3"

Total fabric height = 5"

Total paper height needed to print = 5"

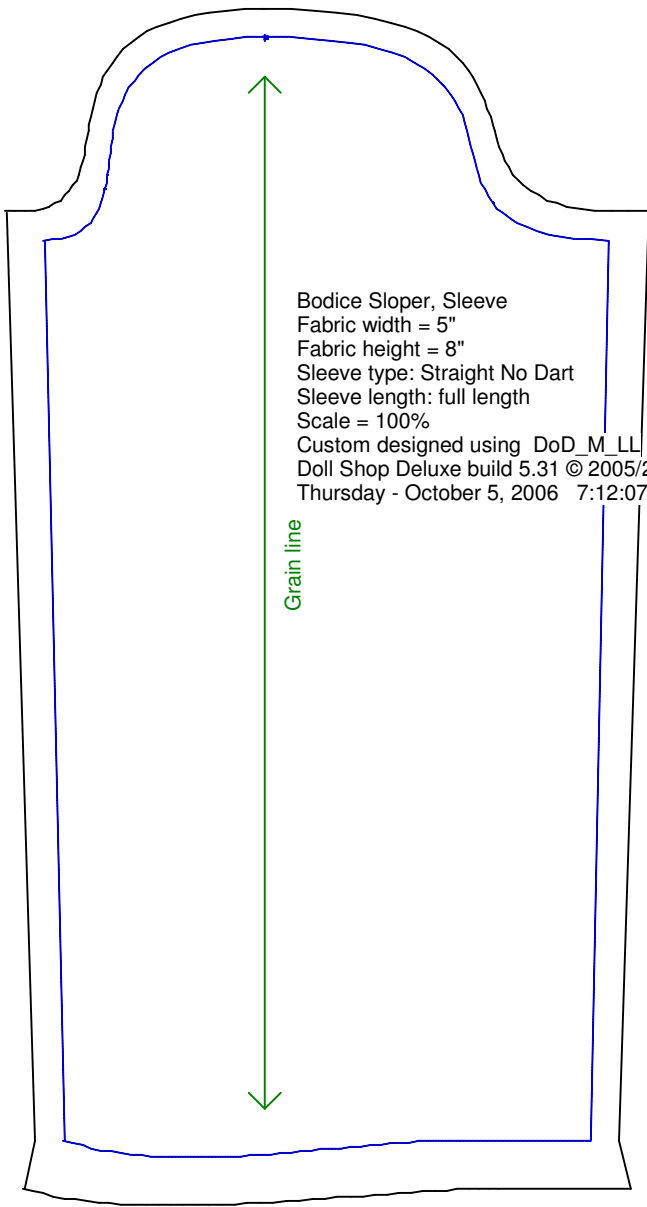
Neckline: jewel

Scale = 100%

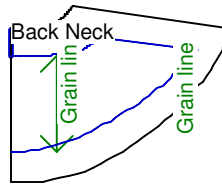
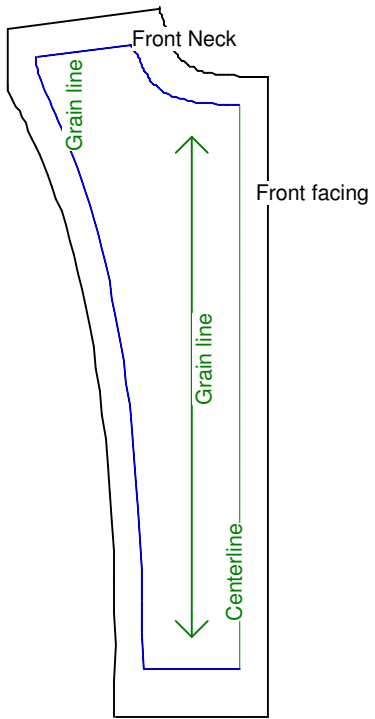
Using Doll Shop Deluxe

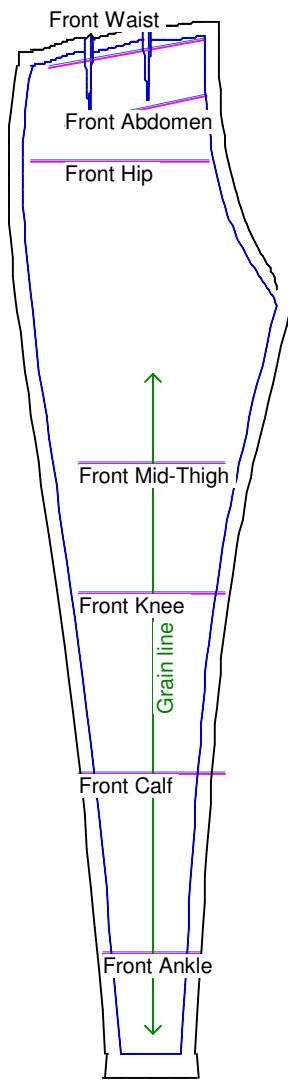
build 5.31 © 2005/2006 My Pattern Designer, LLC.

Thursday - October 5, 2006 7:12:07



Bodice Sloper, Sleeve
Fabric width = 5"
Fabric height = 8"
Sleeve type: Straight No Dart
Sleeve length: full length
Scale = 100%
Custom designed using DoD_M_LL
Doll Shop Deluxe build 5.31 © 2005/2006 My Pattern Designer, LLC.
Thursday - October 5, 2006 7:12:07





Pants Sloper, Front Right

Custom designed using the DoD_M_LL measurement set

Full length

Total fabric width = 5"

Total fabric height = 14"

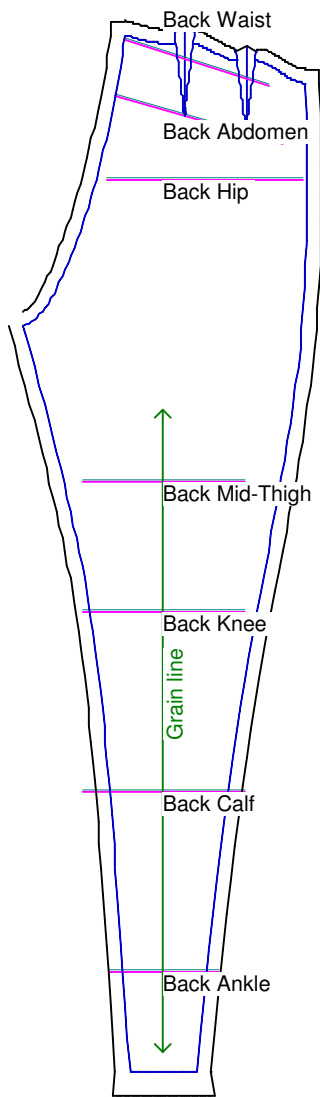
Total paper height needed to print = 14"

Scale = 50%

Using Doll Shop Deluxe

build 5.31 © 2005/2006 My Pattern Designer, LLC.

Thursday - October 5, 2006 7:13:55



Pants Sloper, Back Right

Custom designed using the DoD_M_LL measurement set
Full length
Total fabric width = 5"
Total fabric height = 14"
Total paper height needed to print = 15"
Scale = 50%
Using Doll Shop Deluxe
build 5.31 © 2005/2006 My Pattern Designer, LLC.
Thursday - October 5, 2006 7:13:55

Waistband
Cut each on fold

