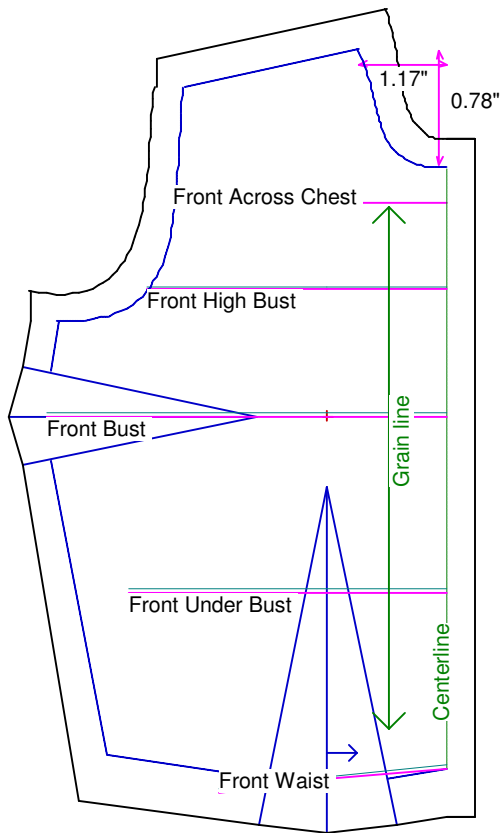


Neck Circumference	2 5/8	Shoulder Length	15/16
Shoulder Slope Front	3 13/16	Shoulder Slope Back	3 1/4
Across Shoulder Front	2 3/4	Across Shoulder Back	2 15/16
Across Chest	2 7/8	Across Back	3
Full Length Front	3 3/4	Full Length Back	3 7/16
Center Length Front	3 1/8	Center Length Back	3 1/8
Bust Front	4 3/16	Bust Back	3 3/8
Bust Depth	1 7/8	High Bust	3 1/8
Bust Radius	5/8	Under Bust Front	3 5/16
Bust Span	1 1/4	Side Length	2
Waist Front	2 3/8	Waist Back	2
High Waist Front	2 3/8	High Waist Back	2
High Waist Offset	1/2	Body Depth	2 1/2
Dress Waist Offset	0	Dart Center Offset	0
Armhole Depth	1 1/16	Overarm Length	4 7/8
Bicep	2	Elbow Bent	4 13/16
Wrist	1 3/16	Around Hand	2
Abdomen Depth	1/2	Elbow Depth	2 7/8
Abdomen Front	2 11/16	Abdomen Back	2 3/8
Hip Front	3 1/4	Hip Back	3 1/4
Crotch Length Front	3 3/8	Crotch Length Back	2 3/8
Inseam	7 1/4	Floor to Waist Side	9 3/8
Floor to Waist Front (conformed)	9 1/2	Floor to Waist Back (conformed)	9 1/4
Floor to Waist Front (straight)	9 1/2	Floor to Waist Back (straight)	9 1/4
Floor to Hip	7 13/16	Floor to Knee	3 7/8
Floor to Ankle	5/8	Knee Straight	2 3/4
Upper Thigh	4	Mid Thigh	3 7/8
Calf	2 7/8	Ankle	1 9/16
Ankle/Heel	2 3/16	Height	15 3/4
Around Head	6	Last saved on:	August 11 of 2006



Bodice Sloper, Front Right

NOTE: Cut 2 fronts and leave front opening unstitched to be pinned closed.

Custom designed using the Eve by Waukeen measurement set

Total fabric width = 4"

Total fabric height = 6"

Total paper height needed to print = 6"

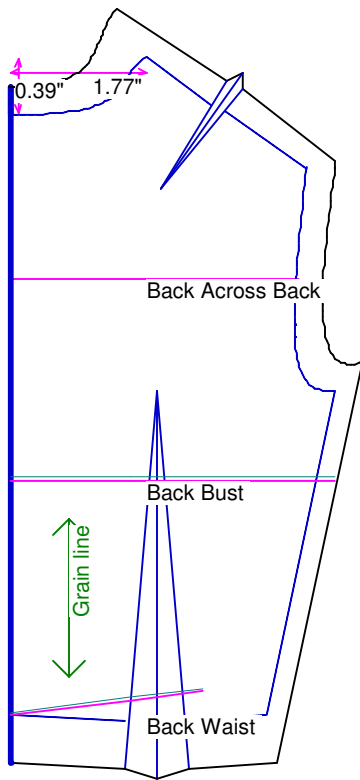
Neckline: jewel

Scale = 100%

Using Doll Shop Deluxe

build 5.31 © 2005/2006 My Pattern Designer, LLC.

Friday - August 11, 2006 8:41:35



Bodice Sloper, Back Right

Custom designed using the Eve by Waukeen measurement set

Total fabric width = 3"

Total fabric height = 6"

Total paper height needed to print = 6"

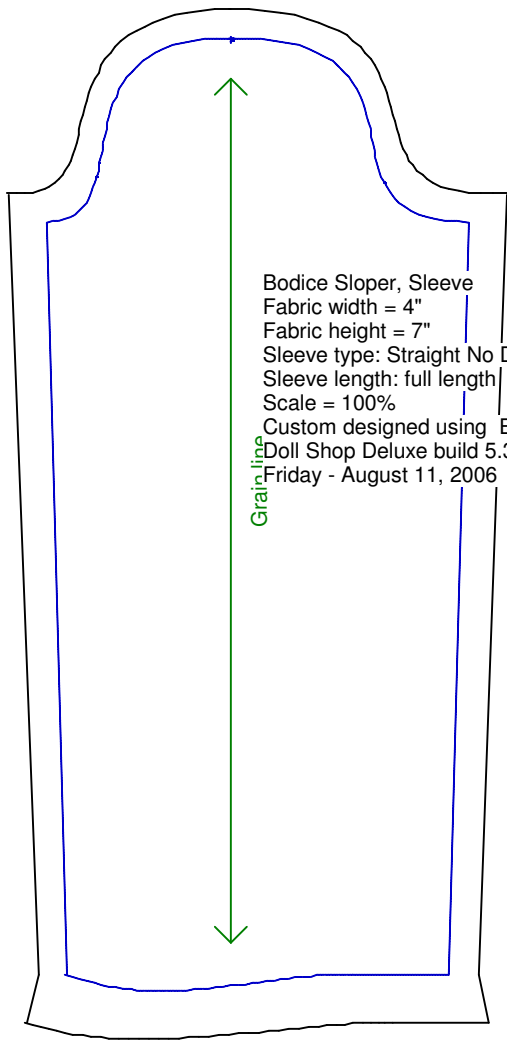
Neckline: jewel

Scale = 100%

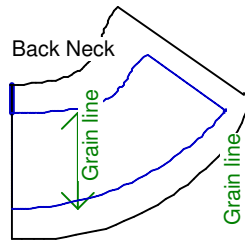
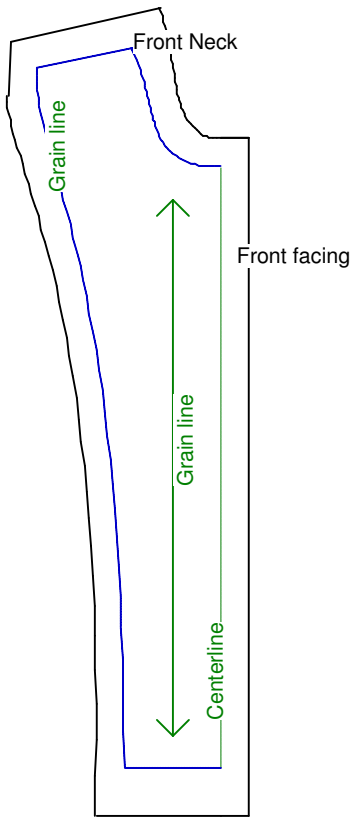
Using Doll Shop Deluxe

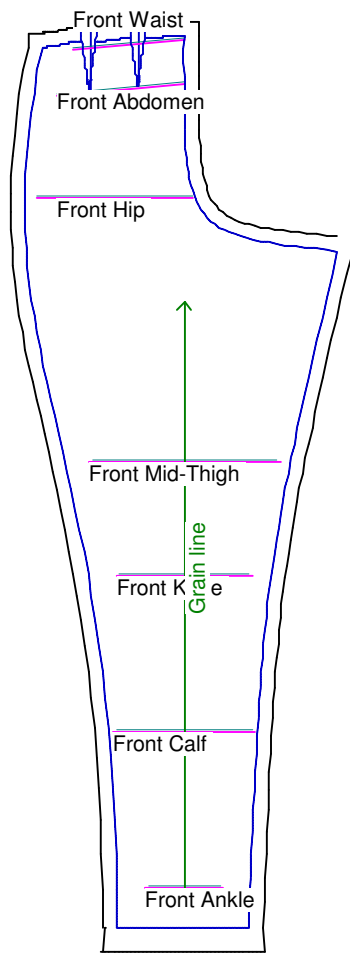
build 5.31 © 2005/2006 My Pattern Designer, LLC.

Friday - August 11, 2006 8:41:35



Bodice Sloper, Sleeve
Fabric width = 4"
Fabric height = 7"
Sleeve type: Straight No Dart
Sleeve length: full length
Scale = 100%
Custom designed using Eve by Waukeen
Doll Shop Deluxe build 5.31 © 2005/2006 My Pattern Designer, LLC.
Friday - August 11, 2006 8:41:35





Pants Sloper, Front Right

Custom designed using the Eve by Waukeen measurement set

Full length

Total fabric width = 6"

Total fabric height = 13"

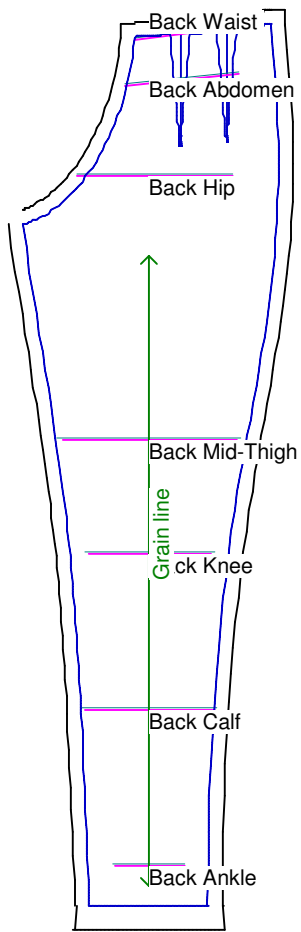
Total paper height needed to print = 13"

Scale = 50%

Using Doll Shop Deluxe

build 5.31 © 2005/2006 My Pattern Designer, LLC.

Friday - August 11, 2006 8:41:35



Pants Sloper, Back Right

Custom designed using the Eve by Waukeen measurement set

Full length

Total fabric width = 5"

Total fabric height = 12"

Total paper height needed to print = 13"

Scale = 50%

Using Doll Shop Deluxe

build 5.31 © 2005/2006 My Pattern Designer, LLC.

Friday - August 11, 2006 8:41:35

Waistband
Cut each on fold

