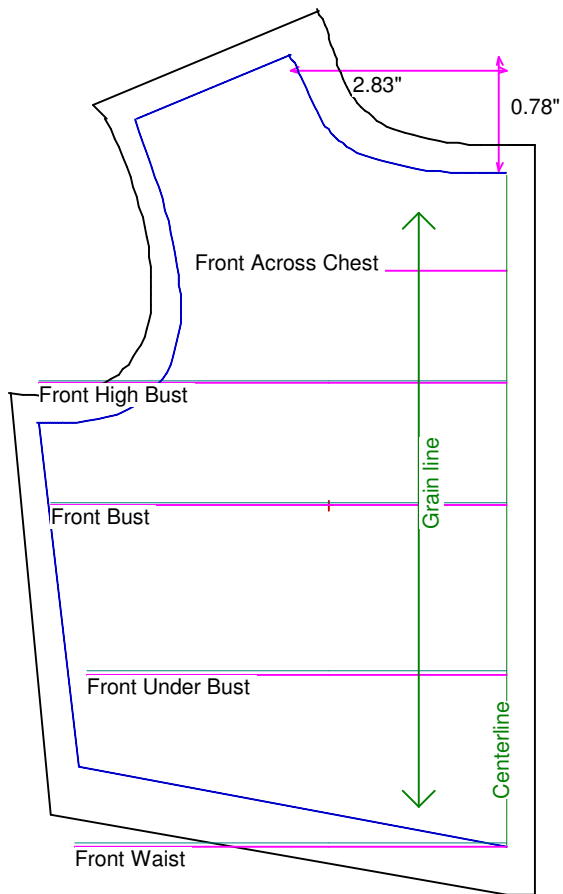


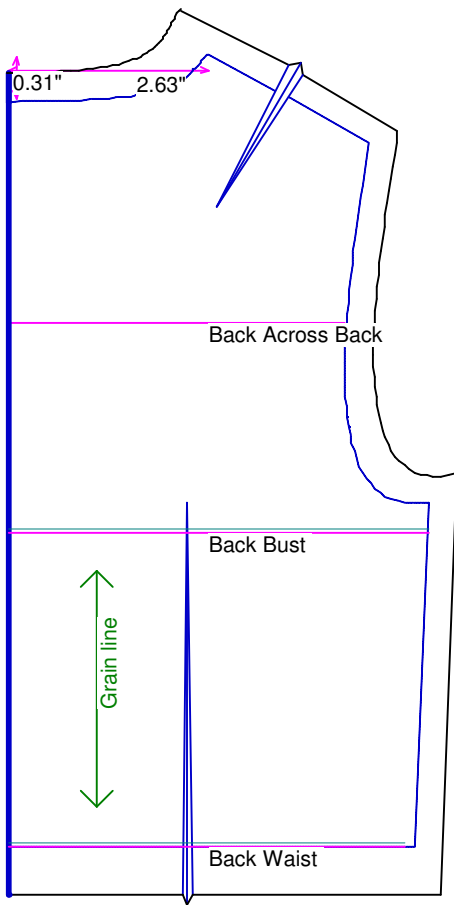
Neck Circumference	5 1/8	Shoulder Length	7/8
Shoulder Slope Front	4 1/4	Shoulder Slope Back	4 1/8
Across Shoulder Front	3 7/8	Across Shoulder Back	3 5/8
Across Chest	3 1/4	Across Back	3 1/2
Full Length Front	4 1/8	Full Length Back	4 1/8
Center Length Front	3 1/2	Center Length Back	3 7/8
Bust Front	4 3/4	Bust Back	4 3/8
Bust Depth	2 1/4	High Bust	4 7/8
Bust Radius	1	Under Bust Front	4 3/8
Bust Span	1 7/8	Side Length	2
Waist Front	4 1/2	Waist Back	4 1/8
High Waist Front	4 1/2	High Waist Back	4 1/8
High Waist Offset	3/4	Body Depth	3 1/8
Dress Waist Offset	0	Dart Center Offset	0
Armhole Depth	1 3/8	Overarm Length	5 3/4
Bicep	3 1/2	Elbow Bent	3 5/8
Wrist	2 5/8	Around Hand	3 3/4
Abdomen Depth	3/4	Elbow Depth	3 1/4
Abdomen Front	4 5/8	Abdomen Back	5
Hip Front	4 1/2	Hip Back	5 7/8
Crotch Length Front	4	Crotch Length Back	3 5/8
Inseam	6 7/8	Floor to Waist Side	9 3/4
Floor to Waist Front (conformed)	9 3/4	Floor to Waist Back (conformed)	9 3/4
Floor to Waist Front (straight)	9 3/4	Floor to Waist Back (straight)	9 3/4
Floor to Hip	8 1/2	Floor to Knee	4 3/8
Floor to Ankle	1 1/8	Knee Straight	4 3/4
Upper Thigh	5 3/4	Mid Thigh	5 1/4
Calf	4 1/2	Ankle	3 3/8
Ankle/Heel	4 1/8	Height	18
Around Head	11 1/4	Last saved on:	August 11 of 2006



Bodice Sloper, Front Right

NOTE: Cut 2 fronts and leave front opening unstitched to be pinned closed.
 Custom designed using the Magic Attic Doll measurement set

Total fabric width = 4"
 Total fabric height = 6"
 Total paper height needed to print = 6"
 Neckline: jewel
 Scale = 100%
 Using Doll Shop Deluxe
 build 5.31 © 2005/2006 My Pattern Designer, LLC.
 Friday - August 11, 2006 8:50:00



Bodice Sloper, Back Right

Custom designed using the Magic Attic Doll measurement set

Total fabric width = 3"

Total fabric height = 6"

Total paper height needed to print = 6"

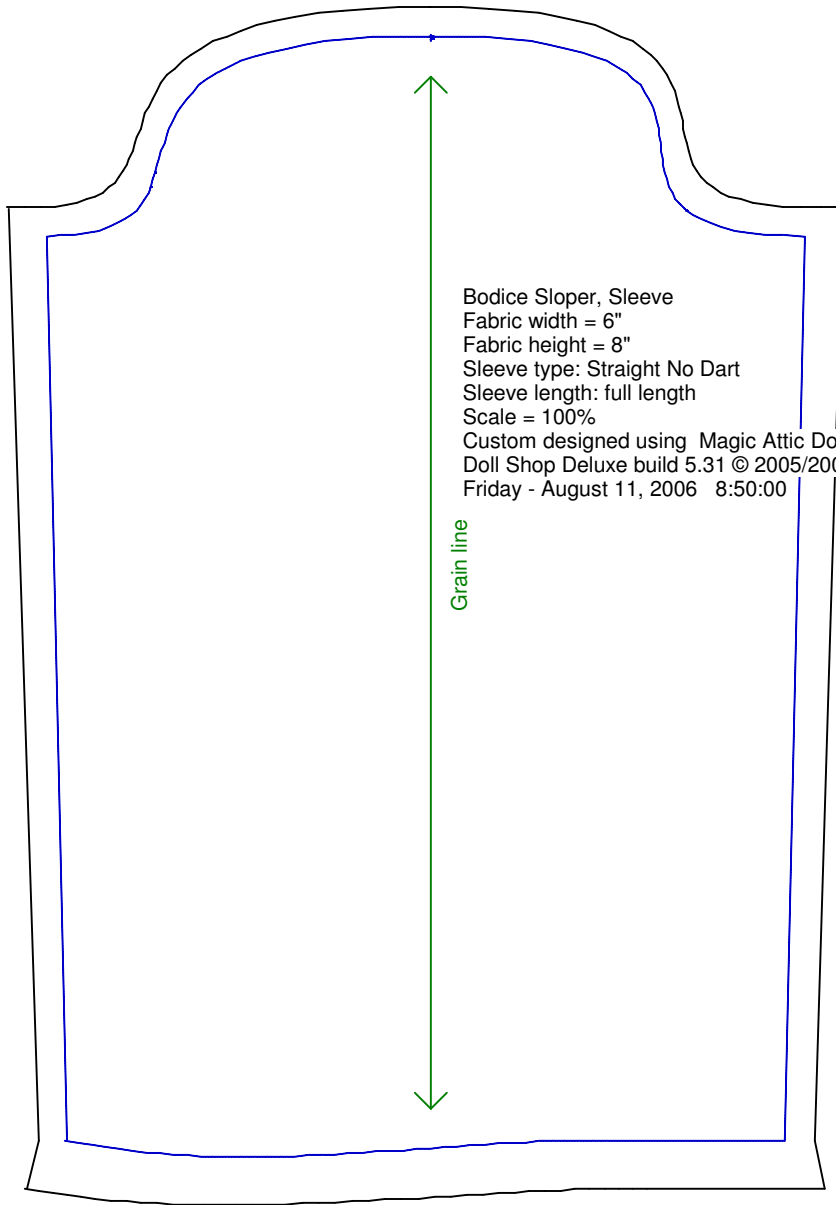
Neckline: jewel

Scale = 100%

Using Doll Shop Deluxe

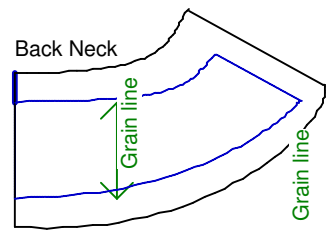
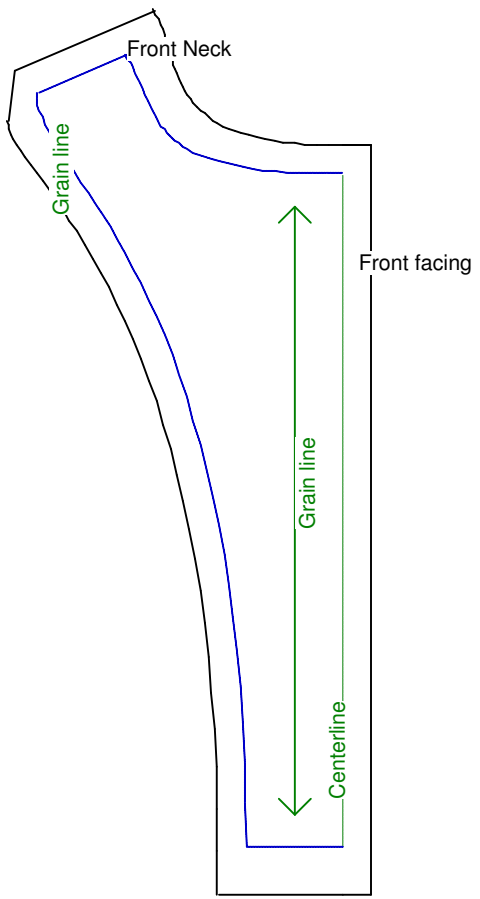
build 5.31 © 2005/2006 My Pattern Designer, LLC.

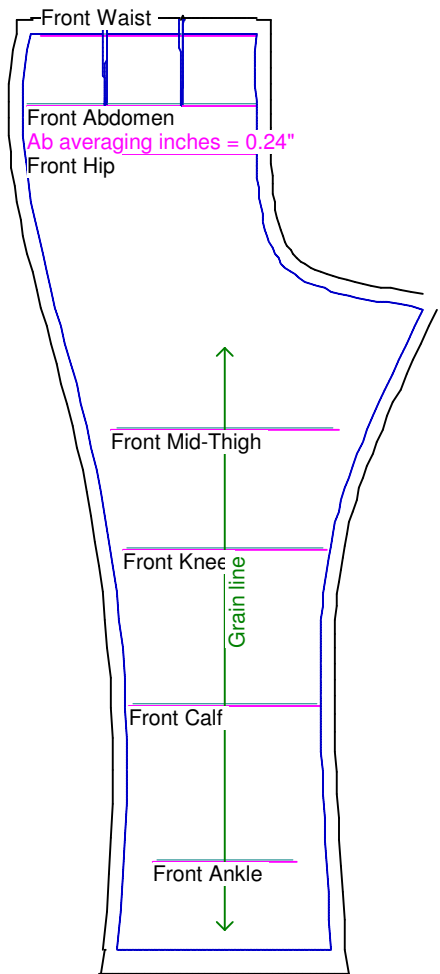
Friday - August 11, 2006 8:50:00



Bodice Sloper, Sleeve
Fabric width = 6"
Fabric height = 8"
Sleeve type: Straight No Dart
Sleeve length: full length
Scale = 100%
Custom designed using Magic Attic Doll
Doll Shop Deluxe build 5.31 © 2005/2006 My Pattern Designer, LLC.
Friday - August 11, 2006 8:50:00

Grain line





Pants Sloper, Front Right

Custom designed using the Magic Attic Doll measurement set

Full length

Total fabric width = 7"

Total fabric height = 13"

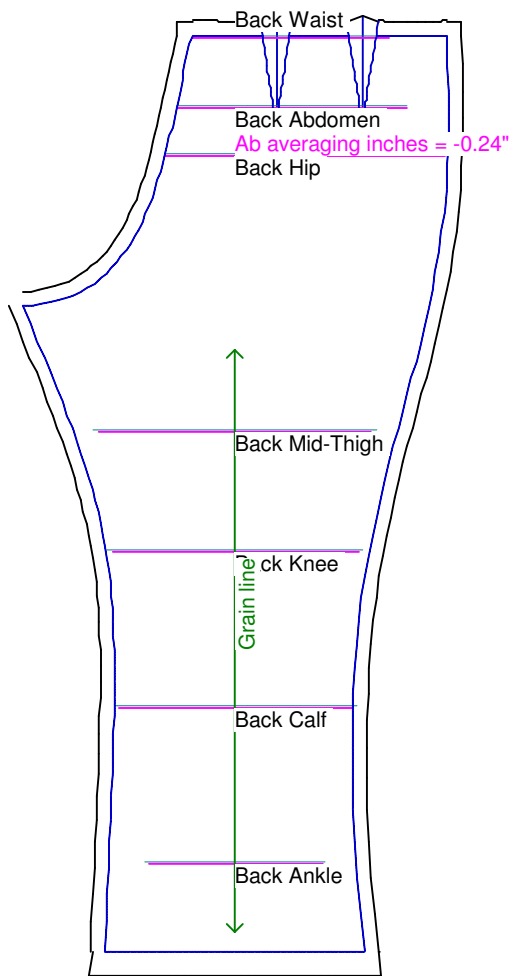
Total paper height needed to print = 13"

Scale = 50%

Using Doll Shop Deluxe

build 5.31 © 2005/2006 My Pattern Designer, LLC.

Friday - August 11, 2006 8:50:00



Pants Sloper, Back Right

Custom designed using the Magic Attic Doll measurement set

Full length

Total fabric width = 7"

Total fabric height = 13"

Total paper height needed to print = 13"

Scale = 50%

Using Doll Shop Deluxe

build 5.31 © 2005/2006 My Pattern Designer, LLC.

Friday - August 11, 2006 8:50:00

Waistband
Cut each on fold

