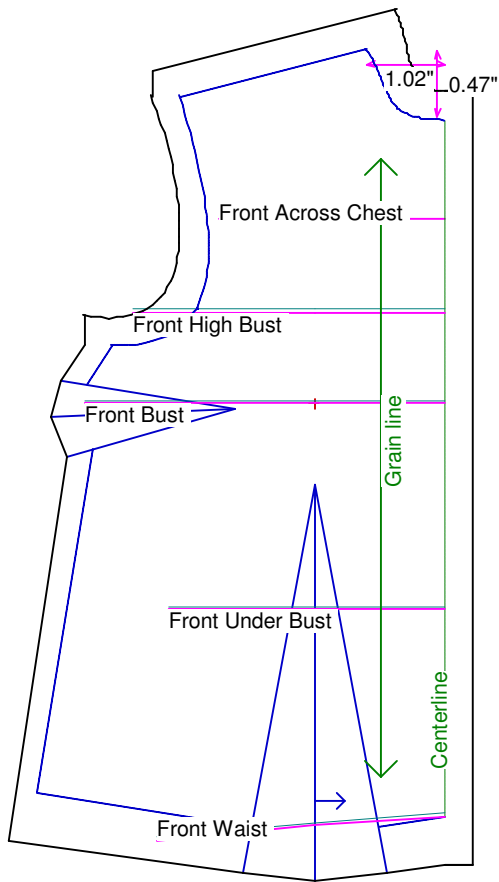


| | | | |
|---|--------|--|-------------------|
| Neck Circumference | 3 | Shoulder Length | 1 |
| Shoulder Slope Front | 4 | Shoulder Slope Back | 3 1/2 |
| Across Shoulder Front | 2 3/4 | Across Shoulder Back | 3 |
| Across Chest | 2 3/8 | Across Back | 2 1/2 |
| Full Length Front | 4 | Full Length Back | 3 1/2 |
| Center Length Front | 3 5/8 | Center Length Back | 3 1/4 |
| Bust Front | 3 3/4 | Bust Back | 2 5/8 |
| Bust Depth | 1 3/4 | High Bust | 3 1/4 |
| Bust Radius | 3/4 | Under Bust Front | 2 7/8 |
| Bust Span | 1 3/8 | Side Length | 2 1/4 |
| Waist Front | 3 | Waist Back | 2 5/8 |
| High Waist Front | 2 5/8 | High Waist Back | 2 3/8 |
| High Waist Offset | 3/4 | Body Depth | 1 5/8 |
| Dress Waist Offset | 0 | Dart Center Offset | 0 |
| Armhole Depth | 1 1/8 | Overarm Length | 5 5/8 |
| Bicep | 2 1/4 | Elbow Bent | 2 1/2 |
| Wrist | 1 5/8 | Around Hand | 2 1/2 |
| Abdomen Depth | 3/4 | Elbow Depth | 3 1/4 |
| Abdomen Front | 3 3/8 | Abdomen Back | 3 1/2 |
| Hip Front | 3 5/8 | Hip Back | 4 1/4 |
| Crotch Length Front | 2 1/2 | Crotch Length Back | 2 3/4 |
| Inseam | 8 1/8 | Floor to Waist Side | 10 |
| Floor to Waist Front (conformed) | 10 1/8 | Floor to Waist Back (conformed) | 10 3/4 |
| Floor to Waist Front (straight) | 10 1/8 | Floor to Waist Back (straight) | 10 3/8 |
| Floor to Hip | 8 7/8 | Floor to Knee | 4 5/8 |
| Floor to Ankle | 5/8 | Knee Straight | 3 |
| Upper Thigh | 4 | Mid Thigh | 3 7/8 |
| Calf | 2 7/8 | Ankle | 2 |
| Ankle/Heel | 3 | Height | 23 1/4 |
| Around Head | 8 1/8 | Last saved on: | August 11 of 2006 |



Bodice Sloper, Front Right

NOTE: Cut 2 fronts and leave front opening unstitched to be pinned closed.

Custom designed using the mnf1 measurement set

Total fabric width = 4"

Total fabric height = 6"

Total paper height needed to print = 6"

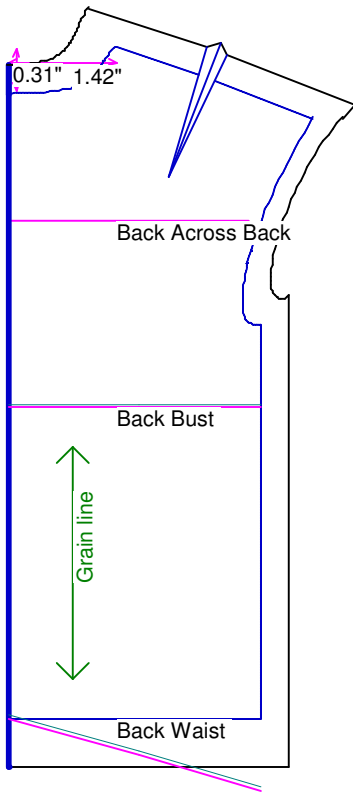
Neckline: jewel

Scale = 100%

Using Doll Shop Deluxe

build 5.31 © 2005/2006 My Pattern Designer, LLC.

Sunday - August 20, 2006 9:10:41



Bodice Sloper, Back Right

Custom designed using the mnf1 measurement set

Total fabric width = 3"

Total fabric height = 5"

Total paper height needed to print = 5"

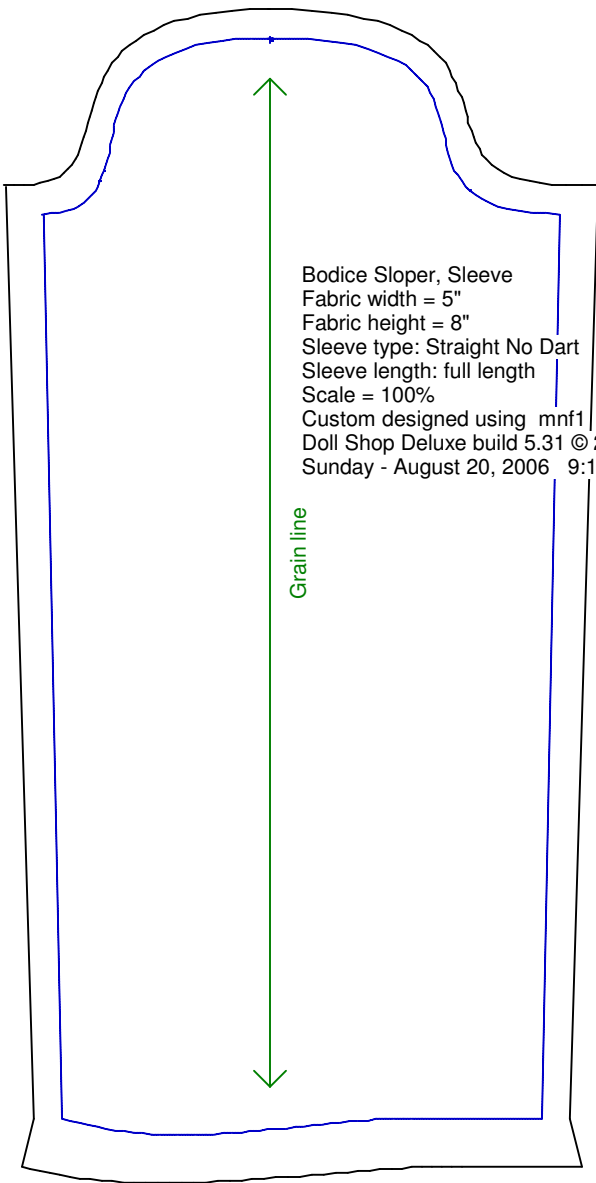
Neckline: jewel

Scale = 100%

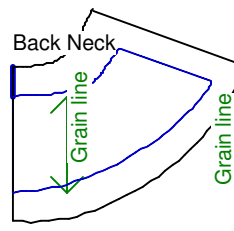
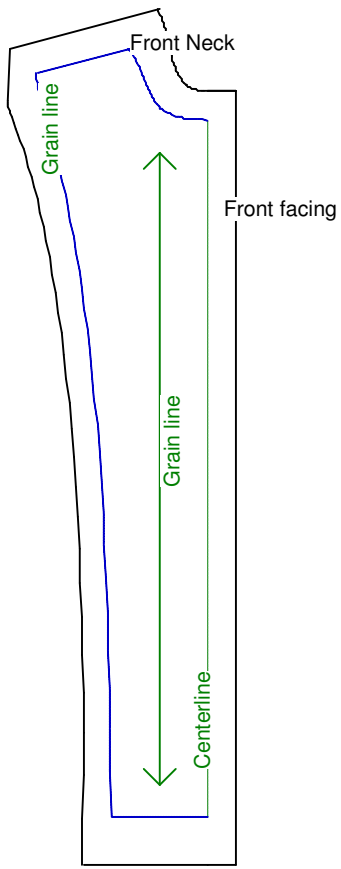
Using Doll Shop Deluxe

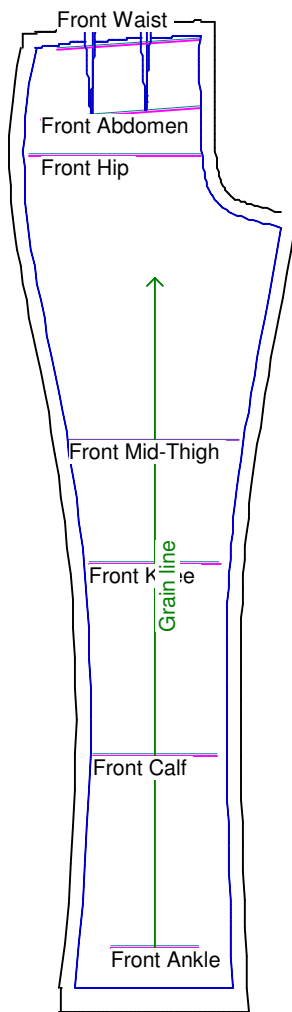
build 5.31 © 2005/2006 My Pattern Designer, LLC.

Sunday - August 20, 2006 9:10:41



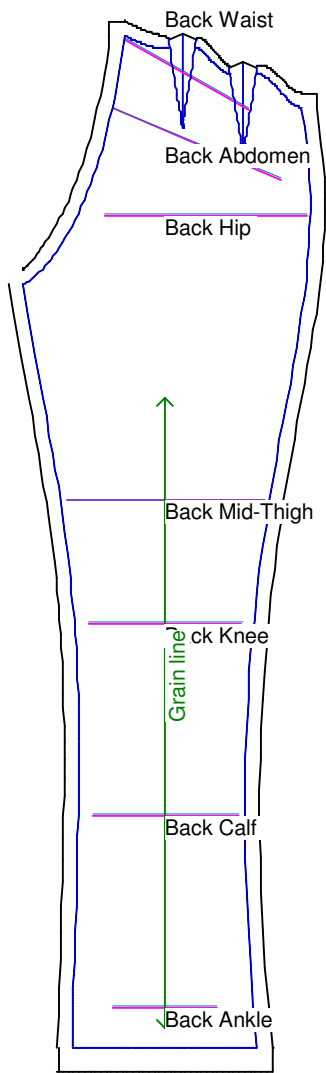
Bodice Sloper, Sleeve
Fabric width = 5"
Fabric height = 8"
Sleeve type: Straight No Dart
Sleeve length: full length
Scale = 100%
Custom designed using mnf1
Doll Shop Deluxe build 5.31 © 2005/2006 My Pattern Designer, LLC.
Sunday - August 20, 2006 9:10:41





Pants Sloper, Front Right

Custom designed using the mnf1 measurement set
Full length
Total fabric width = 5"
Total fabric height = 13"
Total paper height needed to print = 13"
Scale = 50%
Using Doll Shop Deluxe
build 5.31 © 2005/2006 My Pattern Designer, LLC.
Sunday - August 20, 2006 9:10:41



Pants Sloper, Back Right

Custom designed using the mnf1 measurement set

Full length

Total fabric width = 5"

Total fabric height = 14"

Total paper height needed to print = 14"

Scale = 50%

Using Doll Shop Deluxe

build 5.31 © 2005/2006 My Pattern Designer, LLC.

Sunday - August 20, 2006 9:10:41

Waistband
Cut each on fold

