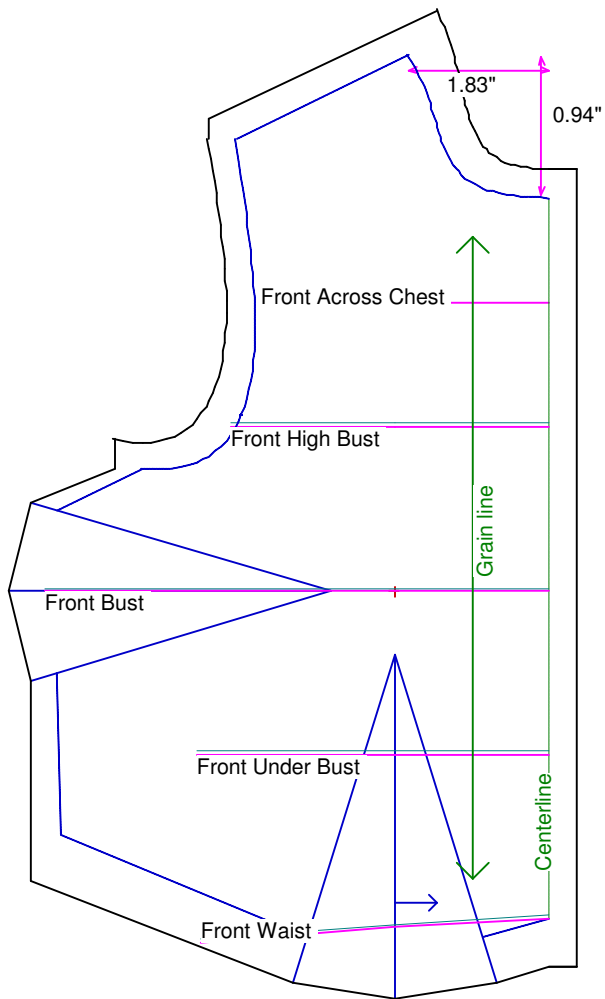


Neck Circumference	4 1/16	Shoulder Length	1
Shoulder Slope Front	4 3/8	Shoulder Slope Back	3 11/16
Across Shoulder Front	3 1/4	Across Shoulder Back	3 1/2
Across Chest	3	Across Back	3
Full Length Front	4 1/2	Full Length Back	3 3/4
Center Length Front	3 3/4	Center Length Back	3 1/4
Bust Front	5 1/4	Bust Back	3 1/2
Bust Depth	2 1/2	High Bust	3 5/16
Bust Radius	15/16	Under Bust Front	3 11/16
Bust Span	1 5/8	Side Length	1 3/4
Waist Front	3 5/8	Waist Back	2 5/8
High Waist Front	3 5/8	High Waist Back	2 5/8
High Waist Offset	5/8	Body Depth	3
Dress Waist Offset	0	Dart Center Offset	0
Armhole Depth	1 1/2	Overarm Length	6
Bicep	3 5/16	Elbow Bent	2 15/16
Wrist	1 3/4	Around Hand	2 1/2
Abdomen Depth	5/8	Elbow Depth	3 5/8
Abdomen Front	3 7/8	Abdomen Back	3 1/8
Hip Front	4 1/2	Hip Back	4 1/4
Crotch Length Front	3 3/4	Crotch Length Back	3 1/8
Inseam	8 3/4	Floor to Waist Side	11 1/2
Floor to Waist Front (conformed)	11 5/8	Floor to Waist Back (conformed)	11 5/8
Floor to Waist Front (straight)	11 5/8	Floor to Waist Back (straight)	11 5/8
Floor to Hip	9 3/8	Floor to Knee	5 1/4
Floor to Ankle	1	Knee Straight	3 5/8
Upper Thigh	4 7/8	Mid Thigh	5 1/8
Calf	3 1/8	Ankle	2 3/8
Ankle/Heel	3 1/4	Height	20
Around Head	9 13/16	Last saved on:	August 11 of 2006



Bodice Sloper, Front Right

NOTE: Cut 2 fronts and leave front opening unstitched to be pinned closed.

Custom designed using the Modern Cissy measurement set

Total fabric width = 4"

Total fabric height = 7"

Total paper height needed to print = 7"

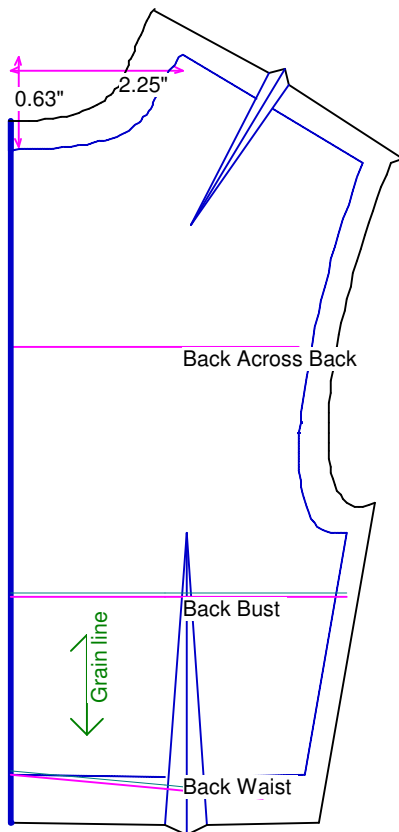
Neckline: jewel

Scale = 100%

Using Doll Shop Deluxe

build 5.31 © 2005/2006 My Pattern Designer, LLC.

Friday - August 11, 2006 8:34:26



Bodice Sloper, Back Right

Custom designed using the Modern Cissy measurement set

Total fabric width = 3"

Total fabric height = 6"

Total paper height needed to print = 6"

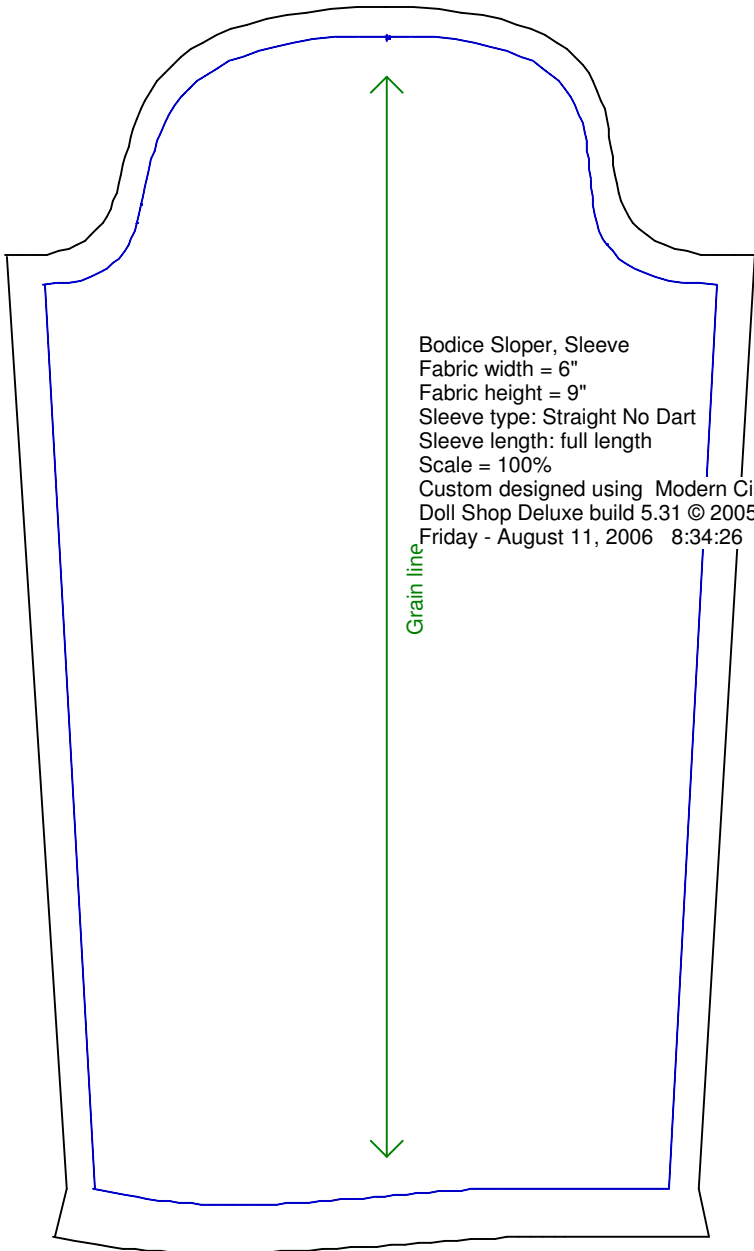
Neckline: jewel

Scale = 100%

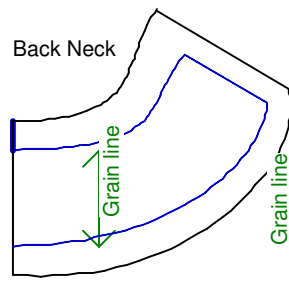
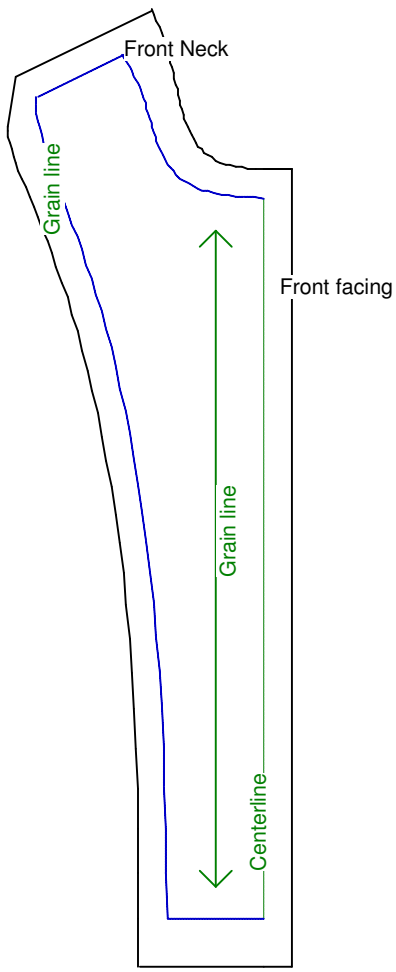
Using Doll Shop Deluxe

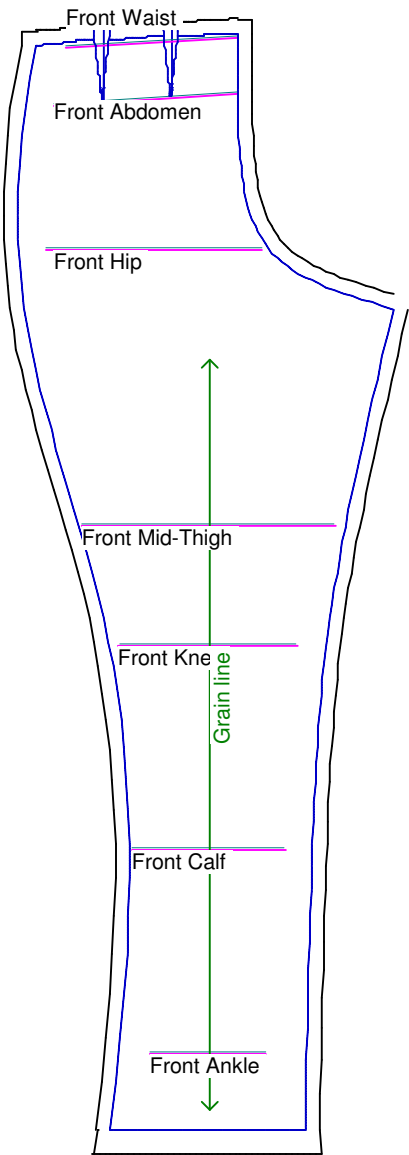
build 5.31 © 2005/2006 My Pattern Designer, LLC.

Friday - August 11, 2006 8:34:26



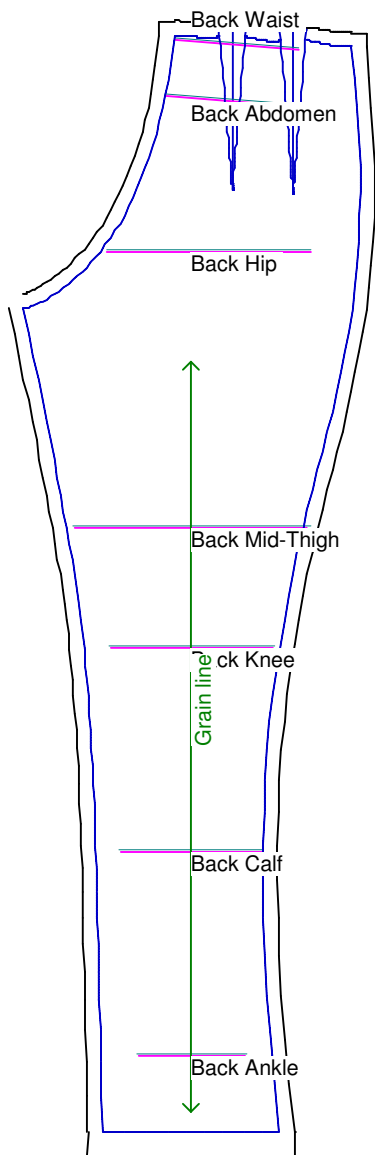
Bodice Sloper, Sleeve
Fabric width = 6"
Fabric height = 9"
Sleeve type: Straight No Dart
Sleeve length: full length
Scale = 100%
Custom designed using Modern Cissy
Doll Shop Deluxe build 5.31 © 2005/2006 My Pattern Designer, LLC.
Friday - August 11, 2006 8:34:26





Pants Sloper, Front Right

Custom designed using the Modern Cissy measurement set
Full length
Total fabric width = 7"
Total fabric height = 15"
Total paper height needed to print = 15"
Scale = 50%
Using Doll Shop Deluxe
build 5.31 © 2005/2006 My Pattern Designer, LLC.
Friday - August 11, 2006 8:34:26



Pants Sloper, Back Right

Custom designed using the Modern Cissy measurement set

Full length

Total fabric width = 6"

Total fabric height = 15"

Total paper height needed to print = 15"

Scale = 50%

Using Doll Shop Deluxe

build 5.31 © 2005/2006 My Pattern Designer, LLC.

Friday - August 11, 2006 8:34:26

Waistband
Cut each on fold

