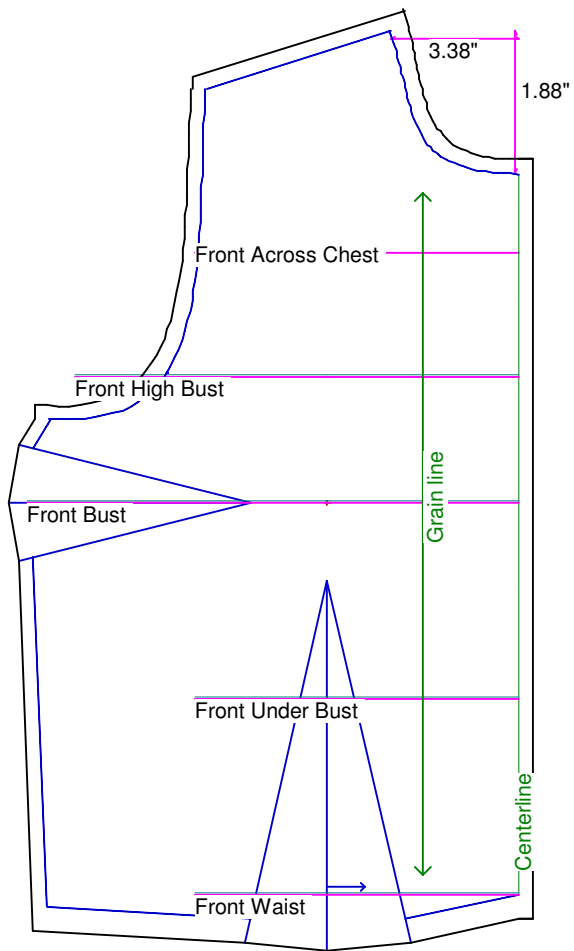


Neck Circumference	7	Shoulder Length	2
Shoulder Slope Front	9	Shoulder Slope Back	9
Across Shoulder Front	6 1/2	Across Shoulder Back	6 1/2
Across Chest	6 3/4	Across Back	6
Full Length Front	9	Full Length Back	8 1/4
Center Length Front	7 1/2	Center Length Back	8
Bust Front	10 1/4	Bust Back	8
Bust Depth	4 1/2	High Bust	9 1/4
Bust Radius	1 1/4	Under Bust Front	6 3/4
Bust Span	4	Side Length	4 1/2
Waist Front	6 3/4	Waist Back	5 1/2
High Waist Front	6 3/4	High Waist Back	5 1/2
High Waist Offset	2	Body Depth	3 5/16
Dress Waist Offset	0	Dart Center Offset	0
Armhole Depth	3	Overarm Length	12
Bicep	5 1/2	Elbow Bent	5
Wrist	3 1/4	Around Hand	4
Abdomen Depth	2	Elbow Depth	6
Abdomen Front	7 1/2	Abdomen Back	9 1/2
Hip Front	9 1/2	Hip Back	8 1/2
Crotch Length Front	6	Crotch Length Back	6
Inseam	18	Floor to Waist Side	23
Floor to Waist Front (conformed)	23	Floor to Waist Back (conformed)	23
Floor to Waist Front (straight)	23	Floor to Waist Back (straight)	23
Floor to Hip	20	Floor to Knee	10
Floor to Ankle	1	Knee Straight	6 3/4
Upper Thigh	10 1/2	Mid Thigh	10 1/4
Calf	7 1/4	Ankle	4 1/2
Ankle/Heel	6 1/2	Height	36 1/2
Around Head	13 1/4	Last saved on:	August 11 of 2006



Bodice Sloper, Front Right

NOTE: Cut 2 fronts and leave front opening unstitched to be pinned closed.

Custom designed using the My Size Barbie measurement set

Total fabric width = 7"

Total fabric height = 13"

Total paper height needed to print = 13"

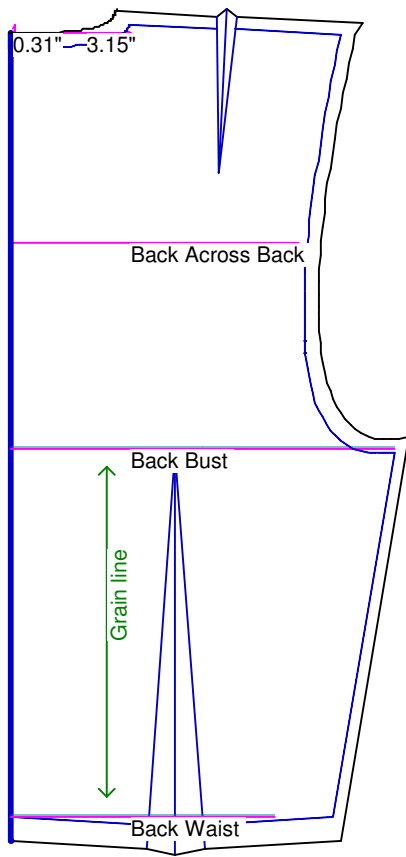
Neckline: jewel

Scale = 50%

Using Doll Shop Deluxe

build 5.31 © 2005/2006 My Pattern Designer, LLC.

Friday - August 11, 2006 8:51:54



Bodice Sloper, Back Right

Custom designed using the My Size Barbie measurement set

Total fabric width = 6"

Total fabric height = 12"

Total paper height needed to print = 12"

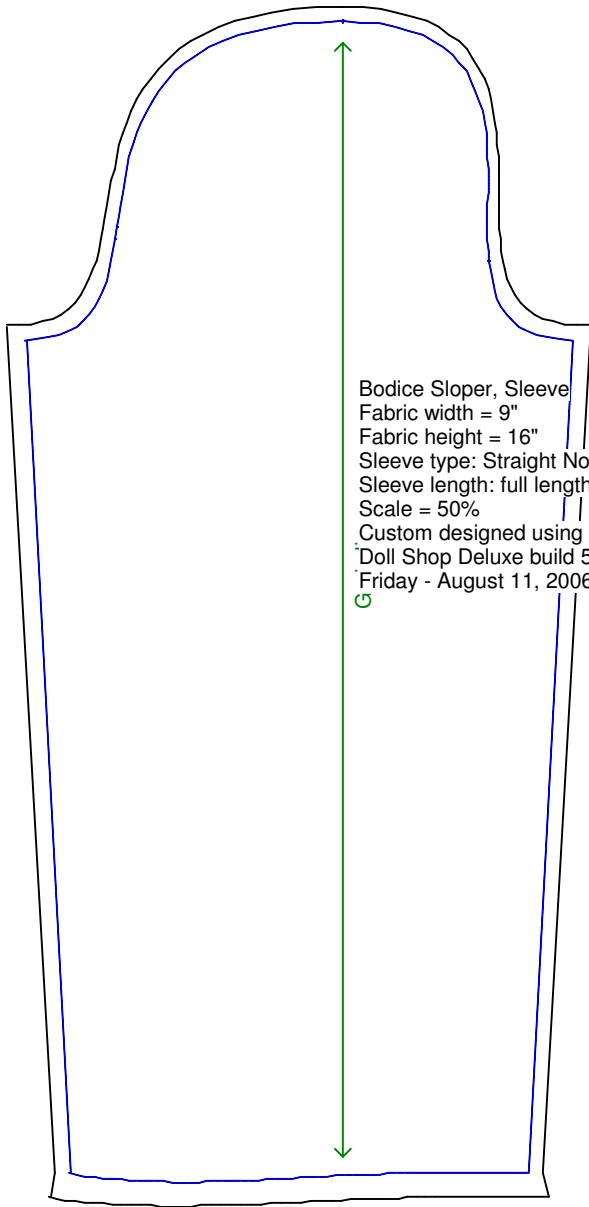
Neckline: jewel

Scale = 50%

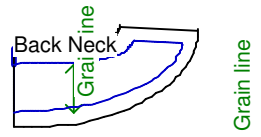
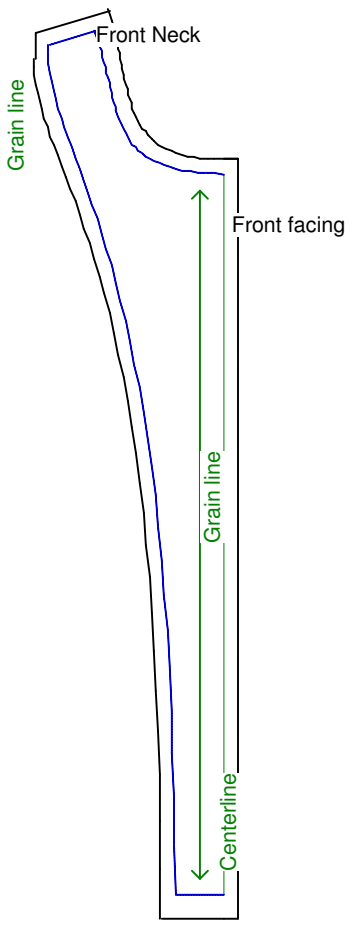
Using Doll Shop Deluxe

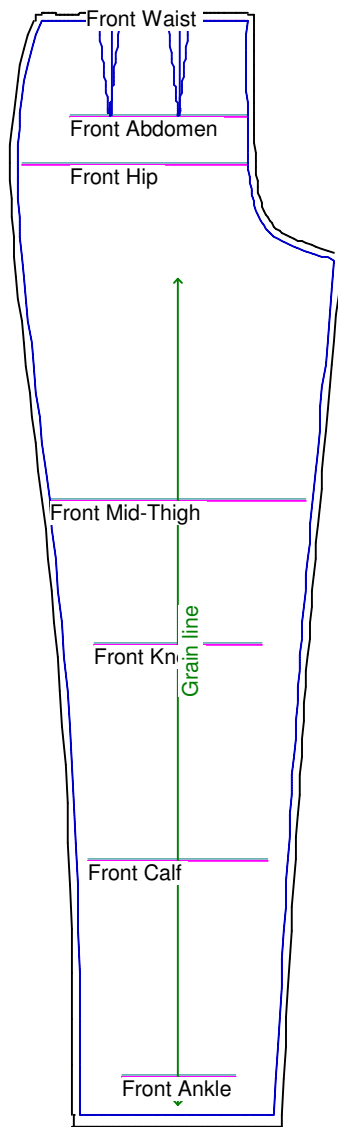
build 5.31 © 2005/2006 My Pattern Designer, LLC.

Friday - August 11, 2006 8:51:54



Bodice Sloper, Sleeve
Fabric width = 9"
Fabric height = 16"
Sleeve type: Straight No Dart
Sleeve length: full length
Scale = 50%
Custom designed using My Size Barbie
Doll Shop Deluxe build 5.31 © 2005/2006 My Pattern Designer, LLC.
Friday - August 11, 2006 8:51:54





Pants Sloper, Front Right

Custom designed using the My Size Barbie measurement set

Full length

Total fabric width = 10"

Total fabric height = 30"

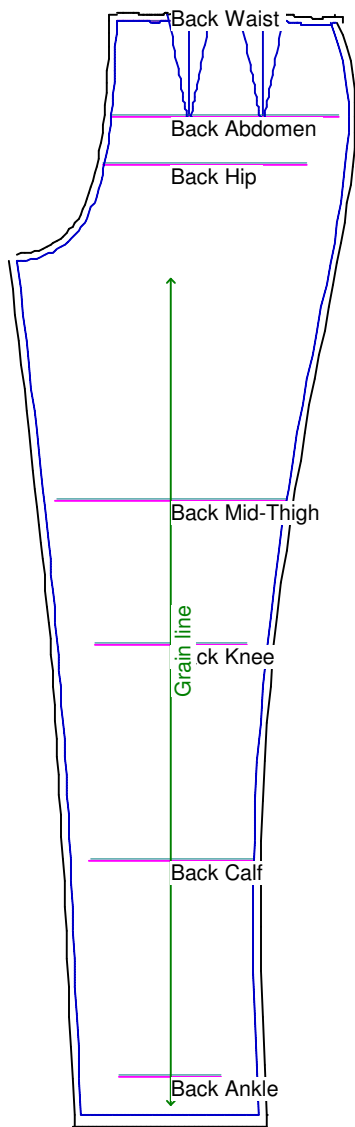
Total paper height needed to print = 30"

Scale = 25%

Using Doll Shop Deluxe

build 5.31 © 2005/2006 My Pattern Designer, LLC.

Friday - August 11, 2006 8:51:54



Pants Sloper, Back Right

Custom designed using the My Size Barbie measurement set

Full length

Total fabric width = 11"

Total fabric height = 30"

Total paper height needed to print = 30"

Scale = 25%

Using Doll Shop Deluxe

build 5.31 © 2005/2006 My Pattern Designer, LLC.

Friday - August 11, 2006 8:51:54

Waistband
Cut each on fold

