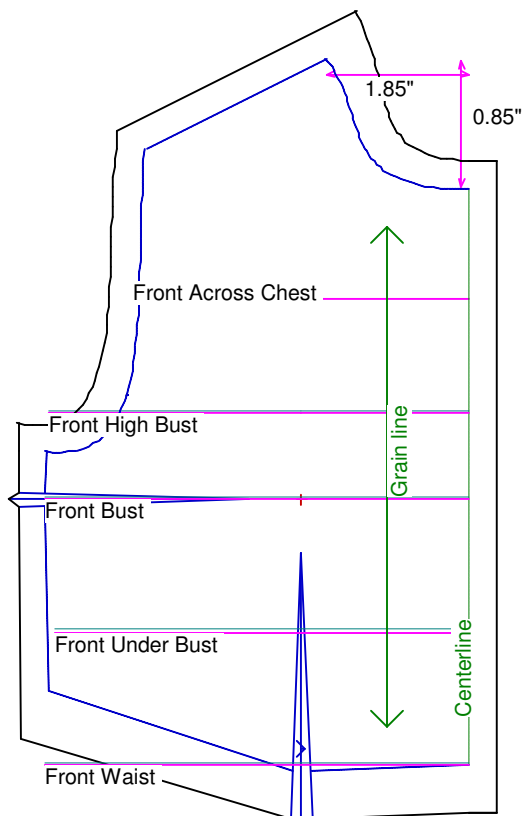


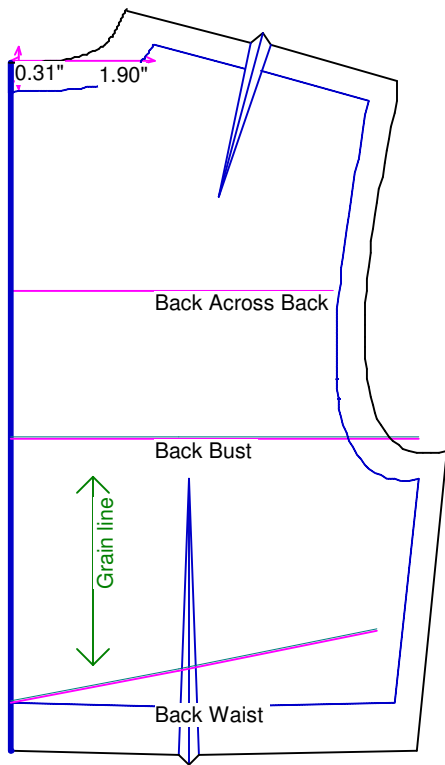
Neck Circumference	4	Shoulder Length	1 1/16
Shoulder Slope Front	3 5/8	Shoulder Slope Back	3 5/8
Across Shoulder Front	3 3/8	Across Shoulder Back	3 9/16
Across Chest	3 1/2	Across Back	3 3/8
Full Length Front	3 11/16	Full Length Back	3 7/16
Center Length Front	3	Center Length Back	3 3/16
Bust Front	4 7/16	Bust Back	4 1/4
Bust Depth	2	High Bust	4 3/8
Bust Radius	1/16	Under Bust Front	4 5/16
Bust Span	1 3/4	Side Length	1 3/8
Waist Front	4 7/16	Waist Back	3 13/16
High Waist Front	4 7/16	High Waist Back	3 13/16
High Waist Offset	1/2	Body Depth	3 1/2
Dress Waist Offset	0	Dart Center Offset	0
Armhole Depth	1 3/8	Overarm Length	5 7/8
Bicep	2 7/8	Elbow Bent	2 5/8
Wrist	1 15/16	Around Hand	2 7/8
Abdomen Depth	1/2	Elbow Depth	3 1/2
Abdomen Front	4 1/2	Abdomen Back	4 3/16
Hip Front	4 5/8	Hip Back	4 1/2
Crotch Length Front	3 1/2	Crotch Length Back	3 1/4
Inseam	6 3/4	Floor to Waist Side	9 1/4
Floor to Waist Front (conformed)	9 1/4	Floor to Waist Back (conformed)	8 7/8
Floor to Waist Front (straight)	9 1/4	Floor to Waist Back (straight)	8 7/8
Floor to Hip	8 1/4	Floor to Knee	4 1/2
Floor to Ankle	1 3/16	Knee Straight	4 5/8
Upper Thigh	4 5/8	Mid Thigh	4 15/16
Calf	4 1/8	Ankle	3
Ankle/Heel	4	Height	16 1/2
Around Head	9 5/8	Last saved on:	August 11 of 2006



Bodice Sloper, Front Right

NOTE: Cut 2 fronts and leave front opening unstitched to be pinned closed.
 Custom designed using the Sasha measurement set

Total fabric width = 4"
 Total fabric height = 6"
 Total paper height needed to print = 6"
 Neckline: jewel
 Scale = 100%
 Using Doll Shop Deluxe
 build 5.31 © 2005/2006 My Pattern Designer, LLC.
 Friday - August 11, 2006 9:00:36



Bodice Sloper, Back Right

Custom designed using the Sasha measurement set

Total fabric width = 3"

Total fabric height = 5"

Total paper height needed to print = 5"

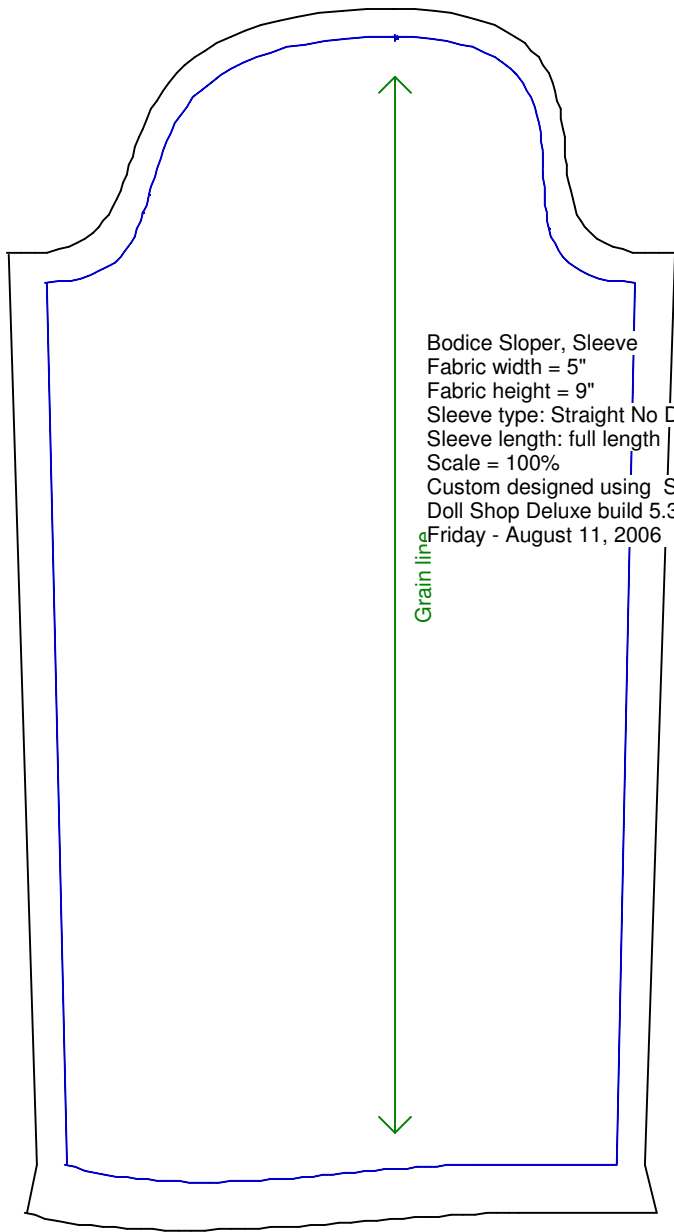
Neckline: jewel

Scale = 100%

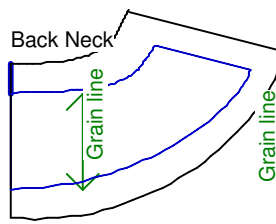
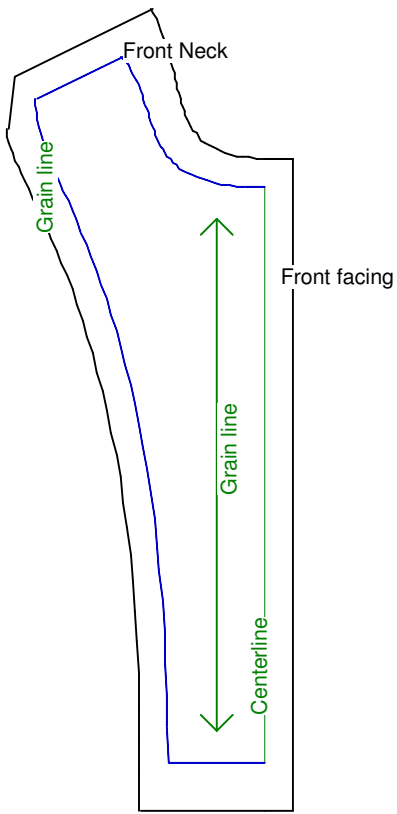
Using Doll Shop Deluxe

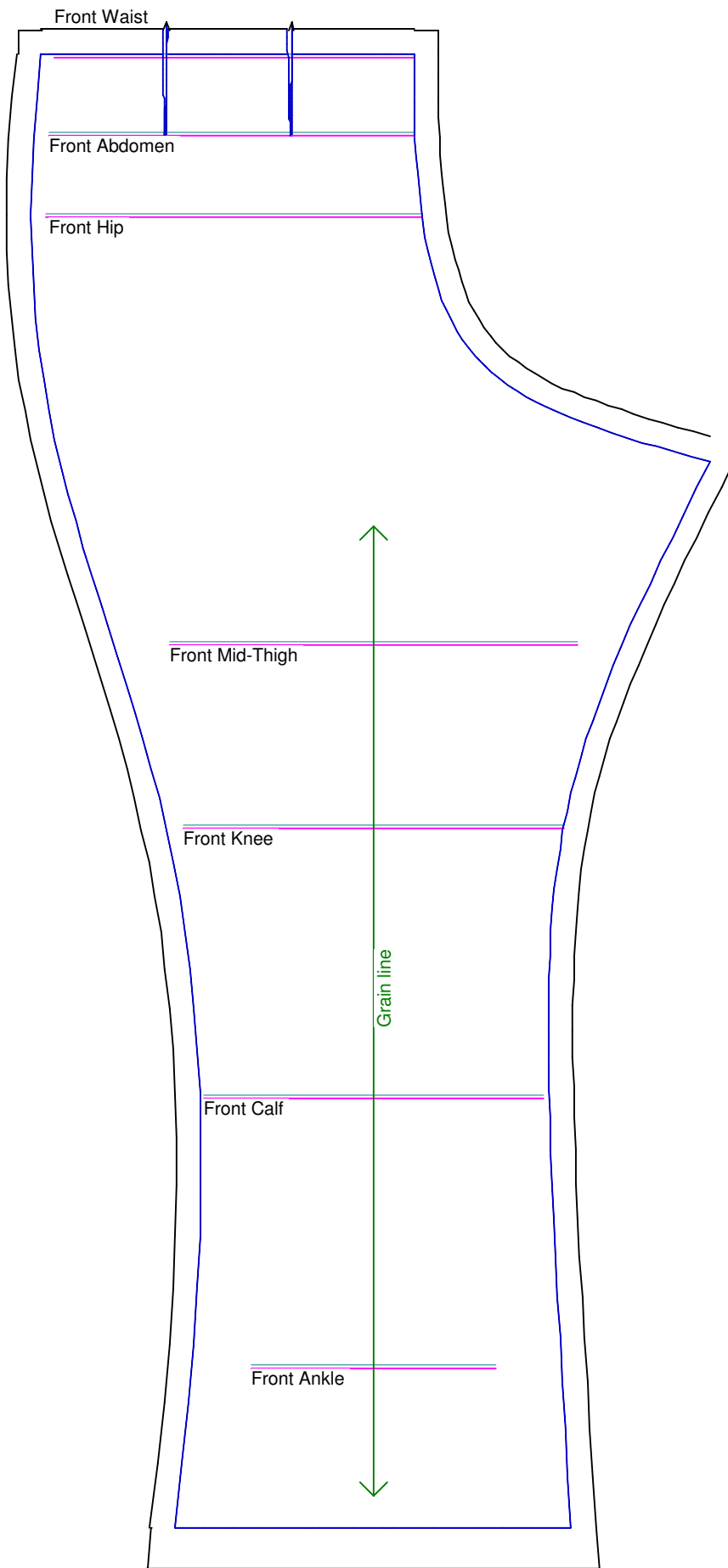
build 5.31 © 2005/2006 My Pattern Designer, LLC.

Friday - August 11, 2006 9:00:36



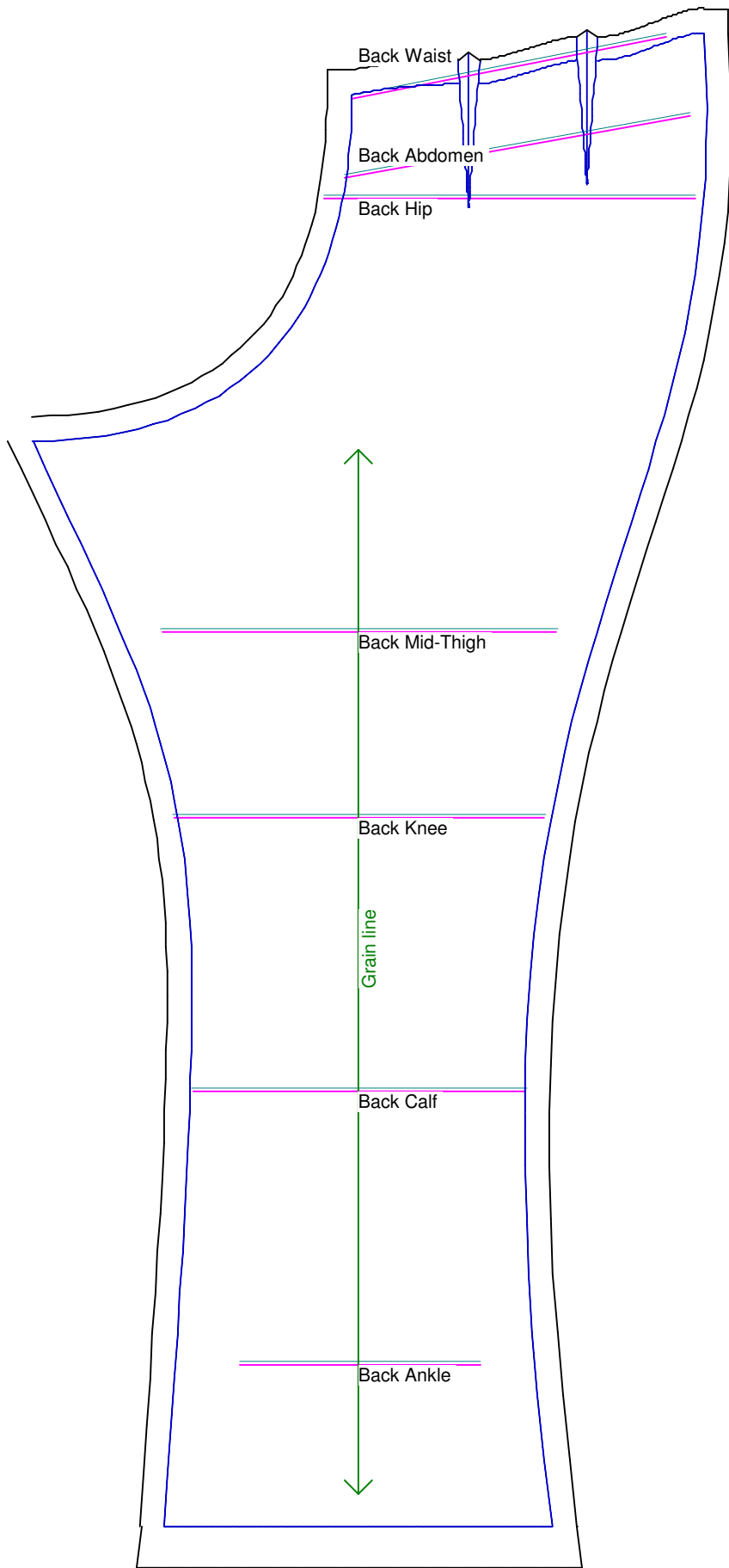
Bodice Sloper, Sleeve
Fabric width = 5"
Fabric height = 9"
Sleeve type: Straight No Dart
Sleeve length: full length
Scale = 100%
Custom designed using Sasha
Doll Shop Deluxe build 5.31 © 2005/2006 My Pattern Designer, LLC.
Friday - August 11, 2006 9:00:36





Pants Sloper, Front Right

Custom designed using the Sasha measurement set
 Full length
 Total fabric width = 7"
 Total fabric height = 12"
 Total paper height needed to print = 12"



Pants Sloper, Back Right

Custom designed using the Sasha measurement set

Full length

Total fabric width = 6"

Total fabric height = 12" Friday, August 11, 2006

Total paper height needed to print = 12"

Scale = 100%

Using Dell Scan Deluxe

Waistband
Cut each on fold

