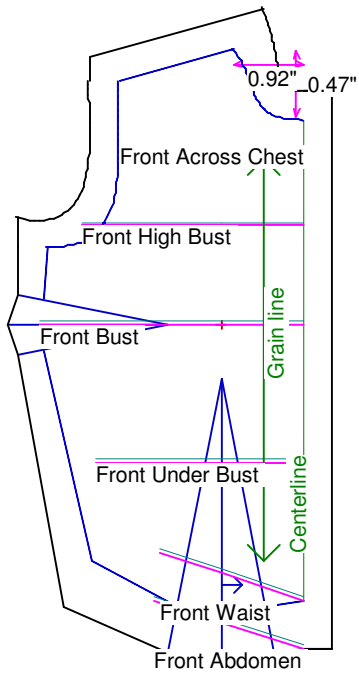


Neck Circumference	1 5/8	Shoulder Length	5/8
Shoulder Slope Front	2 7/8	Shoulder Slope Back	2 7/16
Across Shoulder Front	1 15/16	Across Shoulder Back	2
Across Chest	1 15/16	Across Back	1 15/16
Full Length Front	2 7/8	Full Length Back	2 7/16
Center Length Front	2 1/2	Center Length Back	2 1/4
Bust Front	2 3/4	Bust Back	2 9/16
Bust Depth	1 3/8	High Bust	2 5/16
Bust Radius	7/16	Under Bust Front	2 3/16
Bust Span	7/8	Side Length	1 1/2
Waist Front	1 1/2	Waist Back	1 1/2
High Waist Front	1 1/2	High Waist Back	1 1/2
High Waist Offset	1/4	Body Depth	15/16
Dress Waist Offset	0	Dart Center Offset	0
Armhole Depth	3/4	Overarm Length	3 9/16
Bicep	1 7/16	Elbow Bent	1 5/16
Wrist	13/16	Around Hand	1 1/4
Abdomen Depth	1/4	Elbow Depth	2
Abdomen Front	1 9/16	Abdomen Back	1 1/2
Hip Front	2 5/16	Hip Back	2 11/16
Crotch Length Front	1 3/8	Crotch Length Back	1 11/16
Inseam	5 3/4	Floor to Waist Side	7 1/4
Floor to Waist Front (conformed)	7	Floor to Waist Back (conformed)	7
Floor to Waist Front (straight)	7	Floor to Waist Back (straight)	7
Floor to Hip	6 1/2	Floor to Knee	3
Floor to Ankle	1/2	Knee Straight	1 15/16
Upper Thigh	2 7/8	Mid Thigh	1 3/4
Calf	2 1/16	Ankle	1
Ankle/Heel	7/8	Height	11 1/2
Around Head	4 1/4	Last saved on:	August 11 of 2006



Bodice Sloper, Front Right

NOTE: Cut 2 fronts and leave front opening unstitched to be pinned closed.

Custom designed using the Silkstone Barbie measurement set

Total fabric width = 3"

Total fabric height = 5"

Total paper height needed to print = 5"

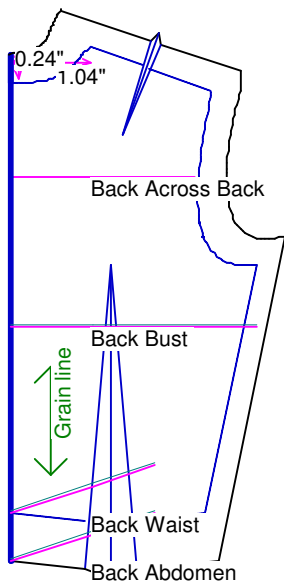
Neckline: jewel

Scale = 100%

Using Doll Shop Deluxe

build 5.31 © 2005/2006 My Pattern Designer, LLC.

Friday - August 11, 2006 9:02:24



Bodice Sloper, Back Right

Custom designed using the Silkstone Barbie measurement set

Total fabric width = 2"

Total fabric height = 4"

Total paper height needed to print = 4"

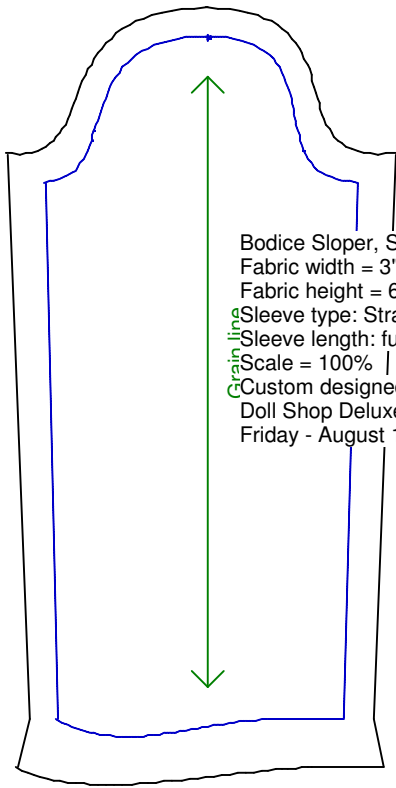
Neckline: jewel

Scale = 100%

Using Doll Shop Deluxe

build 5.31 © 2005/2006 My Pattern Designer, LLC.

Friday - August 11, 2006 9:02:24



Bodice Sloper, Sleeve

Fabric width = 3"

Fabric height = 6"

Sleeve type: Straight No Dart

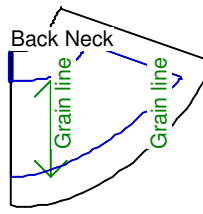
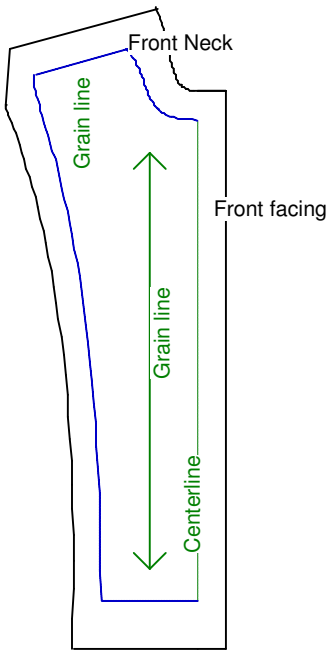
Sleeve length: full length

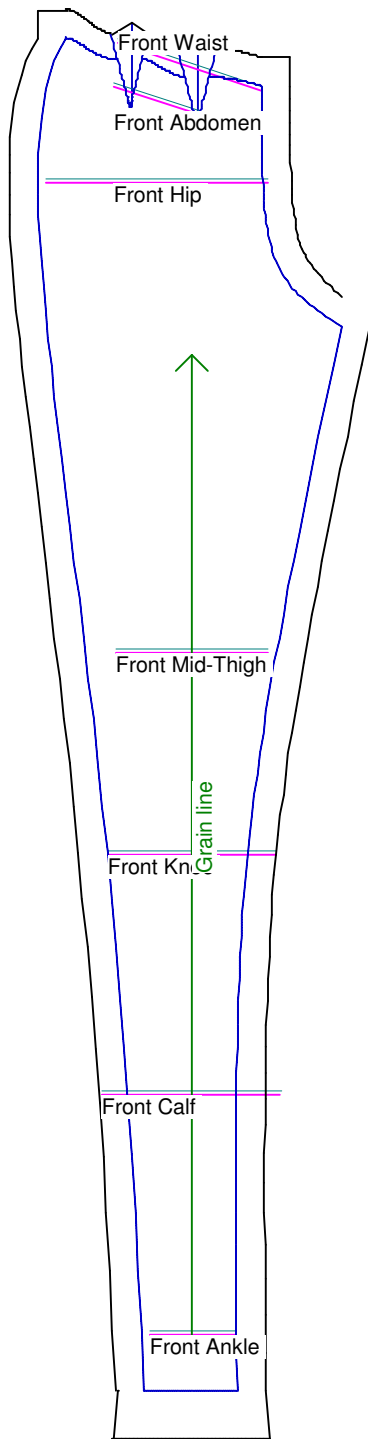
Scale = 100% |

Custom designed using Silkstone Barbie

Doll Shop Deluxe build 5.31 © 2005/2006 My Pattern Designer, LLC.

Friday - August 11, 2006 9:02:24





Pants Sloper, Front Right

Custom designed using the Silkstone Barbie measurement set

Full length

Total fabric width = 3"

Total fabric height = 10"

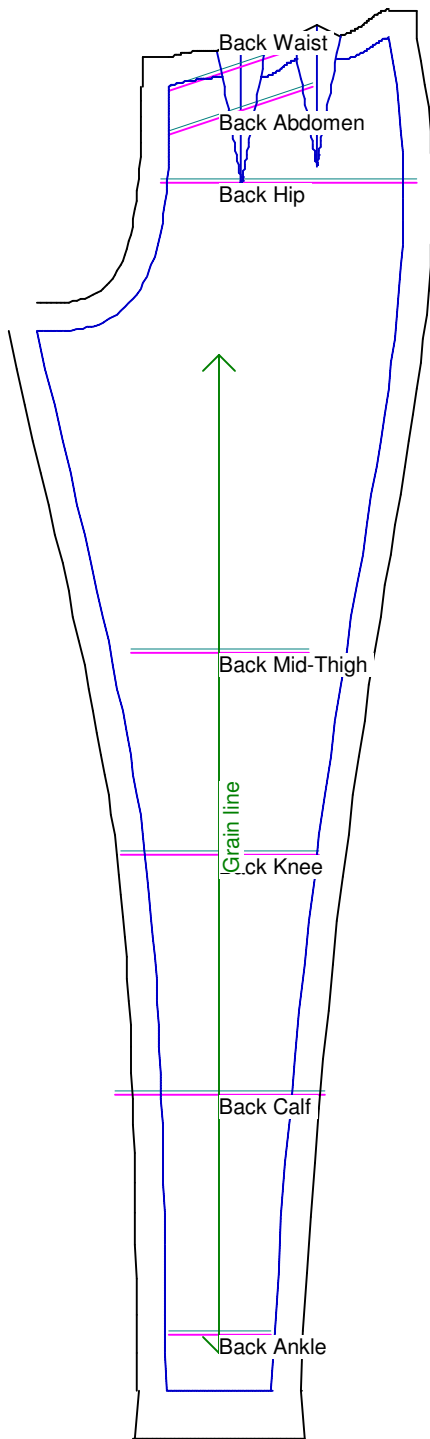
Total paper height needed to print = 10"

Scale = 100%

Using Doll Shop Deluxe

build 5.31 © 2005/2006 My Pattern Designer, LLC.

Friday - August 11, 2006 9:02:24



Pants Sloper, Back Right

Custom designed using the Silkstone Barbie measurement set

Full length

Total fabric width = 4"

Total fabric height = 10"

Total paper height needed to print = 10"

Scale = 100%

Using Doll Shop Deluxe

build 5.31 © 2005/2006 My Pattern Designer, LLC.

Friday - August 11, 2006 9:02:24

Waistband
Cut each on fold

