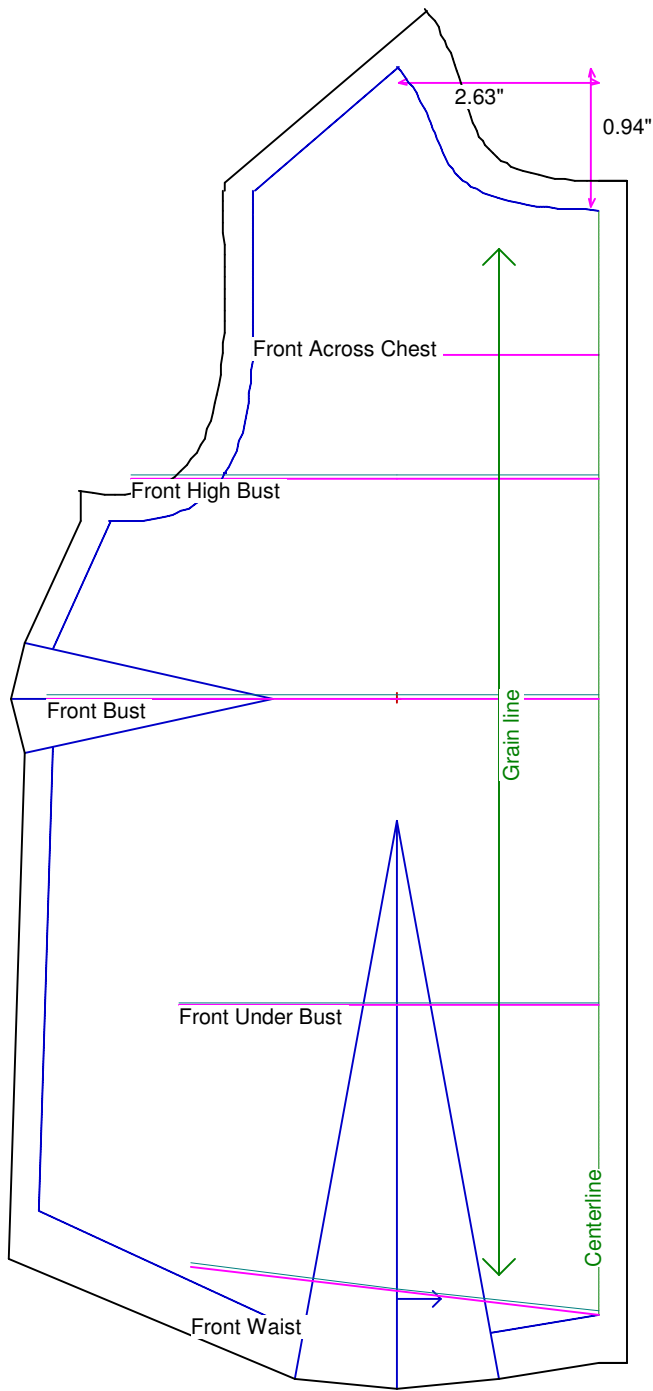


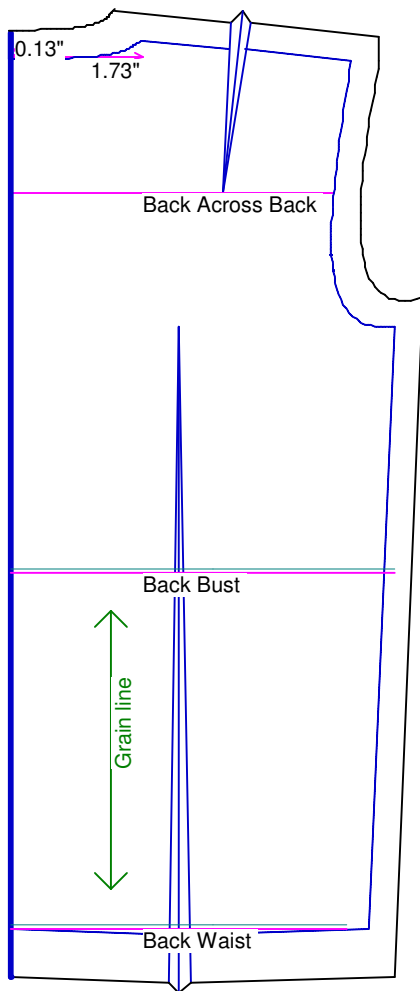
Neck Circumference	3 3/4	Shoulder Length	1
Shoulder Slope Front	6 1/8	Shoulder Slope Back	5 1/8
Across Shoulder Front	3 5/8	Across Shoulder Back	3 3/8
Across Chest	3 5/8	Across Back	3 3/8
Full Length Front	6 1/2	Full Length Back	4 5/8
Center Length Front	5 3/4	Center Length Back	4 5/8
Bust Front	5 3/4	Bust Back	4
Bust Depth	2 3/4	High Bust	4 7/8
Bust Radius	7/8	Under Bust Front	4 3/8
Bust Span	2 1/8	Side Length	3 3/8
Waist Front	4 1/4	Waist Back	3 1/2
High Waist Front	4	High Waist Back	3 1/2
High Waist Offset	1	Body Depth	2 3/8
Dress Waist Offset	0	Dart Center Offset	0
Armhole Depth	1 1/2	Overarm Length	7 7/8
Bicep	2 7/8	Elbow Bent	3
Wrist	2 1/4	Around Hand	3 1/8
Abdomen Depth	1	Elbow Depth	4 1/8
Abdomen Front	4 3/4	Abdomen Back	4 3/4
Hip Front	5 3/8	Hip Back	5 1/4
Crotch Length Front	3 3/4	Crotch Length Back	4 1/8
Inseam	11	Floor to Waist Side	14 1/2
Floor to Waist Front (conformed)	14 1/8	Floor to Waist Back (conformed)	14 3/4
Floor to Waist Front (straight)	14 1/4	Floor to Waist Back (straight)	14 1/2
Floor to Hip	12 1/4	Floor to Knee	6 5/8
Floor to Ankle	7/8	Knee Straight	4
Upper Thigh	6 1/2	Mid Thigh	5 3/4
Calf	4 1/8	Ankle	2 7/8
Ankle/Heel	4 1/4	Height	23 1/4
Around Head	8 1/8	Last saved on:	August 20 of 2006



Bodice Sloper, Front Right

NOTE: Cut 2 fronts and leave front opening unstitched to be pinned closed.
 Custom designed using the soah1 measurement set

Total fabric width = 5"
 Total fabric height = 9"
 Total paper height needed to print = 10"
 Neckline: jewel
 Scale = 100%
 Using Doll Shop Deluxe
 build 5.31 © 2005/2006 My Pattern Designer, LLC.
 Sunday - August 20, 2006 8:56:29



Bodice Sloper, Back Right

Custom designed using the soah1 measurement set

Total fabric width = 3"

Total fabric height = 7"

Total paper height needed to print = 7"

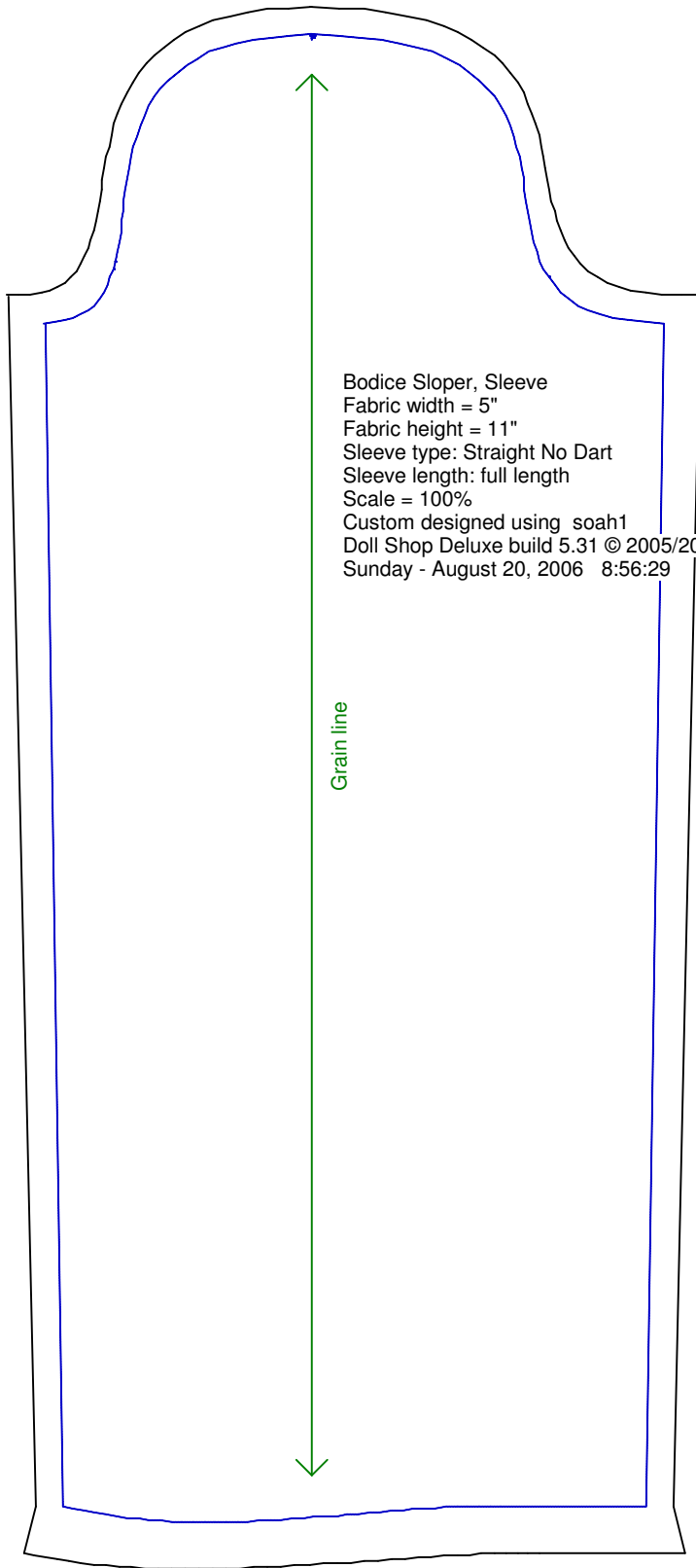
Neckline: jewel

Scale = 100%

Using Doll Shop Deluxe

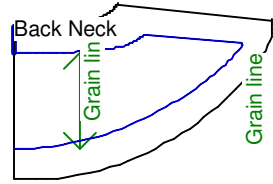
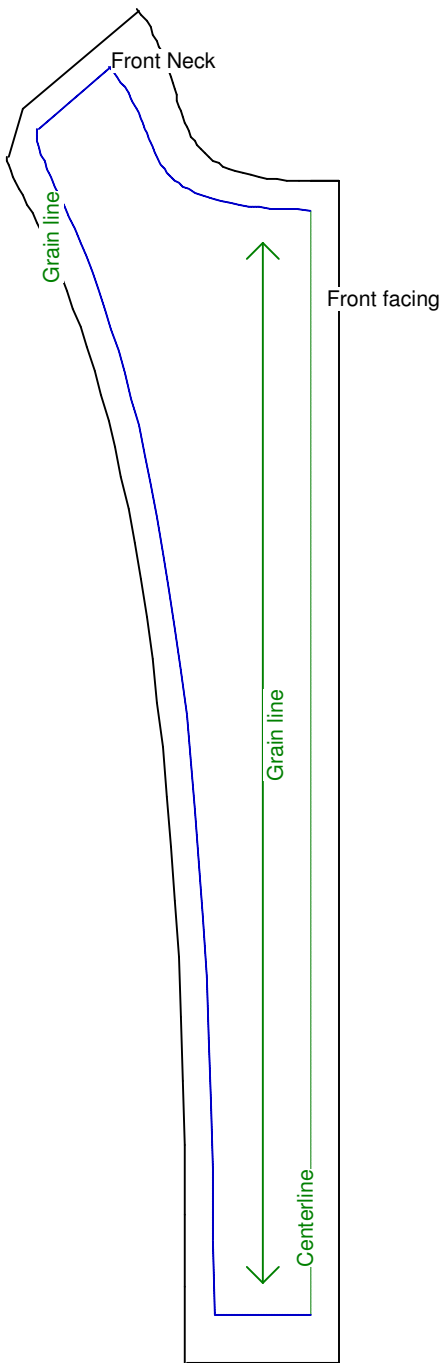
build 5.31 © 2005/2006 My Pattern Designer, LLC.

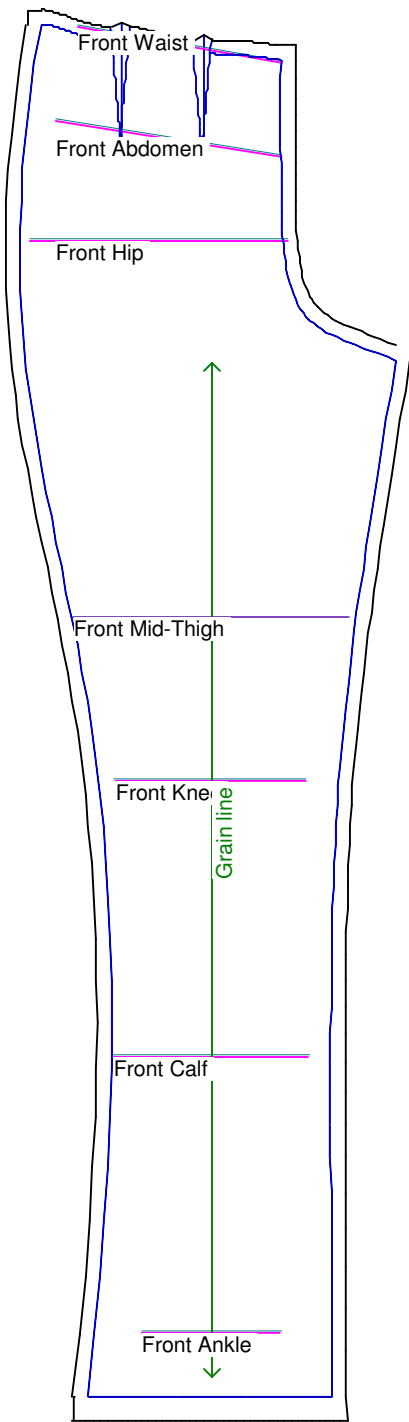
Sunday - August 20, 2006 8:56:29



Bodice Sloper, Sleeve
Fabric width = 5"
Fabric height = 11"
Sleeve type: Straight No Dart
Sleeve length: full length
Scale = 100%
Custom designed using soah1
Doll Shop Deluxe build 5.31 © 2005/2006 My Pattern Designer, LLC.
Sunday - August 20, 2006 8:56:29

Grain line





Pants Sloper, Front Right

Custom designed using the soah1 measurement set

Full length

Total fabric width = 7"

Total fabric height = 19"

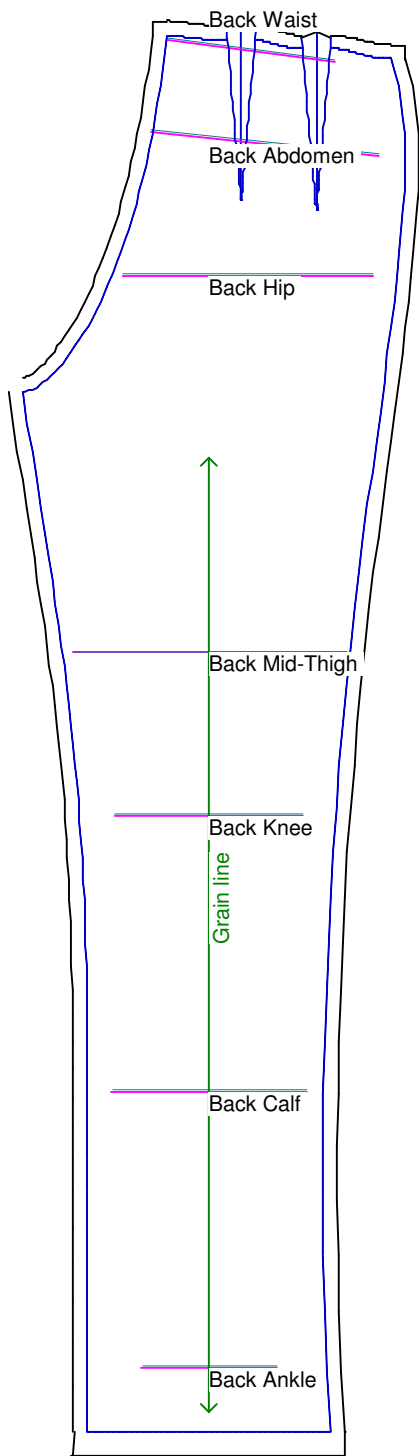
Total paper height needed to print = 19"

Scale = 50%

Using Doll Shop Deluxe

build 5.31 © 2005/2006 My Pattern Designer, LLC.

Sunday - August 20, 2006 8:58:11



Pants Sloper, Back Right

Custom designed using the soah1 measurement set

Full length

Total fabric width = 6"

Total fabric height = 19"

Total paper height needed to print = 19"

Scale = 50%

Using Doll Shop Deluxe

build 5.31 © 2005/2006 My Pattern Designer, LLC.

Sunday - August 20, 2006 8:58:11

Waistband
Cut each on fold

