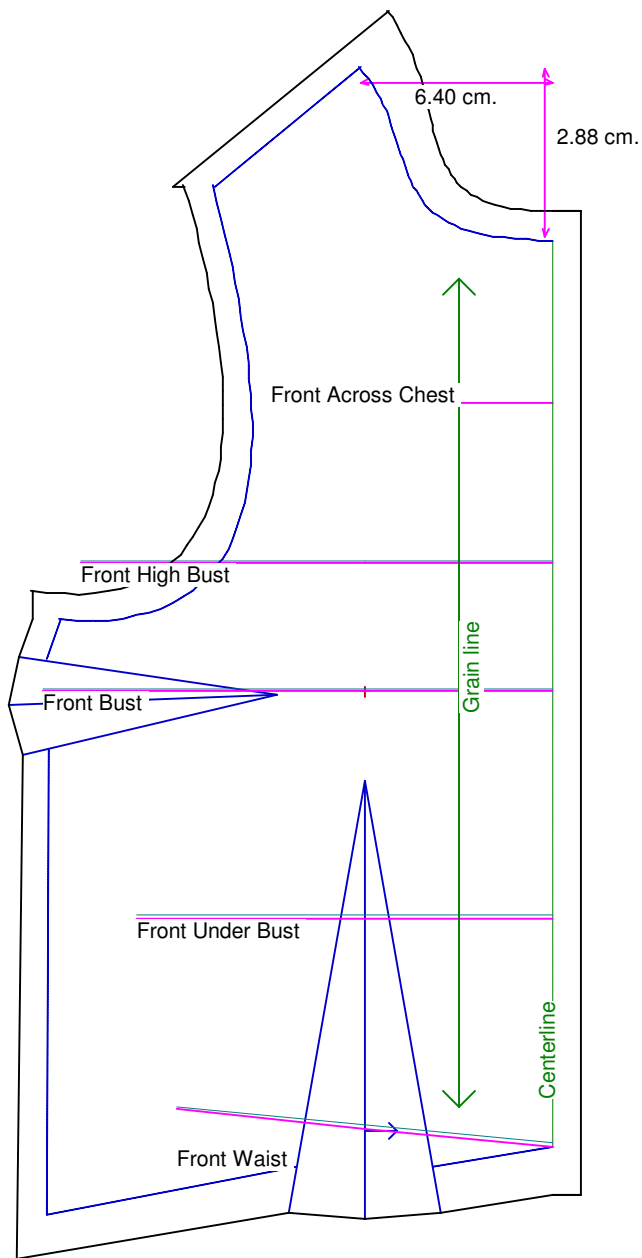


<b>Neck Circumference</b>	10	<b>Shoulder Length</b>	2.5
<b>Shoulder Slope Front</b>	13.5	<b>Shoulder Slope Back</b>	12
<b>Across Shoulder Front</b>	9	<b>Across Shoulder Back</b>	9
<b>Across Chest</b>	7.5	<b>Across Back</b>	7.5
<b>Full Length Front</b>	14.29	<b>Full Length Back</b>	12
<b>Center Length Front</b>	12	<b>Center Length Back</b>	12
<b>Bust Front</b>	13.5	<b>Bust Back</b>	10
<b>Bust Depth</b>	7	<b>High Bust</b>	12.5
<b>Bust Radius</b>	2	<b>Under Bust Front</b>	11
<b>Bust Span</b>	5	<b>Side Length</b>	7.5
<b>Waist Front</b>	10	<b>Waist Back</b>	10
<b>High Waist Front</b>	10	<b>High Waist Back</b>	10
<b>High Waist Offset</b>	4	<b>Body Depth</b>	6.5
<b>Dress Waist Offset</b>	1.27	<b>Dart Center Offset</b>	0
<b>Armhole Depth</b>	5	<b>Overarm Length</b>	20
<b>Bicep</b>	7.5	<b>Elbow Bent</b>	8
<b>Wrist</b>	5.5	<b>Around Hand</b>	7.5
<b>Abdomen Depth</b>	2.5	<b>Elbow Depth</b>	11.5
<b>Abdomen Front</b>	12	<b>Abdomen Back</b>	11
<b>Hip Front</b>	12	<b>Hip Back</b>	14
<b>Crotch Length Front</b>	10	<b>Crotch Length Back</b>	10
<b>Inseam</b>	27.5	<b>Floor to Waist Side</b>	36
<b>Floor to Waist Front (conformed)</b>	36	<b>Floor to Waist Back (conformed)</b>	35
<b>Floor to Waist Front (straight)</b>	35.5	<b>Floor to Waist Back (straight)</b>	35
<b>Floor to Hip</b>	32.5	<b>Floor to Knee</b>	14
<b>Floor to Ankle</b>	2.5	<b>Knee Straight</b>	10
<b>Upper Thigh</b>	16	<b>Mid Thigh</b>	14.5
<b>Calf</b>	10	<b>Ankle</b>	8
<b>Ankle/Heel</b>	10	<b>Height</b>	60
<b>Around Head</b>	23	<b>Last saved on:</b>	October 5 of 2006



## Bodice Sloper, Front Right

**NOTE:** Cut 2 fronts and leave front opening unstitched to be pinned closed.

Custom designed using the sooahsb measurement set

Total fabric width = 10 cm.

Total fabric height = 21 cm.

Total paper height needed to print = 21 cm.

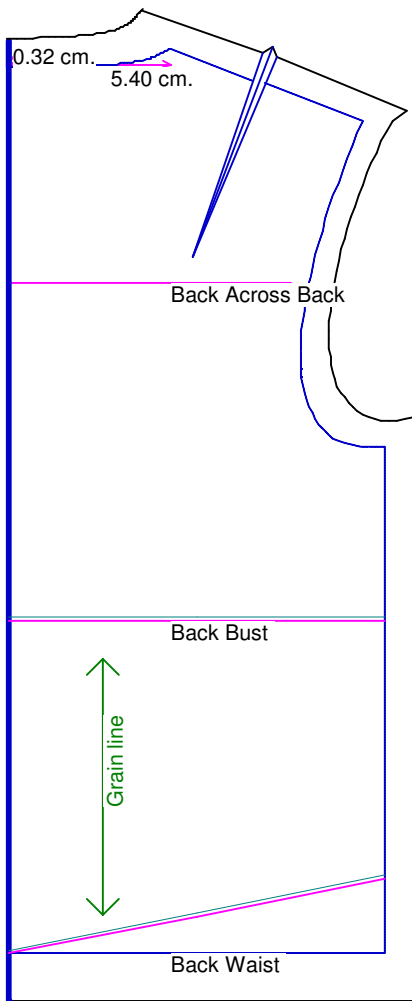
Neckline: jewel

Scale = 100%

Using Doll Shop Deluxe

build 5.31 © 2005/2006 My Pattern Designer, LLC.

Thursday - October 5, 2006 7:45:25



## Bodice Sloper, Back Right

Custom designed using the sooahsb measurement set

Total fabric width = 7 cm.

Total fabric height = 17 cm.

Total paper height needed to print = 17 cm.

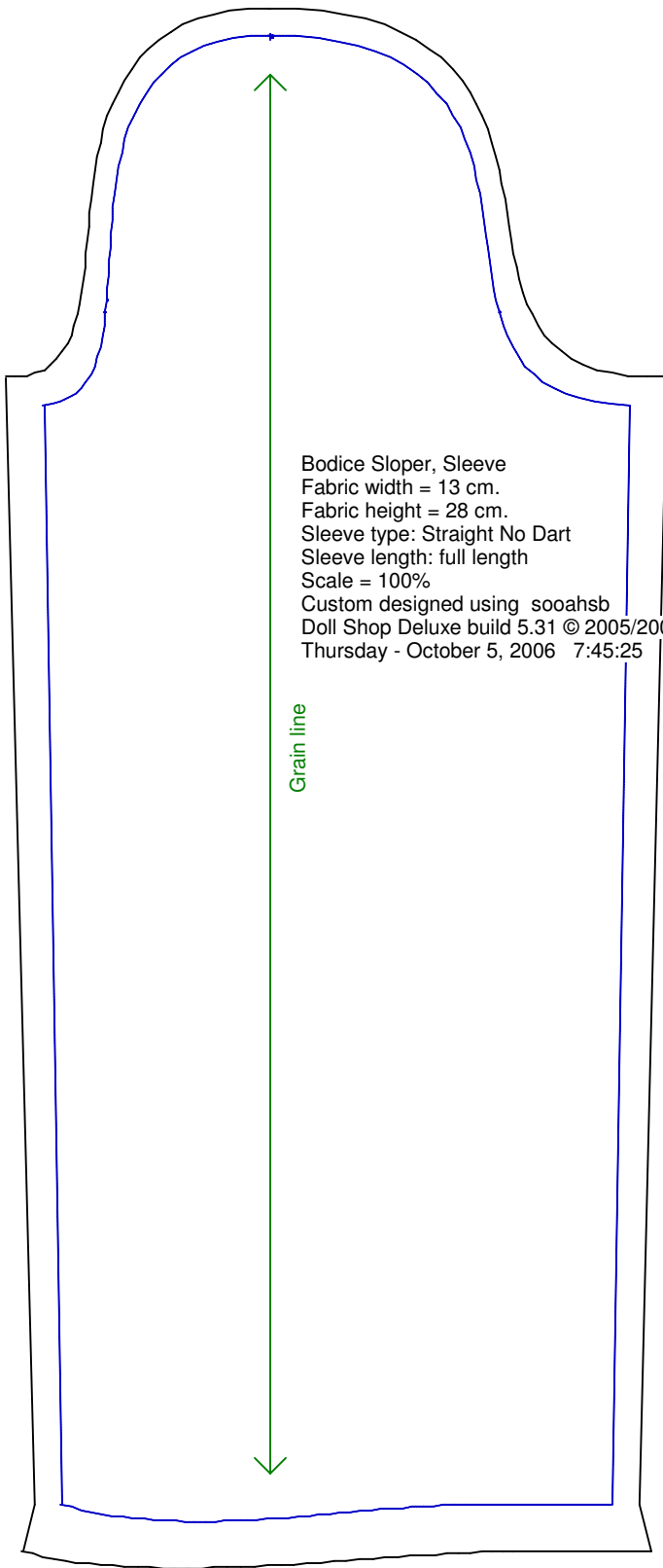
Neckline: jewel

Scale = 100%

Using Doll Shop Deluxe

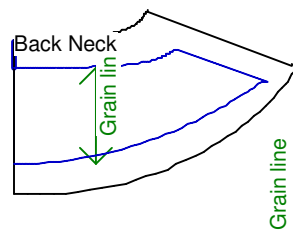
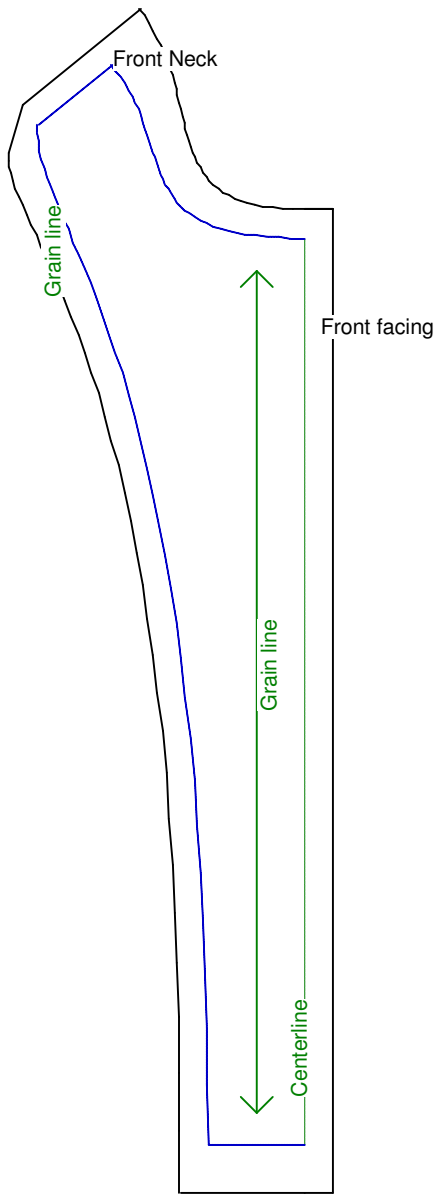
build 5.31 © 2005/2006 My Pattern Designer, LLC.

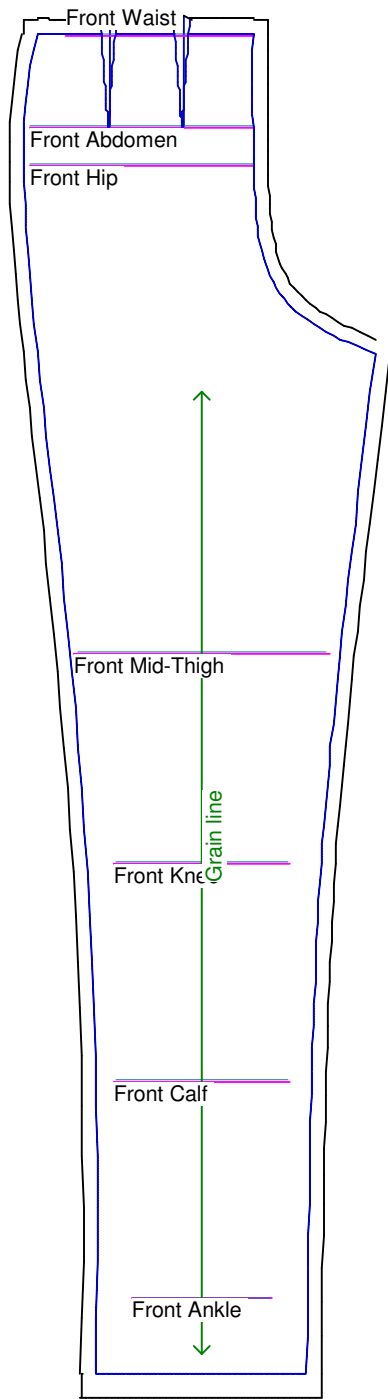
Thursday - October 5, 2006 7:45:25



Bodice Sloper, Sleeve  
Fabric width = 13 cm.  
Fabric height = 28 cm.  
Sleeve type: Straight No Dart  
Sleeve length: full length  
Scale = 100%  
Custom designed using sooahsb  
Doll Shop Deluxe build 5.31 © 2005/2006 My Pattern Designer, LLC.  
Thursday - October 5, 2006 7:45:25

Grain line





## Pants Sloper, Front Right

Custom designed using the soahsb measurement set

Full length

Total fabric width = 14 cm.

Total fabric height = 46 cm.

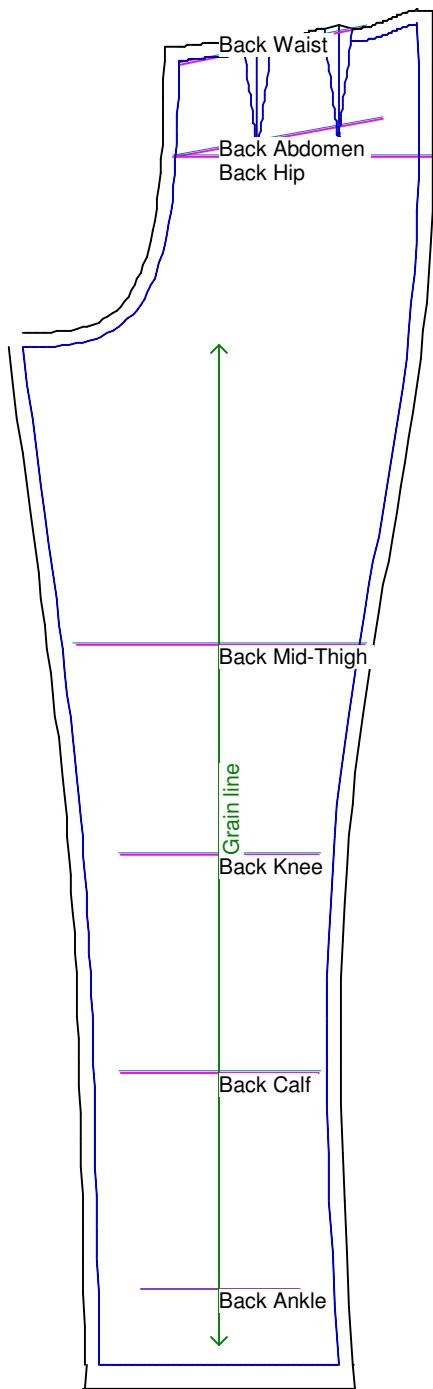
Total paper height needed to print = 46 cm.

Scale = 50%

Using Doll Shop Deluxe

build 5.31 © 2005/2006 My Pattern Designer, LLC.

Thursday - October 5, 2006 7:45:25



## Pants Sloper, Back Right

Custom designed using the soahsb measurement set

Full length

Total fabric width = 15 cm.

Total fabric height = 46 cm.

Total paper height needed to print = 46 cm.

Scale = 50%

Using Doll Shop Deluxe

build 5.31 © 2005/2006 My Pattern Designer, LLC.

Thursday - October 5, 2006 7:45:25

Waistband  
Cut each on fold

