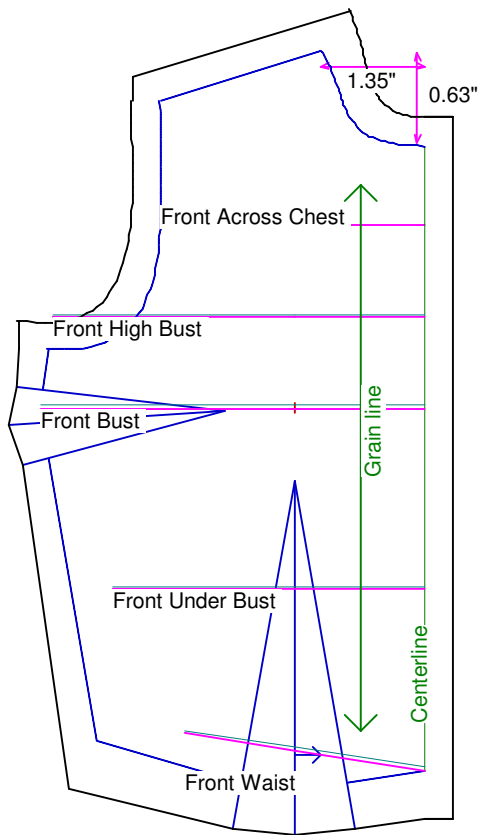


Neck Circumference	2 5/8	Shoulder Length	7/8
Shoulder Slope Front	3 3/4	Shoulder Slope Back	3 1/2
Across Shoulder Front	2 3/4	Across Shoulder Back	2 13/16
Across Chest	2 3/4	Across Back	2 5/8
Full Length Front	3 3/4	Full Length Back	3 1/2
Center Length Front	3 1/4	Center Length Back	3 5/16
Bust Front	4	Bust Back	3 1/2
Bust Depth	1 3/4	High Bust	3 7/8
Bust Radius	5/8	Under Bust Front	3 1/4
Bust Span	1 3/8	Side Length	1 7/8
Waist Front	2 1/2	Waist Back	2
High Waist Front	2 1/2	High Waist Back	2
High Waist Offset	1/2	Body Depth	2 1/8
Dress Waist Offset	0	Dart Center Offset	0
Armhole Depth	1 1/8	Overarm Length	5
Bicep	1 7/8	Elbow Bent	1 5/8
Wrist	1 3/16	Around Hand	1 7/8
Abdomen Depth	1/2	Elbow Depth	2 3/4
Abdomen Front	2 7/8	Abdomen Back	2 5/8
Hip Front	3 3/8	Hip Back	3 5/8
Crotch Length Front	2 3/4	Crotch Length Back	2 11/16
Inseam	7 1/4	Floor to Waist Side	9 3/4
Floor to Waist Front (conformed)	9 9/16	Floor to Waist Back (conformed)	9 3/4
Floor to Waist Front (straight)	9 9/16	Floor to Waist Back (straight)	9 3/4
Floor to Hip	8 5/16	Floor to Knee	4 1/16
Floor to Ankle	11/16	Knee Straight	2 1/8
Upper Thigh	3 7/8	Mid Thigh	3 3/4
Calf	2 11/16	Ankle	1 1/2
Ankle/Heel	2 1/4	Height	16
Around Head	5 1/4	Last saved on:	August 11 of 2006



Bodice Sloper, Front Right

NOTE: Cut 2 fronts and leave front opening unstitched to be pinned closed.

Custom designed using the Tyler Wentworth measurement set

Total fabric width = 3"

Total fabric height = 6"

Total paper height needed to print = 6"

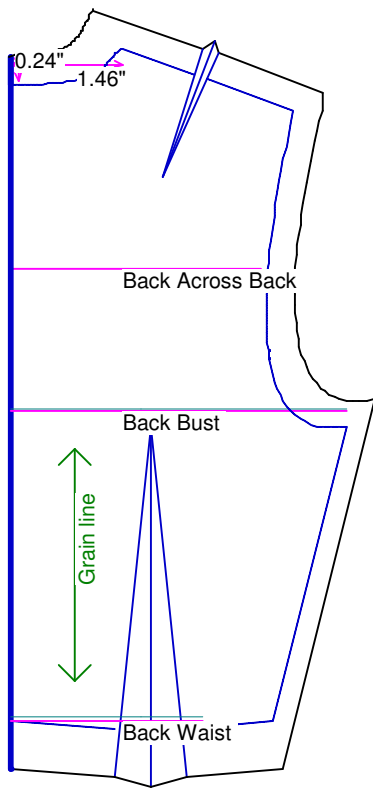
Neckline: jewel

Scale = 100%

Using Doll Shop Deluxe

build 5.31 © 2005/2006 My Pattern Designer, LLC.

Friday - August 11, 2006 9:07:52



Bodice Sloper, Back Right

Custom designed using the Tyler Wentworth measurement set

Total fabric width = 3"

Total fabric height = 6"

Total paper height needed to print = 6"

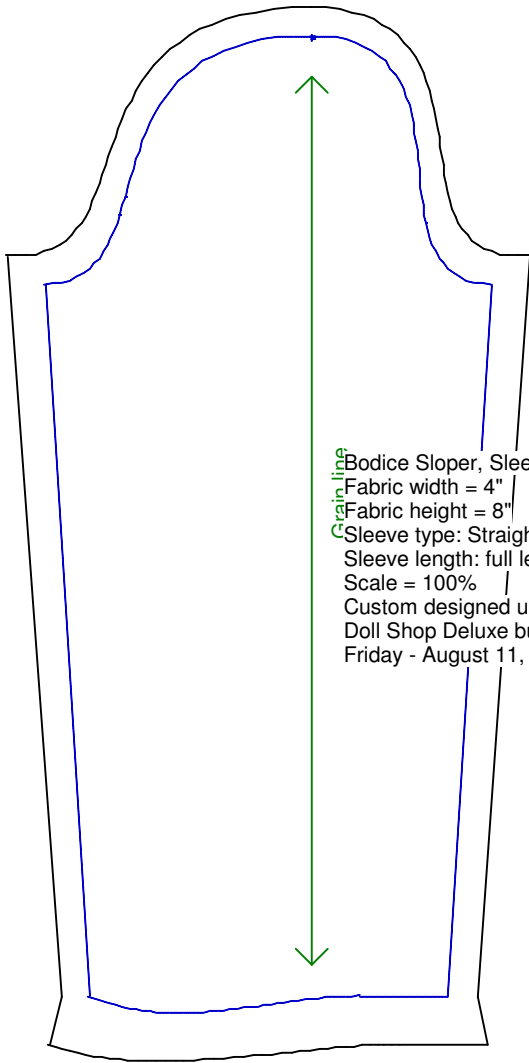
Neckline: jewel

Scale = 100%

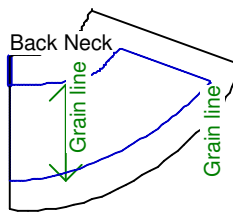
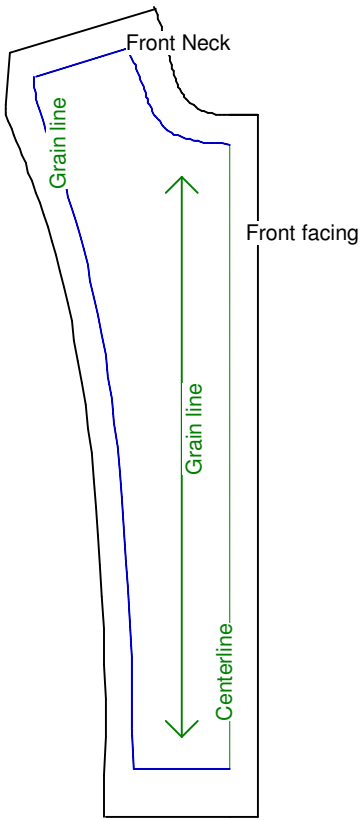
Using Doll Shop Deluxe

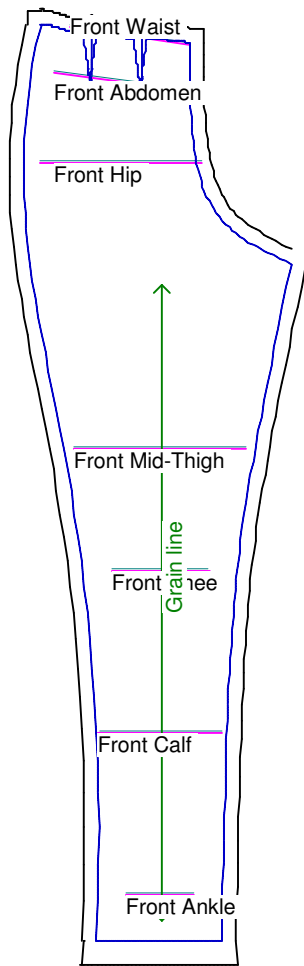
build 5.31 © 2005/2006 My Pattern Designer, LLC.

Friday - August 11, 2006 9:07:52



Bodice Sloper, Sleeve
Fabric width = 4"
Fabric height = 8"
Sleeve type: Straight No Dart
Sleeve length: full length
Scale = 100%
Custom designed using Tyler Wentworth
Doll Shop Deluxe build 5.31 © 2005/2006 My Pattern Designer, LLC.
Friday - August 11, 2006 9:07:52





Pants Sloper, Front Right

Custom designed using the Tyler Wentworth measurement set

Full length

Total fabric width = 5"

Total fabric height = 13"

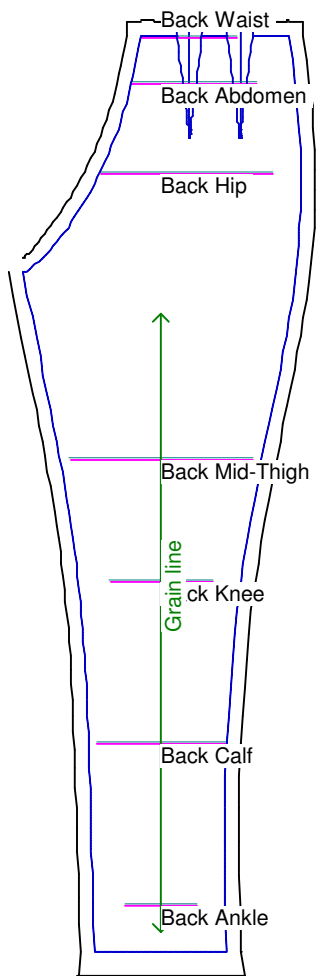
Total paper height needed to print = 13"

Scale = 50%

Using Doll Shop Deluxe

build 5.31 © 2005/2006 My Pattern Designer, LLC.

Friday - August 11, 2006 9:07:52



Pants Sloper, Back Right

Custom designed using the Tyler Wentworth measurement set

Full length

Total fabric width = 5"

Total fabric height = 13"

Total paper height needed to print = 13"

Scale = 50%

Using Doll Shop Deluxe

build 5.31 © 2005/2006 My Pattern Designer, LLC.

Friday - August 11, 2006 9:07:52

Waistband
Cut each on fold

