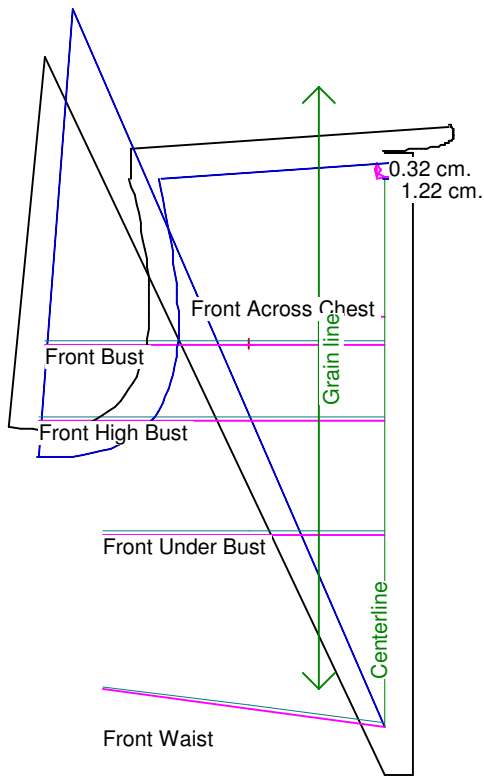


Neck Circumference	7	Shoulder Length	3.5
Shoulder Slope Front	10	Shoulder Slope Back	9
Across Shoulder Front	6	Across Shoulder Back	6
Across Chest	5.2	Across Back	6
Full Length Front	7.5	Full Length Back	7.5
Center Length Front	12	Center Length Back	12
Bust Front	9	Bust Back	7.5
Bust Depth	2.5	High Bust	9.2
Bust Radius	1.5	Under Bust Front	7.5
Bust Span	3.6	Side Length	5.5
Waist Front	7.5	Waist Back	7
High Waist Front	7.3	High Waist Back	6.5
High Waist Offset	1.5	Body Depth	4.6
Dress Waist Offset	1.27	Dart Center Offset	0
Armhole Depth	3.2	Overarm Length	14
Bicep	6	Elbow Bent	5.2
Wrist	4.5	Around Hand	6.7
Abdomen Depth	3	Elbow Depth	7
Abdomen Front	7.5	Abdomen Back	6.7
Hip Front	9.6	Hip Back	9.4
Crotch Length Front	6.3	Crotch Length Back	7.3
Inseam	20.5	Floor to Waist Side	26.2
Floor to Waist Front (conformed)	26.2	Floor to Waist Back (conformed)	27
Floor to Waist Front (straight)	25.7	Floor to Waist Back (straight)	26.7
Floor to Hip	23.7	Floor to Knee	12.4
Floor to Ankle	2.4	Knee Straight	8
Upper Thigh	11.5	Mid Thigh	10.5
Calf	8.4	Ankle	6.5
Ankle/Heel	8	Height	43
Around Head	17	Last saved on:	October 5 of 2006



Bodice Sloper, Front Right

NOTE: Cut 2 fronts and leave front opening unstitched to be pinned closed.

Custom designed using the unosist measurement set

Total fabric width = 8 cm.

Total fabric height = 13 cm.

Total paper height needed to print = 13 cm.

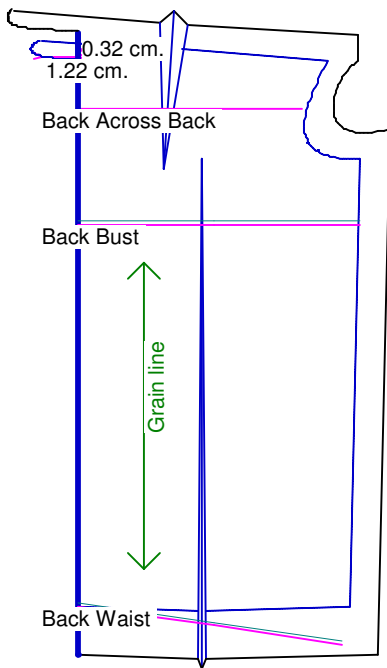
Neckline: jewel

Scale = 100%

Using Doll Shop Deluxe

build 5.31 © 2005/2006 My Pattern Designer, LLC.

Thursday - October 5, 2006 7:57:07



Bodice Sloper, Back Right

Custom designed using the unosist measurement set

Total fabric width = 7 cm.

Total fabric height = 11 cm.

Total paper height needed to print = 12 cm.

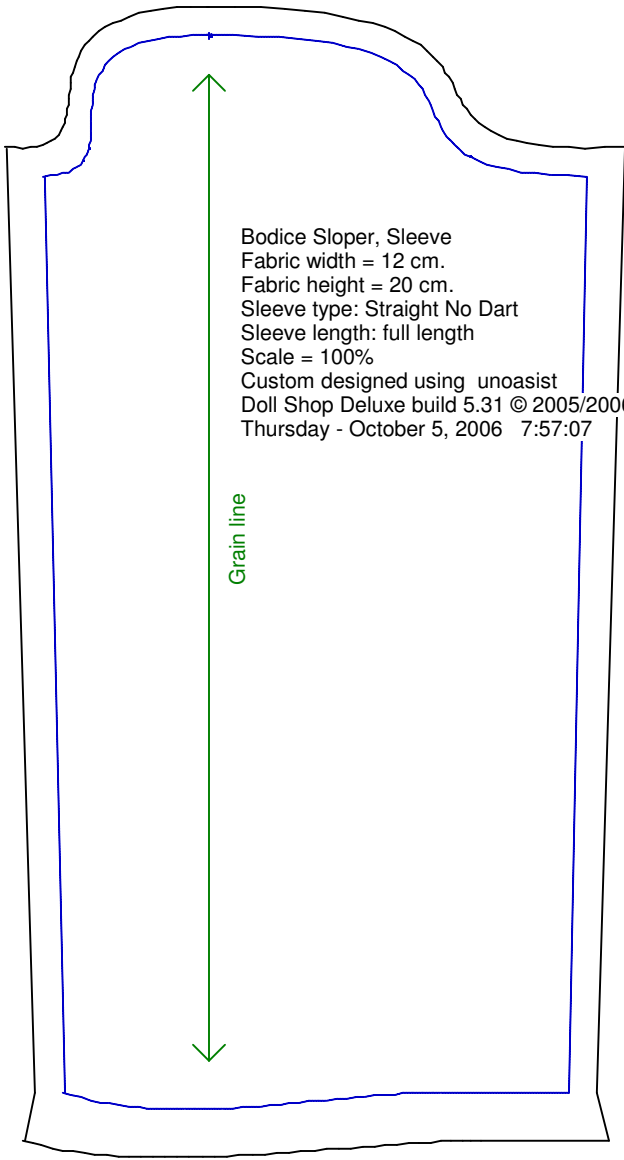
Neckline: jewel

Scale = 100%

Using Doll Shop Deluxe

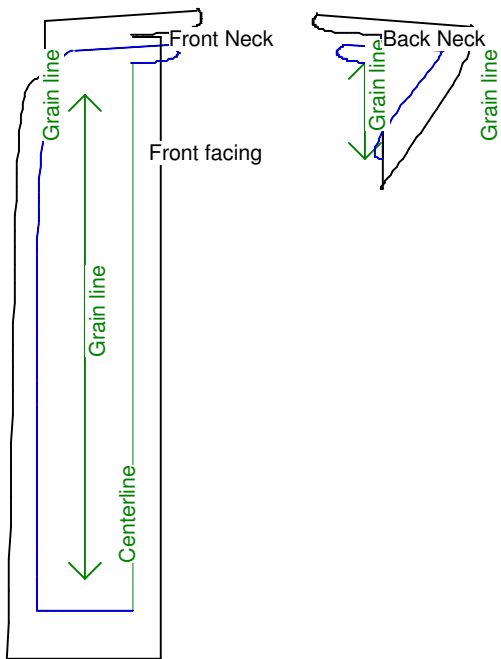
build 5.31 © 2005/2006 My Pattern Designer, LLC.

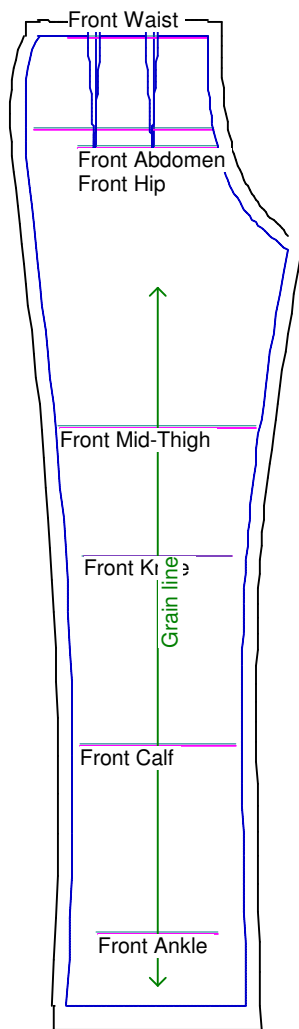
Thursday - October 5, 2006 7:57:07



Bodice Sloper, Sleeve
Fabric width = 12 cm.
Fabric height = 20 cm.
Sleeve type: Straight No Dart
Sleeve length: full length
Scale = 100%
Custom designed using unoasist
Doll Shop Deluxe build 5.31 © 2005/2006 My Pattern Designer, LLC.
Thursday - October 5, 2006 7:57:07

Grain line





Pants Sloper, Front Right

Custom designed using the unosist measurement set

Full length

Total fabric width = 11 cm.

Total fabric height = 34 cm.

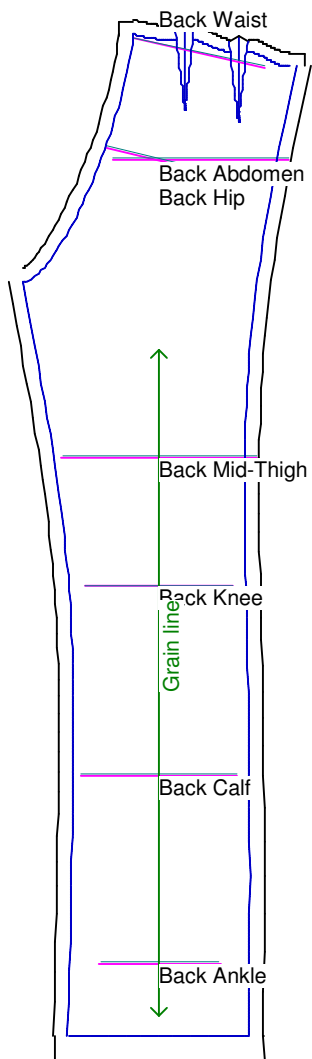
Total paper height needed to print = 34 cm.

Scale = 50%

Using Doll Shop Deluxe

build 5.31 © 2005/2006 My Pattern Designer, LLC.

Thursday - October 5, 2006 7:57:07



Pants Sloper, Back Right

Custom designed using the unosist measurement set

Full length

Total fabric width = 10 cm.

Total fabric height = 35 cm.

Total paper height needed to print = 35 cm.

Scale = 50%

Using Doll Shop Deluxe

build 5.31 © 2005/2006 My Pattern Designer, LLC.

Thursday - October 5, 2006 7:57:07

Waistband
Cut each on fold

