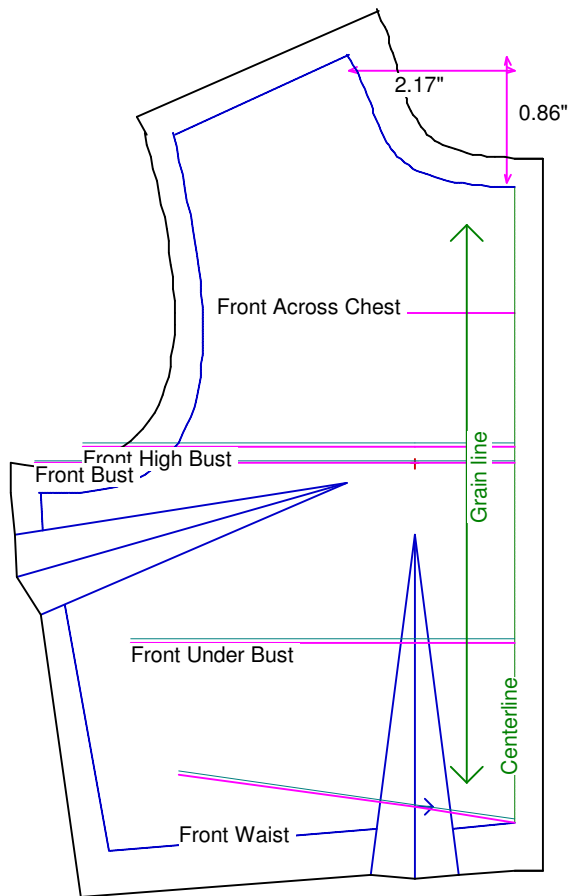


Neck Circumference	4 1/2	Shoulder Length	1
Shoulder Slope Front	4	Shoulder Slope Back	3 5/8
Across Shoulder Front	3 9/16	Across Shoulder Back	3 3/4
Across Chest	3 1/8	Across Back	3 1/4
Full Length Front	4	Full Length Back	3 5/8
Center Length Front	3 5/16	Center Length Back	3 1/4
Bust Front	5	Bust Back	3 3/4
Bust Depth	2 1/8	High Bust	4 1/2
Bust Radius	3/4	Under Bust Front	4
Bust Span	1 1/16	Side Length	1 3/4
Waist Front	3 1/2	Waist Back	3 1/16
High Waist Front	3 1/2	High Waist Back	3 1/16
High Waist Offset	1/2	Body Depth	3 13/16
Dress Waist Offset	0	Dart Center Offset	0
Armhole Depth	1 5/8	Overarm Length	6
Bicep	3 1/2	Elbow Bent	3 1/16
Wrist	2 1/16	Around Hand	2 11/16
Abdomen Depth	1/2	Elbow Depth	3 5/16
Abdomen Front	3 1/2	Abdomen Back	3 1/2
Hip Front	3 3/4	Hip Back	4 1/2
Crotch Length Front	3 3/4	Crotch Length Back	4 7/8
Inseam	8 7/16	Floor to Waist Side	11 3/4
Floor to Waist Front (conformed)	11 1/2	Floor to Waist Back (conformed)	11 11/16
Floor to Waist Front (straight)	11 1/2	Floor to Waist Back (straight)	11 11/16
Floor to Hip	10 1/4	Floor to Knee	5
Floor to Ankle	1	Knee Straight	3 3/4
Upper Thigh	5	Mid Thigh	5
Calf	4	Ankle	2 3/8
Ankle/Heel	3	Height	20
Around Head	10 1/4	Last saved on:	August 11 of 2006



Bodice Sloper, Front Right

NOTE: Cut 2 fronts and leave front opening unstitched to be pinned closed.

Custom designed using the Vintage Cissy measurement set

Total fabric width = 4"

Total fabric height = 6"

Total paper height needed to print = 6"

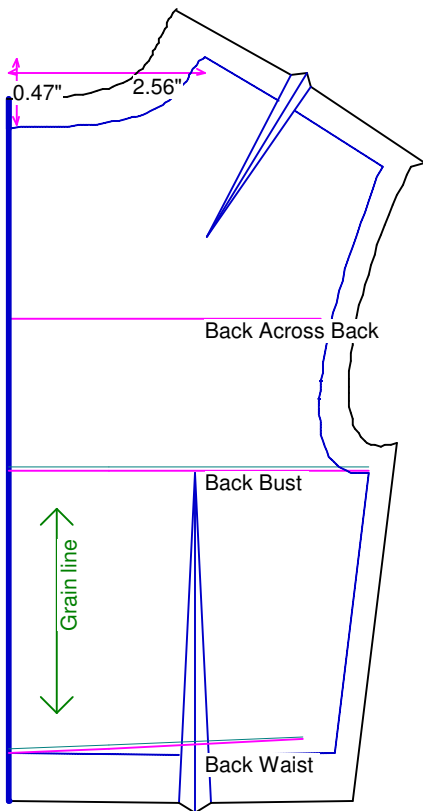
Neckline: jewel

Scale = 100%

Using Doll Shop Deluxe

build 5.31 © 2005/2006 My Pattern Designer, LLC.

Friday - August 11, 2006 8:36:55



Bodice Sloper, Back Right

Custom designed using the Vintage Cissy measurement set

Total fabric width = 3"

Total fabric height = 6"

Total paper height needed to print = 6"

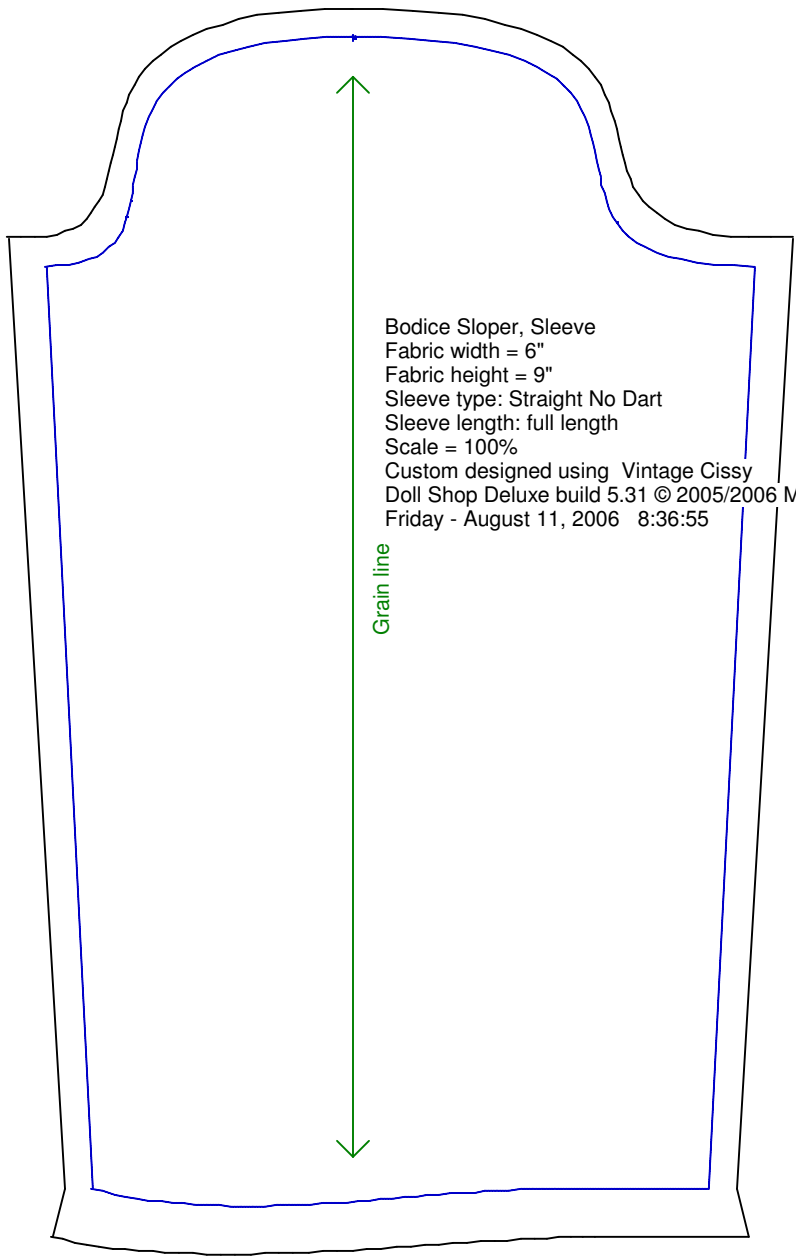
Neckline: jewel

Scale = 100%

Using Doll Shop Deluxe

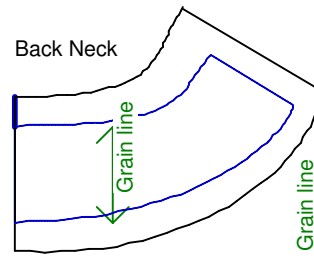
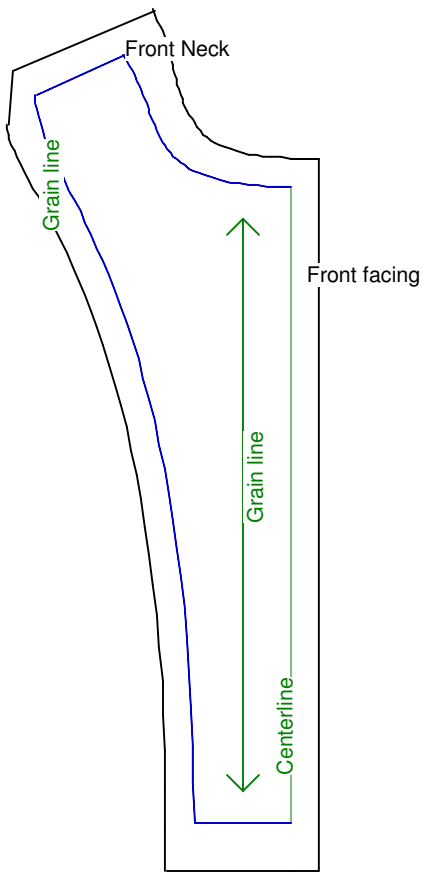
build 5.31 © 2005/2006 My Pattern Designer, LLC.

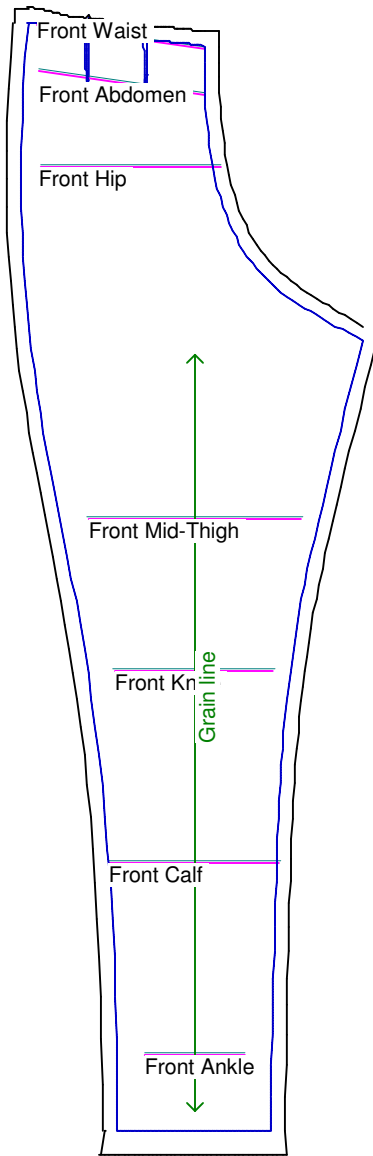
Friday - August 11, 2006 8:36:55



Bodice Sloper, Sleeve
Fabric width = 6"
Fabric height = 9"
Sleeve type: Straight No Dart
Sleeve length: full length
Scale = 100%
Custom designed using Vintage Cissy
Doll Shop Deluxe build 5.31 © 2005/2006 My Pattern Designer, LLC.
Friday - August 11, 2006 8:36:55

Grain line





Pants Sloper, Front Right

Custom designed using the Vintage Cissy measurement set

Full length

Total fabric width = 6"

Total fabric height = 15"

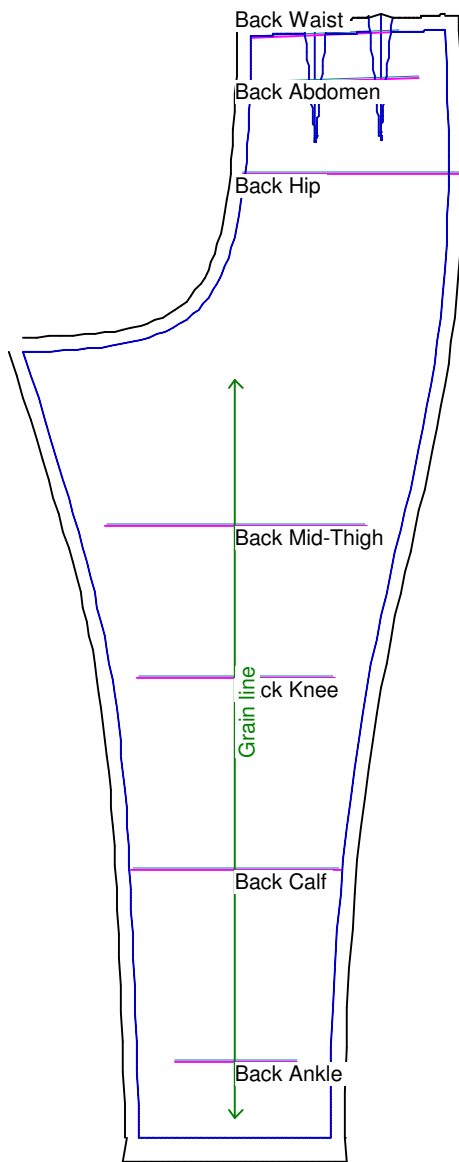
Total paper height needed to print = 15"

Scale = 50%

Using Doll Shop Deluxe

build 5.31 © 2005/2006 My Pattern Designer, LLC.

Friday - August 11, 2006 8:36:55



Pants Sloper, Back Right

Custom designed using the Vintage Cissy measurement set

Full length

Total fabric width = 7"

Total fabric height = 15"

Total paper height needed to print = 16"

Scale = 50%

Using Doll Shop Deluxe

build 5.31 © 2005/2006 My Pattern Designer, LLC.

Friday - August 11, 2006 8:36:55

Waistband
Cut each on fold

